

SKB

SECURITY DIVISION SYSTEM



VIDEO SURVEILLANCE & ACCESSORIES

67/2022



INDEX

5M XVR	PAG 4
4K XVR	PAG 6
4K POE NVR	PAG 12
AHD BULLET CAMERAS.....	PAG 18
AHD DOME CAMERAS	PAG 24
AHD BULLET FULL COLOR CAMERAS.....	PAG 30
AHD DOME FULL COLOR CAMERAS	PAG 36
POE BULLET IP CAMERAS	PAG 39
POE DOME IP CAMERAS	PAG 44
IP CAMERAS POE BULLET FULL COLOR	PAG 48
IP CAMERAS POE DOME FULL COLOR	PAG 52
ACCESSORIES	PAG 56
POWER SUPPLIES	PAG 58
ADAPTERS.....	PAG 60
CONNECTORS.....	PAG 62
CABLES	PAG 63
NETWORKING	PAG 66
INSTRUMENTS	PAG 68
UPS	PAG 70
MONITOR	PAG 72
RACK	PAG 72
HDMI ACCESSORIES.....	PAG 74

XVR 4 CHANNELS 5M AHD 5 IN 1

Hybrid XVR HD, 4 analog channels (BNC) video recorder with 4in1 function or 16 IP digital channels with maximum resolution 5MPx. XVR can be controlled by CMS software or P2P XMeye App. Supports AHD-TVI-CVI-CVBS input signals with resolutions 5MP-N (2560x1920) @ 12fps, 1080p (1920 * 1080) @ 15fps, CVBS (960x560) @ 25fps.

Thanks to embedded Onvif standard, you can link IP cameras (SKB or Onvif compatible).

Device can record on a 3.5" HDD (max 8TB, not included) continuously H24, on motion detection or on schedule. Encoding standard H.265 makes possible to acquire high quality images while taking up less storage space.

Thanks to the P2P XMeye App it is possible to see the live cameras and the playback of the videos stored in the HDD. The operating system has been developed for easy interpretation and is equipped with smart functions such as XVI control, PTZ, privacy mask, trigger alarm and OSD adjustments.



HybridXVR HD



Code	67.3800.04
Typology	XVR
Channels	4
Video inputs	4 BNC
Video outputs	1x HDMI / 1x VGA
Audio inputs	1x RCA
Audio outputs	1x RCA
Video streams	Main Stream, Sub Stream
Supported video inputs max	5M
Frame Rate max	25fps
Screen Resolution Max	1920x1080pixel
Registration mode	Continuous, Programmed, Motion
Video encoding	H.264 / H.265
Playback resolution	5M-N@12fps
Network protocols	TCP/IP, DHCP, DDNS, DNS, PPPoE, UPNP, NTP, SMTP
Cloud	Xmeye
Notifications	Push
Onvif	2.4
Supported browsers	Chrome, I-Explorer, Firefox, Safari
CMS	Yes
Memory	3,5" HDD max. 8TB
Backup	USB / APP
Power supply	12Vdc - 2A
Interfaces	2 x USB 2.0 / 1x LAN RJ45
Operating temperature	0°C ~ 55°C
Dimensions	210x200x45mm
Weight	0.7Kg

CPU	NT98321
Operating system	Linux embedded
Encoding resolution	Max 5M-N
Recording frame rate	4*5M-N@12fps 4*4M-N@15fps 4*1080P@15fps 4*CVBS @25fps
IP channels	NVR mode: - 16CH IP 5M - 16CH IP 1080p HYBRID way: - 2CH IP 1080p + 4CH AHD
Additional functions	Privacy mask, PTZ control, Image adjustments, XVI control, Face detection

smartphone view



8 023389 527052

Master Carton
Quantity: 10 pcs

XVR 8 CHANNELS 5M AHD 5 IN 1

Hybrid XVR HD, 8 analog channels (BNC) video recorder with 4in1 function or 16 IP digital channels with maximum resolution 5MPx. XVR can be controlled by CMS software or P2P XMeye App. Supports AHD-TVI-CVI-CVBS input signals with resolutions 5MP-N (2560x1920) @ 12fps, 1080p (1920 * 1080) @ 15fps, CVBS (960x560) @ 25fps.

Thanks to embedded Onvif standard, you can link IP cameras (SKB or Onvif compatible).

Device can record on a 3.5" HDD (max 8TB, not included) continuously H24, on motion detection or on schedule. Encoding standard H.265 makes possible to acquire high quality images while taking up less storage space.

Thanks to the P2P XMeye App it is possible to see the live cameras and the playback of the videos stored in the HDD. The operating system has been developed for easy interpretation and is equipped with smart functions such as XVI control, PTZ, privacy mask, trigger alarm and OSD adjustments.



HybridXVR HD



Code	67.3800.13
Typology	XVR
Channels	8
Video inputs	8 BNC
Video outputs	1x HDMI / 1x VGA
Audio inputs	1x RCA
Audio outputs	1x RCA
Video streams	Main Stream, Sub Stream
Supported video inputs max	5M
Frame Rate max	25fps
Screen Resolution Max	1920x1080pixel
Registration mode	Continuous, Programmed, Motion
Video encoding	H.264 / H.265
Playback resolution	5M-N@12fps
Network protocols	TCP/IP, DHCP, DDNS, DNS, PPPoE, UPNP, NTP, SMTP
Cloud	Xmeye
Notifications	Push
Onvif	2.4
Supported browsers	Chrome, I-Explorer, Firefox, Safari
CMS	Yes
Memory	3,5" HDD max. 8TB
Backup	USB / APP
Power supply	12Vdc - 2A
Interfaces	2 x USB 2.0 / 1x LAN RJ45
Operating temperature	0°C ~ 55°C
Dimensions	210x200x45mm
Weight	0.7Kg

CPU	NT98321
Operating system	Linux embedded
Encoding resolution	Max 5M-N
Recording frame rate	8*5M-N@12fps 8*4M-N@15fps 8*1080P@15fps 8*CVBS @25fps
IP channels	NVR mode: - 8CH IP 5M - 16CH IP 1080P HYBRID way: - 4CH IP 1080p + 8CH AHD
Additional functions	Privacy mask, PTZ control, Image adjustments, XVI control, Face detection

smartphone view



8 023389 481682

Master Carton
Quantity: 10 pcs

XVR 4 CHANNELS 4K REAL AHD 5 IN 1

HybridXVR 4K, 4 analog channels (BNC) video recorder with 4in1 function and up to 16 IP digital channels(NVR mode) with maximum resolution 4K - 8MP. XVR can be manage by CMS software or P2P XMeye PRO App. Supports AHD-TVI-CVI-CVBS input signals with resolutions 8MP @15fps,5MP @20fps,4MP,1080p e 960H. Thanks to embedded Onvif standard, you can link IP cameras (SKB or Onvif compatible).

Device can record on a 3.5" HDD (max 8TB, not included) continuously H24/7, on motion detection or on schedule. Encoding standard H.265 makes possible to acquire high quality images while taking up less storage space.

Thanks to the P2P XMeye PRO App it is possible to see the live cameras and the playback of videos stored in the HDD. The operating system has been developed for easy interpretation and is equipped with smart functions such as XVI control, PTZ, privacy mask, trigger alarm and OSD adjustments. The auto-maintain feature allows you to set an automatic reboot and the self deleting file videos.



HybridXVR 4K



Code	67.3810.04
Typology	XVR
Channels	4
Video inputs	4 BNC
Video outputs	1x HDMI / 1x VGA
Audio inputs	1x RCA
Audio outputs	1x RCA
Video streams	Main Stream, Sub Stream
Supported video inputs max	8M
Frame Rate max	15fps
Screen Resolution Max	(4K) 3840x2160pixel
Registration mode	Continues, Scheduled, Motion
Video encoding	H.265+
Playback resolution	4K-8M@9fps
Network protocols	TCP/IP, DHCP, DNS, UPNP, NTP, SMTP
Cloud	Xmeye PRO
Notifications	Push
Onvif	2.4
Supported browsers	I.E. 8
CMS	Yes
Memory	3,5" HDD max. 8TB
Backup	USB / APP
Power supply	12Vdc - 2A
Interfaces	2 x USB 2.0 / 1x LAN RJ45
Operating temperature	0°C ~ 50°C
Dimensions	255x215x44mm
Weight	0.66Kg

CPU	NT98321
Operating system	Linux embedded
Encoding resolution	Max 4K 8M
Recording frame rate	4*8M@9fps Real 4K 4*5M@16fps 4*4M@21fps
IP channels	NVR mode: - 8CH IP 5M - 16CH IP 1080p HYBRID way: - 4CH IP 4K + 4CH AHD
Additional functions	Face detection, Privacy mask, PTZ control, Image adjustments, Control XVI

smartphone view



8 023389 766550

Master Carton
Quantity: 10 pcs

XVR 8 CHANNELS 4K REAL AHD 5 IN 1

HybridXVR 4K, 8 analog channels (BNC) video recorder with 4in1 function and up to 16 IP digital channels(NVR mode) with maximum resolution 4K - 8MP. XVR can be manage by CMS software or P2P XMeye PRO App. Supports AHD-TVI-CVI-CVBS input signals with resolutions 8MP @15fps,5MP @20fps,4MP,1080p e 960H. Thanks to embedded Onvif standard, you can link IP cameras (SKB or Onvif compatible).

Device can record on a 3.5" HDD (max 8TB, not included) continuously H24/7, on motion detection or on schedule. Encoding standard H.265 makes possible to acquire high quality images while taking up less storage space.

Thanks to the P2P XMeye PRO App it is possible to see the live cameras and the playback of videos stored in the HDD. The operating system has been developed for easy interpretation and is equipped with smart functions such as XVI control, PTZ, privacy mask, trigger alarm and OSD adjustments. The auto-maintain feature allows you to set an automatic reboot and the self deleting file videos.

HybridXVR 4K

8^{CH} DVR HD | 16^{CH} NVR IP HD | SATA HDD max 8TB | CLOUD P2P | COMPATIBLE ONVIF



Code	67.3810.05
Typology	XVR
Channels	8
Video inputs	8 BNC
Video outputs	1x HDMI / 1x VGA
Audio inputs	2X RCA
Audio outputs	2X RCA
Video streams	Main Stream, Sub Stream
Supported video inputs max	8M
Frame Rate max	15fps
Screen Resolution Max	(4K) 3840x2160pixel
Registration mode	Continues, Scheduled, Motion
Video encoding	H.265+
Playback resolution	4K-8M@8fps
Network protocols	TCP/IP, DHCP, DNS, UPNP, NTP, SMTP
Cloud	Xmeye PRO
Notifications	Push
Onvif	2.4
Supported browsers	I.E. 8
CMS	Yes
Memory	3,5" HDD max. 8TB
Backup	USB / APP
Power supply	12Vdc - 2A
Interfaces	2 x USB 2.0 / 1x LAN RJ45 / RS485
Operating temperature	0°C ~ 50°C
Dimensions	255x235x44mm
Weight	0,8Kg

CPU	NT98323
Operating system	Linux embedded
Encoding resolution	Max 4K 8M
Recording frame rate	8*8M@8fps Real 4K 8*5M@14fps 8*4M@18fps
IP channels	NVR mode: - 16CH IP 5M - 16CH IP 4K HYBRID way: - 8CH IP 4K + 8CH AHD
Additional functions	Face detection, Privacy mask, PTZ control, Image adjustments, Control XVI

smartphone view



8 023389 766567

Master Carton
Quantity: 10 pcs

XVR 4 CHANNELS 4K-N AHD 5 IN 1

HybridXVR 4K-N, 4 analog channels (BNC) video recorder with 4in1 function and up to 16 IP digital channels(NVR mode) with maximum resolution 4K - 8MP. XVR can be manage by CMS software or P2P XMeye PRO App. Supports AHD-TVI-CVI-CVBS input signals with resolutions 8MP @15fps,5MP @12fps,4MP,1080p e 960H. Thanks to embedded Onvif standard, you can link IP cameras (SKB or Onvif compatible).

Device can record on a 3.5" HDD (max 8TB, not included) continuously H24/7, on motion detection or on schedule. Encoding standard H.265 makes possible to acquire high quality images while taking up less storage space.

Thanks to the P2P XMeye PRO App it is possible to see the live cameras and the playback of videos stored in the HDD. The operating system has been developed for easy interpretation and is equipped with smart functions such as XVI control, PTZ, privacy mask, trigger alarm and OSD adjustments. The auto-maintain feature allows you to set an automatic reboot and the self deleting file videos.



HybridXVR 4K-N

4^{CH} DVR HD | 16^{CH} NVR IP HD | SATA HDD max 8TB | CLOUD P2P | COMPATIBLE ONVIF



Code	67.3810.00
Typology	XVR
Channels	4
Video inputs	4 BNC
Video outputs	1x HDMI / 1x VGA
Audio inputs	1x RCA
Audio outputs	1x RCA
Video streams	Main Stream, Sub Stream
Supported video inputs max	8M
Frame Rate max	12fps
Screen Resolution Max	(4K) 3840x2160pixel
Registration mode	Continues, Scheduled, Motion
Video encoding	H.265
Playback resolution	4K-N 8M@12fps
Network protocols	TCP/IP, DHCP, DNS, UPNP, NTP, SMTP
Cloud	Xmeye PRO
Notifications	Push
Onvif	2.4
Supported browsers	I.E. 8
CMS	Yes
Memory	3,5" HDD max. 8TB
Backup	USB / APP
Power supply	12Vdc - 2A
Interfaces	2 x USB 2.0 / 1x LAN RJ45
Operating temperature	0°C ~ 50°C
Dimensions	255x215x44mm
Weight	0.66Kg

CPU	NT98321
Operating system	Linux embedded
Encoding resolution	Max 4K-N 8M
Recording frame rate	4*4K-N@12fps 4*5M@12fps 4*4M@15fps
IP channels	NVR mode: - 8CH IP 5M - 16CH IP 1080p HYBRID way: - 4CH IP 5M + 4CH AHD
Additional functions	Face detection, Privacy mask, PTZ control, Image adjustments, Control XVI

smartphone view



8 023389 765980

Master Carton
Quantity: 10 pcs

XVR 8 CHANNELS 4K-N AHD 5 IN 1

HybridXVR 4K-N, 8 analog channels (BNC) video recorder with 4in1 function and up to 16 IP digital channels(NVR mode) with maximum resolution 4K - 8MP. XVR can be manage by CMS software or P2P XMeye PRO App. Supports AHD-TVI-CVI-CVBS input signals with resolutions 8MP @15fps,5MP @12fps,4MP,1080p e 960H. Thanks to embedded Onvif standard, you can link IP cameras (SKB or Onvif compatible).

Device can record on a 3.5" HDD (max 8TB, not included) continuously H24/7, on motion detection or on schedule. Encoding standard H.265 makes possible to acquire high quality images while taking up less storage space.

Thanks to the P2P XMeye PRO App it is possible to see the live cameras and the playback of videos stored in the HDD. The operating system has been developed for easy interpretation and is equipped with smart functions such as XVI control, PTZ, privacy mask, trigger alarm and OSD adjustments. The auto-maintain feature allows you to set an automatic reboot and the self deleting file videos.

HybridXVR 4K-N

8^{CH} DVR HD | 16^{CH} NVR IP HD | SATA HDD max 8TB | CLOUD P2P | COMPATIBLE ONVIF



Code	67.3810.01
Typology	XVR
Channels	8
Video inputs	8 BNC
Video outputs	1x HDMI / 1x VGA
Audio inputs	1x RCA
Audio outputs	1x RCA
Video streams	Main Stream, Sub Stream
Supported video inputs max	8M
Frame Rate max	15fps
Screen Resolution Max	(4K) 3840x2160pixel
Registration mode	Continues, Scheduled, Motion
Video encoding	H.265
Playback resolution	4K-N 8M@9fps
Network protocols	TCP/IP, DHCP, DNS, UPNP, NTP, SMTP
Cloud	Xmeye PRO
Notifications	Push
Onvif	2.4
Supported browsers	I.E. 8
CMS	Yes
Memory	3,5" HDD max. 8TB
Backup	USB / APP
Power supply	12Vdc - 2A
Interfaces	2 x USB 2.0 / 1x LAN RJ45
Operating temperature	0°C ~ 50°C
Dimensions	255x215x44mm
Weight	0,8Kg

CPU	NT98323
Operating system	Linux embedded
Encoding resolution	Max 4K-N 8M
Recording frame rate	8*4K-N@9fps 8*5M@8fps 8*4M@10fps
IP channels	NVR mode: - 8CH IP 5M - 16CH IP 1080p HYBRID way: - 4CH IP 5M + 8CH AHD
Additional functions	Face detection, Privacy mask, PTZ control, Image adjustments, Control XVI

smartphone view



8 023389 765997

Master Carton
Quantity: 10 pcs

XVR 16 CHANNELS 4K-N AHD 5 IN 1

HybridXVR 4K-N, 16 analog channels (BNC) video recorder with 4in1 function and up to 16 IP digital channels(NVR mode) with maximum resolution 4K - 8MP. XVR can be manage by CMS software or P2P XMeye PRO App. Supports AHD-TVI-CVI-CVBS input signals with resolutions 88MP @12fps,5MP @12.5fpss,4MP,1080p and 960H. Thanks to embedded Onvif standard, you can link IP cameras (SKB or Onvif compatible).

Device can record on a 3.5" HDD (max 8TB, not included) continuously H24/7, on motion detection or on schedule. Encoding standard H.265 makes possible to acquire high quality images while taking up less storage space.

Thanks to the P2P XMeye PRO App it is possible to see the live cameras and the playback of videos stored in the HDD. The operating system has been developed for easy interpretation and is equipped with smart functions such as XVI control, PTZ, privacy mask, trigger alarm and OSD adjustments. The auto-maintain feature allows you to set an automatic reboot and the self deleting file videos.



HybridXVR 4K-N

16^{CH} DVR HD | 16^{CH} NVR IP HD | SATA HDD max 8TB | CLOUD P2P | COMPATIBLE ONVIF



Code	67.3810.02
Typology	XVR
Channels	16
Video inputs	16 BNC
Video outputs	1x HDMI / 1x VGA
Audio inputs	1x RCA
Audio outputs	1x RCA
Video streams	Main Stream, Sub Stream
Supported video inputs max	8M
Frame Rate max	12fps
Screen Resolution Max	(4K) 3840x2160pixel
Registration mode	Continues, Scheduled, Motion
Video encoding	H.265
Playback resolution	4K-N 8M@6fps
Network protocols	TCP/IP, DHCP, DNS, UPNP, NTP, SMTP
Cloud	Xmeye PRO
Notifications	Push
Onvif	2.4
Supported browsers	I.E. 8
CMS	Yes
Memory	3,5" HDD max. 8TB
Backup	USB / APP
Power supply	12Vdc - 2A
Interfaces	2 x USB 2.0 / 1x LAN RJ45 / RS485
Operating temperature	0°C ~ 50°C
Dimensions	255x235x44mm
Weight	0,8Kg

CPU	NT98336
Operating system	Linux embedded
Encoding resolution	Max 4K-N 8M
Recording frame rate	16*4K-N@6fps 16*5M@6fps 16*4M@9fps
IP channels	NVR mode: - 16CH IP 5M - 16CH IP 4K HYBRID way: - 16CH IP 4K + 16CH AHD
Additional functions	Face detection, Privacy mask, PTZ control, Image adjustments, Control XVI

smartphone view



8 023389 766000

Master Carton
Quantity: 10 pcs

XVR OR NVR: WHICH ONE TO CHOOSE?

In the world of videosurveillance **XVRs** and **NVRs** are the **heart** of the security system, as they are responsible for monitoring, collecting video data from cameras and then storing them.

XVR

They are the technological evolution of DVRs (digital video recorders); born to combine several transmission technologies in one; in fact, the XVRs allow you to connect **different types of cameras: AHD-TVI-CVI-CVBS** and even **IP cameras with ONVIF protocol** (installed in the same network as the XVR through Switch or Router).

This **allows you to use analog and digital technologies on a single XVR device, making them perfect for both new systems and for replacing obsolete equipment** in existing systems using Standard video cables and BNC connectors located on the back of the XVR.

Our range of XVRs consists of different types of recorders, in particular we find the **HD HybridXVRs** which are an excellent **semi-professional solution** that allows you to reach **resolutions up to 5M-N**; then there are the **4K-N HybridXVRs** suitable for **professional use and up to 4K-N resolutions**; finally we find the **TOP of the range the HybridXVR 4K** which have **REAL 4K resolution**.

What does the “-N” mean immediately after resolution? Taking the 4K-N version as an example, we can say that the image quality is high as the vertical pixels remain the same as the real 4K resolution; while the horizontal pixels are cut in half. This results in excellent image quality with less video coding effort and less storage space on the HDD.

NVR

They are the most modern recording systems, which use the local LAN to communicate with the installed cameras; **obviously they are all based on IP technology, with resolutions up to 4K**.

The connection of the NVR systems can take place in a decentralized way (switch or access point) and they also enjoy high security of the video signal, as the cameras require access credentials in order to be combined with the NVR, otherwise it is not possible to view them. **The NVR systems are based on the “Onvif” IP video standard**, allowing you to connect cameras from different manufacturers even in WI-FI.

In particular, **our NVRs have POE inputs** that allow you to simplify the connection and reduce the use of cables, **as they transmit the video signal through the LAN network cable and also allow you to power the cameras** if connected directly or through the POE Switch.

The advantages of NVR systems are certainly in **the ease of installation on large and long-distance environments**, especially in new buildings where the system has yet to be created. In addition, **the NVR systems** are able to reach very high resolutions in fact it is normal to be able to **connect 4K 8Mpx cameras** with over 20fps in recording that **guarantee sharpness and fluidity of the recorded images**.



NVR 4CH POE 4K

IP POE NVR, 9 digital channels video recorder, video resolution up to 4K, 4 POE ports, Onvif compatible and also controlled by CMS software and App P2P Bitvision.

Embedded POE ports allows to power supply and get video image from cameras without any other cable or switch. NVR record videos on 3,5" HDD (Max. 8TB not included) by continuous mode H24, motion detection or scheduling.

Thanks to encoding standard H.265+, images will be better with less storage. NVR can be controlled from PC by web interface or CMS software and P2P function allows remote control with your smartphone.

The operative system is made to be user friendly and has smart functions as PTZ Control, Privacy mask, trigger alarm and OSD regulation.



NVR PoE 4K

4 ^{CH} NVR PoE	9 ^{CH} NVR IP	SATA HDD max 8TB	CLOUD P2P	COMPATIBLE ONVIF
--------------------------------------	-------------------------------------	----------------------------	------------------	----------------------------



Code	67.3811.50
Typology	NVR POE
Channels	9
Video inputs	4 RJ45
Video outputs	1x HDMI / 1x VGA
Audio inputs	1x RCA
Audio outputs	1x RCA
Video streams	Main Stream, Sub Stream
Supported video inputs max	8M
Frame Rate max	30fps
Risoluzione max video uscita	(4K) 3840x2160pixel
Registration mode	Continuous, Programmed, Motion
Video encoding	H.265+
Playback resolution	4K@30fps
Network protocols	TCP/IP, DHCP, DDNS, RTSP, P2P
Cloud	Bitvision
Notifications	Push
Onvif	2.4 S/T
Supported browsers	Edge, Chrome, Safari, Firefox
CMS	Yes
Memory	3,5" HDD max. 8TB
Backup	USB / APP
Power supply	52Vdc - 1,25A
Interfaces	2 x USB 2.0 / 1x LAN RJ45
Operating temperature	-10°C ~ +55°C
Dimensions	260 x 215 x 43mm
Weight	1,5Kg

CPU	ARM Cortex A7
Operating system	Linux embedded
Resolution supported	4k(3840x2160), 5M(2592 x1944), 4M(2688x1520/2560x1440), 3M(2048x1536), 1080P(1920x1080)
Recording frame rate	8*4K@25fps 9*5M@25fps 9*4M@25fps 9*3M@25fps 9*1080P@25fps
POE	4x IEEE 802.3af
POE Specifications	- 4 x 100Mbps - Standard 15W AF output (single port) - Total power ≥50W - Max. Length of ETH cable 200m
Additional functions	Privacy mask, PTZ control, Image adjustments, AI detection

smartphone view



8 023389 764105

Master Carton
Quantity: 10 pcs

NVR 8CH POE 4K

IP POE NVR, 16 digital channels video recorder, video resolution up to 4K, 8 POE port, Onvif compatible and also controlled by CMS software and App P2P Bitvision.

Embedded POE ports allows to power supply and get video image from cameras without any other cable or switch. NVR record videos on 3,5" HDD (Max. 8TB not included) by continuous mode H24, motion detection or scheduling.

Thanks to encoding standard H.265+, images will be better with less storage. NVR can be controlled from PC by web interface or CMS software and P2P function allows remote control with your smartphone.

The operative system is made to be user friendly and has smart functions as PTZ Control, Privacy mask, trigger alarm and OSD regulation.



NVR PoE 4K

8^{CH} NVR PoE | 16^{CH} NVR IP | SATA HDD max 8TB | CLOUD P2P | COMPATIBLE ONVIF



Code	67.3811.60
Typology	NVR POE
Channels	16
Video inputs	8 RJ45
Video outputs	1x HDMI / 1x VGA
Audio inputs	1x RCA
Audio outputs	1x RCA
Video streams	Main Stream, Sub Stream
Supported video inputs max	8M
Frame Rate max	30fps
Risoluzione max video uscita	(4K) 3840x2160pixel
Registration mode	Continuous, Programmed, Motion
Video encoding	H.265+
Playback resolution	4K@30fps

Network protocols	TCP/IP, DHCP, DDNS, RTSP, P2P
Cloud	Bitvision
Notifications	Push
Onvif	2.4 S/T
Supported browsers	Edge, Chrome, Safari, Firefox
CMS	Yes
Memory	3,5" HDD max. 8TB
Backup	USB / APP
Power supply	52Vdc - 2,5A
Interfaces	2 x USB 2.0 / 1x LAN RJ45
Operating temperature	-10°C ~ +55°C
Dimensions	260 x 215 x 43mm
Weight	1,7Kg

CPU	ARM Cortex A7
Operating system	Linux embedded
Resolution supported	4k(3840x2160), 5M(2592 x1944), 4M(2688x1520/2560x1440), 3M(2048x1536), 1080P(1920x1080)
Recording frame rate	10*4K@25fps 16*5M@25fps 16*4M@25fps 16*3M@25fps 16*1080P@25fps
POE	8x IEEE 802.3af
POE Specifications	- 8 x 100Mbps - Standard 15W AF output (single port) - Total power ≥100W - Max. Length of ETH cable 200m
Additional functions	Privacy mask, PTZ control, Image adjustments, AI detection

smartphone view



8 023389 764112

Master Carton
Quantity: 10 pcs

NVR 16CH POE 4K

IP POE NVR, 25 digital channels video recorder, video resolution up to 4K, 16 POE port, Onvif compatible and also controlled by CMS software and App P2P Bitvision.

Embedded POE ports allows to power supply and get video image from cameras without any other cable or switch. NVR record videos on 3,5" HDD (Max. 8TB not included) by continuous mode H24, motion detection or scheduling.

Thanks to encoding standard H.265+, images will be better with less storage. NVR can be controlled from PC by web interface or CMS software and P2P function allows remote control with your smartphone.

The operative system is made to be user friendly and has smart functions as PTZ Control, Privacy mask, trigger alarm and OSD regulation.



NVR PoE 4K

16 ^{CH} NVR PoE	25 ^{CH} NVR IP	SATA HDD max 8TB	CLOUD P2P	COMPATIBLE ONVIF
--------------------------	-------------------------	------------------	-----------	------------------



Code	67.3811.70
Typology	NVR POE
Channels	25
Video inputs	16 RJ45
Video outputs	1x HDMI / 1x VGA
Audio inputs	1x RCA
Audio outputs	1x RCA
Video streams	Main Stream, Sub Stream
Supported video inputs max	8M
Frame Rate max	30fps
Risoluzione max video uscita	(4K) 3840x2160pixel
Registration mode	Continuous, Programmed, Motion
Video encoding	H.265+
Playback resolution	4K@30fps
Network protocols	TCP/IP, DHCP, DDNS, RTSP, P2P
Cloud	Bitvision
Notifications	Push
Onvif	2.4 S/T
Supported browsers	Edge, Chrome, Safari, Firefox
CMS	Yes
Memory	3,5" HDD max. 8TB
Backup	USB / APP
Power supply	100 - 230 Vac
Interfaces	2 x USB 2.0 / 1x LAN RJ45
Operating temperature	-10°C ~ +55°C
Dimensions	310 x 295 x 46mm
Weight	2Kg

CPU	ARM Cortex A7
Operating system	Linux embedded
Resolution supported	4k(3840x2160), 5M(2592 x1944), 4M(2688x1520/2560x1440), 3M(2048x1536), 1080P(1920x1080)
Recording frame rate	10*4K@25fps 25*5M@25fps 25*4M@25fps 25*3M@25fps 25*1080P@25fps
POE	8x IEEE 802.3af
POE Specifications	- 16 x 100Mbps - Standard 15W AF output (single port) - Total power ≥100W - Max. Length of ETH cable 200m
Additional functions	Privacy mask, PTZ control, Image adjustments, AI detection

smartphone view



8 023389 766086

Master Carton
Quantity: 10 pcs



CAMERAS

BULLET - DOME
FULL COLOR NIGHT VISION

AHD (4 in 1)

Code	Typology	Sensor resolution	Video resolution pixel	Image Sensor	Optical Type	Optics	Night Vision	Starlight	Dimensions mm	Pag.
67.3786.10	Bullet	5M Lite	2592x1944	1/3" CMOS	fixed	2,8 mm	B/W	No	169,5x70x67,5	18
67.3786.10/F	Bullet	5M Lite	2592x1944	1/3" CMOS	fixed	2,8 mm	In color	No	169,5x70x67,5	30
67.3786.25/F	Bullet	5M Lite	2592x1944	1/2.8" Sony Starvis	fixed	2,8 mm	In color	Yes	169,5x70x67,5	31
67.3786.40	Bullet	5M Lite	2592x1944	1/3" CMOS	Varifocal	2,8-12 mm	B/W	No	211x92x90	22
67.3786.45/F	Bullet	5M Lite	2592x1944	1/2.8" Sony Starvis	Motorized AF	2,7-13,5 mm	In color	Yes	263x93x91	33
67.3786.20	Bullet	5M	3840x2160	1/2.5" CMOS	fixed	2,8 mm	B/W	No	169,5x70x67,5	19
67.3786.30	Bullet	5M	3840x2160	1/2.8" Sony Starvis	fixed	2,8 mm	B/W	No	169,5x70x67,5	20
67.3786.30/F	Bullet	5M	3840x2160	1/2.8" Sony Starvis	fixed	2,8 mm	In color	No	169,5x70x67,5	32
67.3786.50	Bullet	5M	3840x2160	1/2.8" Sony Starvis	Motorized AF	2,7-13,5 mm	B/W	No	263x93x91	23
67.3786.50/F	Bullet	5M	3840x2160	1/2.8" Sony Starvis	Motorized AF	2,7-13,5 mm	In color	No	263x93x91	34
67.3786.35	Bullet	8M	3840x2160	1/2.8" Sony CMOS	fixed	2,8 mm	B/W	No	169,5x70x67,5	21
67.3786.60	Dome	5M Lite	2592x1944	1/3" CMOS	fixed	2,8 mm	B/W	No	Ø96x91	24
67.3786.65	Dome	5M Lite	2592x1944	1/2.8" Sony Starvis	fixed	2,8 mm	B/W	Yes	Ø96x91	25
67.3786.65/F	Dome	5M Lite	2592x1944	1/2.8" Sony Starvis	fixed	2,8 mm	In color	Yes	Ø96x91	35
67.3786.80	Dome	5M Lite	2592x1944	1/2.8" Sony Starvis	Motorized AF	2,7-13,5 mm	B/W	Yes	Ø115x113	28
67.3786.70	Dome	5M	3840x2160	1/2.8" Sony Starvis	fixed	2,8 mm	B/W	No	Ø96x91	26
67.3786.70/F	Dome	5M	3840x2160	1/2.8" Sony Starvis	fixed	2,8 mm	In color	No	Ø96x91	36
67.3786.85	Dome	5M	3840x2160	1/2.8" Sony Starvis	Motorized AF	2,7-13,5 mm	B/W	No	Ø115x113	29
67.3786.85/F	Dome	5M	3840x2160	1/2.8" Sony Starvis	Motorized AF	2,7-13,5 mm	In color	No	Ø115x113	37
67.3786.75	Dome	8M	3840x2160	1/2.8" Sony CMOS	fixed	2,8 mm	B/W	No	Ø96x91	27

IP - PoE

Code	Typology	Sensor resolution	Video resolution pixel	Image Sensor	Optical Type	Optics	Night Vision	Starlight	Dimensions mm	Pag.
67.3787.10	Bullet	2M	1920x1080	1/2.9" Progressive scan CMOS	fixed	2,8 mm	B/W	No	70x65,5x169,5	39
67.3787.25	Bullet	2M	1920x1080	1/2.8" Sony Starvis	fixed	2,8 mm	B/W	Yes	175x72x66	40
67.3787.25/F	Bullet	2M	1920x1080	1/2.8" Sony Starvis	fixed	2,8 mm	In color	Yes	175x72x66	48
67.3787.30	Bullet	5M	2592x1944	1/2.8" Sony Starvis	fixed	2,8 mm	B/W	Yes	175x72x66	41
67.3787.30/F	Bullet	5M	2592x1944	1/2.8" Sony Starvis	fixed	2,8 mm	In color	Yes	175x72x66	49
67.3787.40	Bullet	2M	1920x1080	1/2.9" Progressive scan CMOS	Varifocal	2,8-12 mm	B/W	No	90x92x211	42
67.3787.45/F	Bullet	2M	1920x1080	1/2.8" Sony Starvis	Motorized AF	2,7-13,5 mm	In color	Yes	93x91x263	50
67.3787.50/F	Bullet	5M	2592x1944	1/2.8" Sony Starvis	Motorized AF	2,7-13,5 mm	In color	Yes	93x91x263	51
67.3787.55	Bullet	8M	3840x2160	1/2.7" Smart Sens CMOS	Motorized AF	2,7-13,5 mm	B/W	No	93x91x263	43
67.3787.60	Dome	2M	1920x1080	1/2.9" Progressive scan	fixed	2,8 mm	B/W	No	Ø96x91	44
67.3787.60/F	Dome	2M	1920x1080	1/2.8" Sony Starvis	fixed	2,8 mm	In color	Yes	Ø96x91	52
67.3787.65	Dome	5M	2592x1944	1/3" Progressive scan	fixed	2,8 mm	B/W	No	Ø96x91	45
67.3787.65/F	Dome	5M	2592x1944	1/2.8" Sony Starvis	fixed	2,8 mm	In color	Yes	Ø96x91	53
67.3787.75	Dome	8M	3840x2160	1/2.7" Smart Sens	fixed	2,8 mm	B/W	No	Ø96x91	46
67.3787.80/F	Dome	2M	1920x1080	1/2.8" Sony Starvis	Motorized AF	2,7-13,5 mm	In color	Yes	Ø115x113	54
67.3787.85/F	Dome	5M	2592x1944	1/2.8" Sony Starvis	Motorized AF	2,7-13,5 mm	In color	Yes	Ø115x113	55
67.3787.90	Dome	8M	3840x2160	1/2.7" Smart Sens	Motorized AF	2,7-13,5 mm	B/W	No	Ø115x113	47

AHD CAMERAS



Over the years, analog cameras have evolved in terms of resolution, software and hardware, allowing **HD** resolutions to be achieved through analog technologies, giving life to the **A-HD** standard (Analog High Definition).

TECHNOLOGY 4 IN 1 AHD - TVI - CVI - CVBS

All our AHD analog cameras have **4 in 1 function**: they are capable of transmitting signal in **AHD, TVI, CVI and CVBS format**.

This is a great advantage, because it makes them versatile and compatible with the major XVR and DVR manufacturers on the market.



Integrated **UTC Joystick** (up the coax – on the coaxial): located on the coaxial cable of the camera, it allows a **quick adjustment of the image or video format** by displaying the parameters on the screen without the use of additional tools.



In video surveillance, optics have an important role, and without losing ourselves in intrinsic characteristics, let's say that in our case it is crucial for the framing of the scene to be monitored, in particular we can have fixed, manual varifocal or motorized varifocal lenses.



The varifocal optics allow you to adjust the zoom and focus of the frame, the great advantage of the motorized version is that all this takes place **electronically and automatically** even remotely.



Fixed lenses have seen a change in the market, as cameras were once used mainly outdoors and therefore a 3.6mm lens was perfect, but today the market requires the use of this type of cameras in different environments. , even indoors, for this type of need **we have decided to equip all our fixed lens cameras with a 2.8mm lens**, allowing you to frame wider angles and keep more space under control.

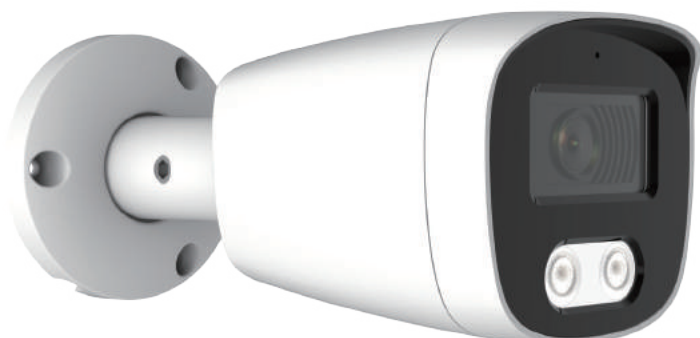


All SKB cameras allow night vision up to 40mt (depending on the model); the biggest news certainly concerns the **FULL COLOR technology**, which thanks to the integrad FLASH LEDs, allows you to view **color images even in total darkness**.



BULLET CAMERA 5M LITE 2,8mm IR LED

A-HD 4in1 (AHD / TVI / CVI / CVBS) Bullet type camera with 5M Lite 1/3" CMOS sensor and 2592x1944 pixel video resolution, 2.8mm fixed lens and night vision up to 25m via 2 IR LEDs. metal also suitable for outdoor use 12VDC 500mA power supply and BNC connection.



TECHNOLOGY 4 IN 1
AHD - TVI - CVI - CVBS



Code	67.3786.10
Technology	A-HD 4 in 1
Typology	Bullet
Video resolution	2592x1944pixel
Frame rate	20fps
Output supportati	AHD / TVI / CVI / CVBS
Image Sensor	1/3" CMOS
Sensor resolution	5M Lite
Optical Type	fixed
Optics	2,8mm
Zoom	-
Viewing angle	90°
Night Vision	B/W
Starlight	No
Number of leds	2
Led type	IR 42μ
Led range	25m
Video output	BNC
Structure	Metal
Vandal-Proof	No
Joint	3 assi
Junction box	Cod. 67.3790.03
Power supply	12VDC - 500mA
Protection degree	IP 67
Operating temperature	-10 ~ +60°C
Dimensions	169,5x70x67,5mm
Weight	600g

Sensor + chipset	F37P + FH8538M
Standard video (Resolutions@FPS)	- AHD/TVI: 5M@20fps/12.5fps, 4M@30fps, 2M@30fps; - CVI: 4M@30fps, 2M@30fps

OSD Menu	Yes
UTC Joystick	Yes
FOV	H 93° / V 50° / D 108°
Pan - Tilt	No
IR CUT	Yes
IR Filter	Auto
Min Illumination	0,01Lux
WDR	DWDR
Video standard	PAL / NTSC
Noise reduction	DNR
White balance	Auto
Additional functions	Multilingual, Mirror, Image Adjustments

day



night



compatible with:

- 67.3800.04 - XVR 4 CHANNELS 5MPX AHD 5 IN 1
- 67.3800.13 - XVR 8 CHANNELS 5MPX AHD 5 IN 1
- 67.3810.04 - XVR 4 CHANNELS REAL 4K AHD 5 IN 1
- 67.3810.05 - XVR 8 CHANNELS REAL 4K AHD 5 IN 1
- 67.3810.00 - XVR 4 CHANNELS 4K-N AHD 5 IN 1
- 67.3810.01 - XVR 8 CHANNELS 4K-N AHD 5 IN 1
- 67.3810.02 - XVR 16 CHANNELS 4K-N AHD 5 IN 1

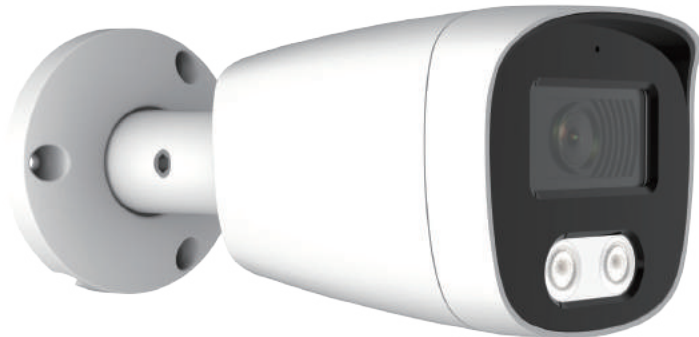


8 023389 763481

Master Carton
Quantity: 30 pcs

BULLET CAMERA 4K LITE 2,8mm IR LED

A-HD 4in1 (AHD / TVI / CVI / CVBS) Bullet type camera with 5M 1 / 2.5" CMOS sensor and 3840x2160 pixel video resolution, 2.8mm fixed lens and night vision up to 25m via 2 IR LEDs. Metal frame also suitable for outdoor use 12VDC 500mA power supply and BNC connection.



TECHNOLOGY 4 IN 1
AHD - TVI - CVI - CVBS



Code	67.3786.20
Technology	A-HD 4 in 1
Typology	Bullet
Video resolution	3840x2160pixel
Frame rate	15fps
Output supportati	AHD / TVI / CVI / CVBS
Image Sensor	1/2.5" CMOS
Sensor resolution	5M
Optical Type	fixed
Optics	2,8mm
Zoom	-
Viewing angle	110°
Night Vision	B/W
Starlight	No
Number of leds	2
Led type	IR 42μ
Led range	25m
Video output	BNC
Structure	Metal
Vandal-Proof	No
Joint	3 assi
Junction box	Cod. 67.3790.03
Power supply	12VDC - 500mA
Protection degree	IP 67
Operating temperature	-10 ~ +60°C
Dimensions	169,5x70x67,5mm
Weight	600g

Sensor + chipset	K17 + FH8538E
Standard video (Resolutions@FPS)	- AHD: 8M@15fps, 5M@20fps/12.5fps, 4M/2M@30fps/25fps - TVI/CVI: 8M@15fps/12.5fps, 5M@20fps/12.5fps, 4M/2M@30fps/25fps

OSD Menu	Yes
UTC Joystick	Yes
FOV	H 109° / V 58° / D 131°
Pan - Tilt	No
IR CUT	Yes
IR Filter	Auto
Min Illumination	0,01Lux
WDR	DWDR
Video standard	PAL / NTSC
Noise reduction	DNR
White balance	Auto
Additional functions	Multilingual, Mirror, Image Adjustments

day



night



compatible with:

- 67.3810.04 - XVR 4 CHANNELS REAL 4K AHD 5 IN 1
- 67.3810.05 - XVR 8 CHANNELS REAL 4K AHD 5 IN 1
- 67.3810.00 - XVR 4 CHANNELS 4K-N AHD 5 IN 1
- 67.3810.01 - XVR 8 CHANNELS 4K-N AHD 5 IN 1
- 67.3810.02 - XVR 16 CHANNELS 4K-N AHD 5 IN 1

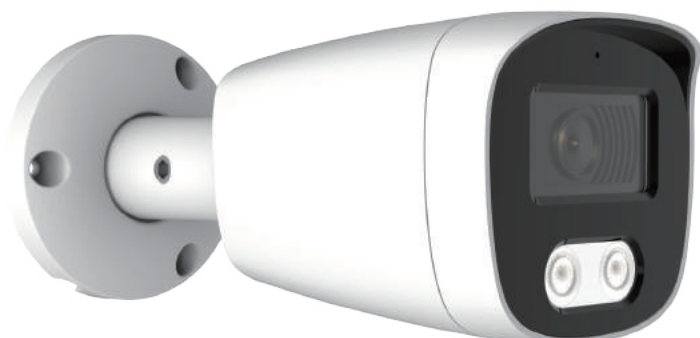


8 023389 763504

Master Carton
Quantity: 30 pcs

BULLET CAMERA 4K LITE SONY STARVIS 2,8mm IR LED

A-HD 4in1 (AHD / TVI / CVI / CVBS) Bullet type camera with 5M 1 / 2.8" Sony Starvis CMOS sensor and video resolution 3840x2160 pixels, 2.8mm fixed lens and night vision up to 25m via 2 IR LEDs. Structure in metal also suitable for outdoor use 12VDC 500mA power supply and BNC connection.



TECHNOLOGY 4 IN 1
AHD - TVI - CVI - CVBS



Code	67.3786.30
Technology	A-HD 4 in 1
Typology	Bullet
Video resolution	3840x2160pixel
Frame rate	15fps
Output supportati	AHD / TVI / CVI / CVBS
Image Sensor	1/2.8" Sony Starvis
Sensor resolution	5M
Optical Type	fixed
Optics	2,8mm
Zoom	-
Viewing angle	107°
Night Vision	B/W
Starlight	No
Number of leds	2
Led type	IR 42μ
Led range	25m
Video output	BNC
Structure	Metal
Vandal-Proof	No
Joint	3 assi
Junction box	Cod. 67.3790.03
Power supply	12VDC - 500mA
Protection degree	IP 67
Operating temperature	-10 ~ +60°C
Dimensions	169,5x70x67,5mm
Weight	600g

Sensor + chipset	IMX335 + EN781
Standard video (Resolutions@FPS)	- AHD: 8M@15fps, 5M@20fps/12.5fps, 4M@30fps, 2M@25fps; - CVI: 8M@15fps/12.5fps, 4M@30fps, 2M@25fps; - TVI: 8M@15fps/12.5fps, 5M@20fps/12.5fps, 4M@30fps, 2M@25fps;

OSD Menu	Yes
UTC Joystick	Yes
FOV	H 107° / V 57° / D 128°
Pan - Tilt	No
IR CUT	Yes
IR Filter	Auto
Min Illumination	0,01Lux
WDR	WDR
Video standard	PAL / NTSC
Noise reduction	3DNR
White balance	Auto
Additional functions	Multilingual, Mirror, Image Adjustments

day



night



compatible with:

- 67.3810.04 - XVR 4 CHANNELS REAL 4K AHD 5 IN 1
- 67.3810.05 - XVR 8 CHANNELS REAL 4K AHD 5 IN 1
- 67.3810.00 - XVR 4 CHANNELS 4K-N AHD 5 IN 1
- 67.3810.01 - XVR 8 CHANNELS 4K-N AHD 5 IN 1
- 67.3810.02 - XVR 16 CHANNELS 4K-N AHD 5 IN 1

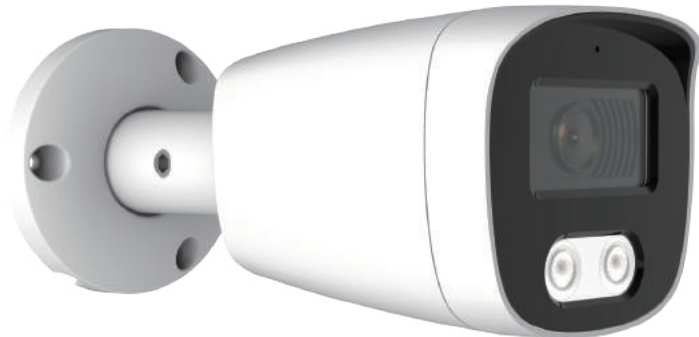


8 023389 763528

Master Carton
Quantity: 30 pcs

BULLET CAMERA 4K SONY 2,8mm IR LED

A-HD 4in1 (AHD / TVI / CVI / CVBS) Bullet type camera with 8M 1 / 2.8" Sony CMOS sensor and 3840x2160 pixel video resolution, 2.8mm fixed lens and night vision up to 25m via 2 IR LEDs. metal also suitable for outdoor use 12VDC 500mA power supply and BNC connection.



TECHNOLOGY 4 IN 1
AHD - TVI - CVI - CVBS



Code	67.3786.35
Technology	A-HD 4 in 1
Typology	Bullet
Video resolution	3840x2160pixel
Frame rate	15fps
Output supportati	AHD / TVI / CVI / CVBS
Image Sensor	1/2.8" Sony CMOS
Sensor resolution	8M
Optical Type	fixed
Optics	2,8mm
Zoom	-
Viewing angle	96°
Night Vision	B/W
Starlight	No
Number of leds	2
Led type	IR 42μ
Led range	25m
Video output	BNC
Structure	Metal
Vandal-Proof	No
Joint	3 assi
Junction box	Cod. 67.3790.03
Power supply	12VDC - 500mA
Protection degree	IP 67
Operating temperature	-10 ~ +60°C
Dimensions	169,5x70x67,5mm
Weight	600g

Sensor + chipset	IMX415 + EN781
Standard video (Resolutions@FPS)	- AHD/TVI/CVI:8M@15fps/12.5fps, 4M@30fps, 2M@25fps

OSD Menu	Yes
UTC Joystick	Yes
FOV	H 96° / V 52° / D 114°
Pan - Tilt	No
IR CUT	Yes
IR Filter	Auto
Min Illumination	0,01Lux
WDR	WDR
Video standard	PAL / NTSC
Noise reduction	3DNR
White balance	Auto
Additional functions	Multilingual, Mirror, Image Adjustments

day



night



compatible with:

- 67.3810.04 - XVR 4 CHANNELS REAL 4K AHD 5 IN 1
- 67.3810.05 - XVR 8 CHANNELS REAL 4K AHD 5 IN 1
- 67.3810.00 - XVR 4 CHANNELS 4K-N AHD 5 IN 1
- 67.3810.01 - XVR 8 CHANNELS 4K-N AHD 5 IN 1
- 67.3810.02 - XVR 16 CHANNELS 4K-N AHD 5 IN 1



8 023389 763542

Master Carton
Quantity: 30 pcs

BULLET CAMERA 4K LITE VARIFOCAL LENS IR LED

A-HD 4in1 (AHD / TVI / CVI / CVBS) Bullet type camera with 5M Lite 1/3" CMOS sensor and 2592x1944 pixel video resolution, 2.8-12mm varifocal lens and night vision up to 40m via 4 IR LEDs. Metal frame also suitable for outdoor use 12VDC 750mA power supply and BNC connection.



TECHNOLOGY 4 IN 1
AHD - TVI - CVI - CVBS

MANUAL LENS



Code	67.3786.40
Technology	A-HD 4 in 1
Typology	Bullet
Video resolution	2592x1944pixel
Frame rate	20fps
Output supportati	AHD / TVI / CVI / CVBS
Image Sensor	1/3" CMOS
Sensor resolution	5M Lite
Optical Type	Varifocal
Optics	2,8-12mm
Zoom	Manual
Viewing angle	90°
Night Vision	B/W
Starlight	No
Number of leds	4
Led type	IR 42μ
Led range	40m
Video output	BNC
Structure	Metal
Vandal-Proof	No
Joint	3 assi
Junction box	Cod. 67.3790.05
Power supply	12VDC - 750mA
Protection degree	IP 67
Operating temperature	-10 ~ +60°C
Dimensions	211x92x90mm
Weight	1000g

Sensor + chipset	F37P + FH8538M
Standard video (Resolutions@FPS)	- AHD/TVI: 5M@20fps/12.5fps, 4M@30fps, 2M@30fps; - CVI: 4M@30fps, 2M@30fps

OSD Menu	Yes
UTC Joystick	Yes
FOV	H 91°-31° / V 49° - 17° / D 108° - 35°
Pan - Tilt	No
IR CUT	Yes
IR Filter	Auto
Min Illumination	0,01Lux
WDR	DWDR
Video standard	PAL / NTSC
Noise reduction	DNR
White balance	Auto
Additional functions	Multilingual, Mirror, Image Adjustments

day



night



compatible with:

- 67.3800.04 - XVR 4 CHANNELS 5MPX AHD 5 IN 1
- 67.3800.13 - XVR 8 CHANNELS 5MPX AHD 5 IN 1
- 67.3810.04 - XVR 4 CHANNELS REAL 4K AHD 5 IN 1
- 67.3810.05 - XVR 8 CHANNELS REAL 4K AHD 5 IN 1
- 67.3810.00 - XVR 4 CHANNELS 4K-N AHD 5 IN 1
- 67.3810.01 - XVR 8 CHANNELS 4K-N AHD 5 IN 1
- 67.3810.02 - XVR 16 CHANNELS 4K-N AHD 5 IN 1

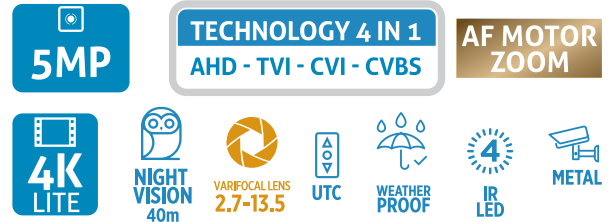
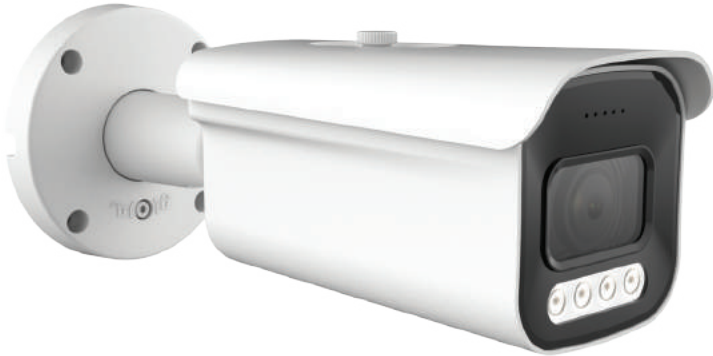


8 023389 763634

Master Carton
Quantity: 16 pcs

BULLET CAMERA 4K LITE SONY STARVIS MOTOR ZOOM AF IR LED

A-HD 4in1 (AHD / TVI / CVI / CVBS) Bullet type camera with 5M 1 / 2.8" Sony Starvis CMOS sensor and video resolution 3840x2160 pixels, motorized lens with 2.7-13.5mm AF and night vision up to 40m with 4 IR LEDs. Metal structure also suitable for outdoor use. 12VDC 750mA power supply and BNC connection.



Code	67.3786.50
Technology	A-HD 4 in 1
Typology	Bullet
Video resolution	3840x2160pixel
Frame rate	15fps
Output supportati	AHD / TVI / CVI / CVBS
Image Sensor	1/2.8" Sony Starvis
Sensor resolution	5M
Optical Type	Motorized AF
Optics	2,7-13,5mm
Zoom	5x
Viewing angle	103°
Night Vision	B/W
Starlight	No
Number of leds	4
Led type	IR 42μ
Led range	40m
Video output	BNC
Structure	Metal
Vandal-Proof	No
Joint	3 assi
Junction box	Cod. 67.3790.05
Power supply	12VDC - 750mA
Protection degree	IP 67
Operating temperature	-10 ~ +60°C
Dimensions	263x93x91mm
Weight	1200g

Sensor + chipset	IMX335 + EN781
Standard video (Resolutions@FPS)	- AHD: 8M@15fps, 5M@20fps/12.5fps, 4M@30fps, 2M@25fps; - CVI: 8M@15fps/12.5fps, 4M@30fps, 2M@25fps; - TVI: 8M@15fps/12.5fps, 5M@20fps/12.5fps, 4M@30fps, 2M@25fps;
OSD Menu	Yes
UTC Joystick	Yes
FOV	H 103°-29° / V 54° - 16° / D 124° - 33°
Pan - Tilt	No
IR CUT	Yes
IR Filter	Auto
Min Illumination	0,01Lux
WDR	WDR
Video standard	PAL / NTSC
Noise reduction	3DNR
White balance	Auto
Additional functions	Multilingual, Mirror, Image Adjustments

day



night



compatible with:

- 67.3810.04 - XVR 4 CHANNELS REAL 4K AHD 5 IN 1
- 67.3810.05 - XVR 8 CHANNELS REAL 4K AHD 5 IN 1
- 67.3810.00 - XVR 4 CHANNELS 4K-N AHD 5 IN 1
- 67.3810.01 - XVR 8 CHANNELS 4K-N AHD 5 IN 1
- 67.3810.02 - XVR 16 CHANNELS 4K-N AHD 5 IN 1



8 023389 763566

Master Carton
Quantity: 12 pcs

DOME CAMERA 5M LITE 2,8mm IR LED

A-HD 4in1 (AHD / TVI / CVI / CVBS) Dome type camera with 5M Lite 1/3" CMOS sensor and 2592x1944 pixel video resolution, 2.8mm fixed lens and night vision up to 25m via 2 IR LEDs. metal also suitable for outdoor use 12VDC 500mA power supply and BNC connection.



TECHNOLOGY 4 IN 1
AHD - TVI - CVI - CVBS



Code	67.3786.60
Technology	A-HD 4 in 1
Typology	Dome
Video resolution	2592x1944pixel
Frame rate	20fps
Output supportati	AHD / TVI / CVI / CVBS
Image Sensor	1/3" CMOS
Sensor resolution	5M Lite
Optical Type	fixed
Optics	2,8mm
Zoom	-
Viewing angle	90°
Night Vision	B/W
Starlight	No
Number of leds	2
Led type	IR 42μ
Led range	25m
Video output	BNC
Structure	Metal
Vandal-Proof	Yes
Joint	No
Junction box	Cod. 67.3790.03
Power supply	12VDC - 500mA
Protection degree	IP 67
Operating temperature	-10 ~ +60°C
Dimensions	Ø96x91mm
Weight	600g

Sensor + chipset	F37P + FH8538M
Standard video (Resolutions@FPS)	- AHD/TVI: 5M@20fps/12.5fps, 4M@30fps, 2M@30fps; - CVI: 4M@30fps, 2M@30fps

OSD Menu	Yes
UTC Joystick	Yes
FOV	H 93° / V 50° / D 108°
Pan - Tilt	No
IR CUT	Yes
IR Filter	Auto
Min Illumination	0,01Lux
WDR	DWDR
Video standard	PAL / NTSC
Noise reduction	DNR
White balance	Auto
Additional functions	Multilingual, Mirror, Image Adjustments

day



night



compatible with:

- 67.3800.04 - XVR 4 CHANNELS 5MPX AHD 5 IN 1
- 67.3800.13 - XVR 8 CHANNELS 5MPX AHD 5 IN 1
- 67.3810.04 - XVR 4 CHANNELS REAL 4K AHD 5 IN 1
- 67.3810.05 - XVR 8 CHANNELS REAL 4K AHD 5 IN 1
- 67.3810.00 - XVR 4 CHANNELS 4K-N AHD 5 IN 1
- 67.3810.01 - XVR 8 CHANNELS 4K-N AHD 5 IN 1
- 67.3810.02 - XVR 16 CHANNELS 4K-N AHD 5 IN 1



8 023389 76364 1

Master Carton
Quantity: 45 pcs

DOME CAMERA 5M LITE SONY STARVIS 2,8mm IR LED

A-HD 4in1 (AHD / TVI / CVI / CVBS) Dome type camera with 5M Lite 1 / 2.8" Sony Starvis CMOS sensor and video resolution 2592x1944 pixels, 2.8mm fixed lens and night vision up to 25m via 2 IR LEDs. Metal frame also suitable for outdoor use 12VDC 500mA power supply and BNC connection.



TECHNOLOGY 4 IN 1
AHD - TVI - CVI - CVBS



Code	67.3786.65
Technology	A-HD 4 in 1
Typology	Dome
Video resolution	2592x1944pixel
Frame rate	20fps
Output supportati	AHD / TVI / CVI / CVBS
Image Sensor	1/2.8" Sony Starvis
Sensor resolution	5M Lite
Optical Type	fixed
Optics	2,8mm
Zoom	-
Viewing angle	107°
Night Vision	B/W
Starlight	Yes
Number of leds	2
Led type	IR 42μ
Led range	25m
Video output	BNC
Structure	Metal
Vandal-Proof	Yes
Joint	No
Junction box	Cod. 67.3790.03
Power supply	12VDC - 500mA
Protection degree	IP 67
Operating temperature	-10 ~ +60°C
Dimensions	Ø96x91mm
Weight	600g

Sensor + chipset	IMX307 + EN772T
Standard video (Resolutions@FPS)	- AHD/TVI: 5M@20fps/12.5fps, 4M@30fps,2M@30fps; - CVI: 4M@30fps, 2M@30fps

OSD Menu	Yes
UTC Joystick	Yes
FOV	H 107° / V 57° / D 128°
Pan - Tilt	No
IR CUT	Yes
IR Filter	Auto
Min Illumination	0,005Lux
WDR	WDR
Video standard	PAL / NTSC
Noise reduction	AI-DNR
White balance	Auto
Additional functions	Multilingual, Mirror, Image Adjustments

day



night



compatible with:

- 67.3800.04 - XVR 4 CHANNELS 5MPX AHD 5 IN 1
- 67.3800.13 - XVR 8 CHANNELS 5MPX AHD 5 IN 1
- 67.3810.04 - XVR 4 CHANNELS REAL 4K AHD 5 IN 1
- 67.3810.05 - XVR 8 CHANNELS REAL 4K AHD 5 IN 1
- 67.3810.00 - XVR 4 CHANNELS 4K-N AHD 5 IN 1
- 67.3810.01 - XVR 8 CHANNELS 4K-N AHD 5 IN 1
- 67.3810.02 - XVR 16 CHANNELS 4K-N AHD 5 IN 1



8 023389 763658

Master Carton
Quantity: 45 pcs

DOME CAMERA 4K LITE SONY STARVIS 2,8mm IR LED

A-HD 4in1 (AHD / TVI / CVI / CVBS) Dome type camera with 5M 1 / 2.8" Sony Starvis CMOS sensor and video resolution 3840x2160 pixels, 2.8mm fixed lens and night vision up to 25m via 2 IR LEDs. Structure in metal also suitable for outdoor use 12VDC 500mA power supply and BNC connection.



TECHNOLOGY 4 IN 1
AHD - TVI - CVI - CVBS



Code	67.3786.70
Technology	A-HD 4 in 1
Typology	Dome
Video resolution	3840x2160pixel
Frame rate	15fps
Output supportati	AHD / TVI / CVI / CVBS
Image Sensor	1/2.8" Sony Starvis
Sensor resolution	5M
Optical Type	fixed
Optics	2,8mm
Zoom	-
Viewing angle	107°
Night Vision	B/W
Starlight	No
Number of leds	2
Led type	IR 42μ
Led range	25m
Video output	BNC
Structure	Metal
Vandal-Proof	Yes
Joint	No
Junction box	Cod. 67.3790.03
Power supply	12VDC - 500mA
Protection degree	IP 67
Operating temperature	-10 ~ +60°C
Dimensions	Ø96x91mm
Weight	600g

Sensor + chipset	IMX335 + EN781
Standard video (Resolutions@FPS)	- AHD: 8M@15fps, 5M@20fps/12.5fps, 4M@30fps, 2M@25fps; - CVI: 8M@15fps/12.5fps, 4M@30fps, 2M@25fps; - TVI: 8M@15fps/12.5fps, 5M@20fps/12.5fps, 4M@30fps, 2M@25fps;

OSD Menu	Yes
UTC Joystick	Yes
FOV	H 107° / V 57° / D 128°
Pan - Tilt	No
IR CUT	Yes
IR Filter	Auto
Min Illumination	0,01Lux
WDR	WDR
Video standard	PAL / NTSC
Noise reduction	3DNR
White balance	Auto
Additional functions	Multilingual, Mirror, Image Adjustments

day



night



compatible with:

- 67.3810.04 - XVR 4 CHANNELS REAL 4K AHD 5 IN 1
- 67.3810.05 - XVR 8 CHANNELS REAL 4K AHD 5 IN 1
- 67.3810.00 - XVR 4 CHANNELS 4K-N AHD 5 IN 1
- 67.3810.01 - XVR 8 CHANNELS 4K-N AHD 5 IN 1
- 67.3810.02 - XVR 16 CHANNELS 4K-N AHD 5 IN 1



8 023389 763696

Master Carton
Quantity: 45 pcs

DOME CAMERA 4K SONY 2,8mm IR LED

A-HD 4in1 (AHD / TVI / CVI / CVBS) Dome type camera with 8M 1 / 2.8" Sony CMOS sensor and 3840x2160 pixel video resolution, 2.8mm fixed lens and night vision up to 25m via 2 IR LEDs. metal also suitable for outdoor use 12VDC 500mA power supply and BNC connection.



TECHNOLOGY 4 IN 1
AHD - TVI - CVI - CVBS



Code	67.3786.75
Technology	A-HD 4 in 1
Typology	Dome
Video resolution	3840x2160pixel
Frame rate	15fps
Output supportati	AHD / TVI / CVI / CVBS
Image Sensor	1/2.8" Sony CMOS
Sensor resolution	8M
Optical Type	fixed
Optics	2,8mm
Zoom	-
Viewing angle	96°
Night Vision	B/W
Starlight	No
Number of leds	2
Led type	IR 42μ
Led range	25m
Video output	BNC
Structure	Metal
Vandal-Proof	Yes
Joint	No
Junction box	Cod. 67.3790.03
Power supply	12VDC - 500mA
Protection degree	IP 67
Operating temperature	-10 ~ +60°C
Dimensions	Ø96x91mm
Weight	600g

Sensor + chipset	IMX415 + EN781
Standard video (Resolutions@FPS)	- AHD/TVI/CVI:8M@15fps/12.5fps, 4M@30fps, 2M@25fps

OSD Menu	Yes
UTC Joystick	Yes
FOV	H 96° / V 52° / D 114°
Pan - Tilt	No
IR CUT	Yes
IR Filter	Auto
Min Illumination	0,01Lux
WDR	WDR
Video standard	PAL / NTSC
Noise reduction	3DNR
White balance	Auto
Additional functions	Multilingual, Mirror, Image Adjustments

day



night



compatible with:

- 67.3810.04 - XVR 4 CHANNELS REAL 4K AHD 5 IN 1
- 67.3810.05 - XVR 8 CHANNELS REAL 4K AHD 5 IN 1
- 67.3810.00 - XVR 4 CHANNELS 4K-N AHD 5 IN 1
- 67.3810.01 - XVR 8 CHANNELS 4K-N AHD 5 IN 1
- 67.3810.02 - XVR 16 CHANNELS 4K-N AHD 5 IN 1

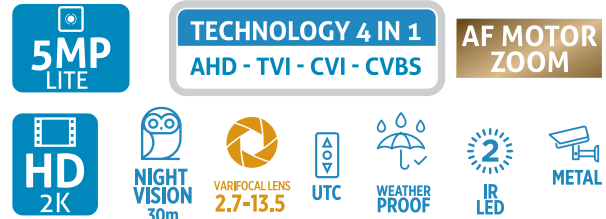


8 023389 763702

Master Carton
Quantity: 45 pcs

DOME CAMERA 5M LITE SONY STARVIS MOTOR ZOOM AF IR LED

A-HD 4in1 (AHD / TVI / CVI / CVBS) Dome type camera with 5M Lite 1 / 2.8" Sony Starvis CMOS sensor and 2592x1944 pixel video resolution, motorized lens with 2.7-13.5mm AF and night vision up to at 30m via 2 IR LEDs. Metal structure also suitable for outdoor use. 12VDC 500mA power supply and BNC connection.

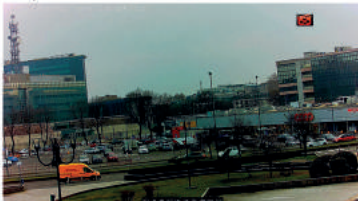


Code	67.3786.80
Technology	A-HD 4 in 1
Typology	Dome
Video resolution	2592x1944pixel
Frame rate	20fps
Output supportati	AHD / TVI / CVI / CVBS
Image Sensor	1/2.8" Sony Starvis
Sensor resolution	5M Lite
Optical Type	Motorized AF
Optics	2,7-13,5mm
Zoom	5x
Viewing angle	103°
Night Vision	B/W
Starlight	Yes
Number of leds	2
Led type	IR 42μ
Led range	30m
Video output	BNC
Structure	Metal
Vandal-Proof	Yes
Joint	No
Junction box	Cod. 67.3790.05
Power supply	12VDC - 500mA
Protection degree	IP 67
Operating temperature	-10 ~ +60°C
Dimensions	Ø115x113mm
Weight	800g

Sensor + chipset	IMX307 + EN772T
Standard video (Resolutions@FPS)	- AHD/TVI: 5M@20fps/12.5fps, 4M@30fps, 2M@30fps; - CVI: 4M@30fps, 2M@30fps

OSD Menu	Yes
UTC Joystick	Yes
FOV	H 103°-29° / V 54° - 16° / D 124° - 33°
Pan - Tilt	No
IR CUT	Yes
IR Filter	Auto
Min Illumination	0,005Lux
WDR	WDR
Video standard	PAL / NTSC
Noise reduction	AI-DNR
White balance	Auto
Additional functions	Multilingual, Mirror, Image Adjustments

day



night



compatible with:

- 67.3800.04 - XVR 4 CHANNELS 5MPX AHD 5 IN 1
- 67.3800.13 - XVR 8 CHANNELS 5MPX AHD 5 IN 1
- 67.3810.04 - XVR 4 CHANNELS REAL 4K AHD 5 IN 1
- 67.3810.05 - XVR 8 CHANNELS REAL 4K AHD 5 IN 1
- 67.3810.00 - XVR 4 CHANNELS 4K-N AHD 5 IN 1
- 67.3810.01 - XVR 8 CHANNELS 4K-N AHD 5 IN 1
- 67.3810.02 - XVR 16 CHANNELS 4K-N AHD 5 IN 1



8 023389 763740

Master Carton
Quantity: 24 pcs

DOME CAMERA 4K LITE SONY STARVIS MOTOR ZOOM AF IR LED

A-HD 4in1 (AHD / TVI / CVI / CVBS) Dome type camera with 5M 1 / 2.8" Sony Starvis CMOS sensor and 3840x2160 pixel video resolution, motorized lens with 2.7-13.5mm AF and night vision up to 30m with 2 IR LEDs. Metal structure also suitable for outdoor use. 12VDC 500mA power supply and BNC connection.



TECHNOLOGY 4 IN 1
AHD - TVI - CVI - CVBS

AF MOTOR ZOOM



Code	67.3786.85
Technology	A-HD 4 in 1
Typology	Dome
Video resolution	3840x2160pixel
Frame rate	15fps
Output supportati	AHD / TVI / CVI / CVBS
Image Sensor	1/2.8" Sony Starvis
Sensor resolution	5M
Optical Type	Motorized AF
Optics	2,7-13,5mm
Zoom	5x
Viewing angle	103°
Night Vision	B/W
Starlight	No
Number of leds	2
Led type	IR 42μ
Led range	30m
Video output	BNC
Structure	Metal
Vandal-Proof	Yes
Joint	No
Junction box	Cod. 67.3790.05
Power supply	12VDC - 500mA
Protection degree	IP 67
Operating temperature	-10 ~ +60°C
Dimensions	Ø115x113mm
Weight	800g

Sensor + chipset	IMX335 + EN781
Standard video (Resolutions@FPS)	- AHD: 8M@15fps, 5M@20fps/12.5fps, 4M@30fps, 2M@25fps; - CVI: 8M@15fps/12.5fps, 4M@30fps, 2M@25fps; - TVI: 8M@15fps/12.5fps, 5M@20fps/12.5fps, 4M@30fps, 2M@25fps;
OSD Menu	Yes
UTC Joystick	Yes
FOV	H 103°-29° / V 54° - 16° / D 124° - 33°
Pan - Tilt	No
IR CUT	Yes
IR Filter	Auto
Min Illumination	0,01Lux
WDR	WDR
Video standard	PAL / NTSC
Noise reduction	3DNR
White balance	Auto
Additional functions	Multilingual, Mirror, Image Adjustments

day



night



compatible with:

- 67.3810.04 - XVR 4 CHANNELS REAL 4K AHD 5 IN 1
- 67.3810.05 - XVR 8 CHANNELS REAL 4K AHD 5 IN 1
- 67.3810.00 - XVR 4 CHANNELS 4K-N AHD 5 IN 1
- 67.3810.01 - XVR 8 CHANNELS 4K-N AHD 5 IN 1
- 67.3810.02 - XVR 16 CHANNELS 4K-N AHD 5 IN 1

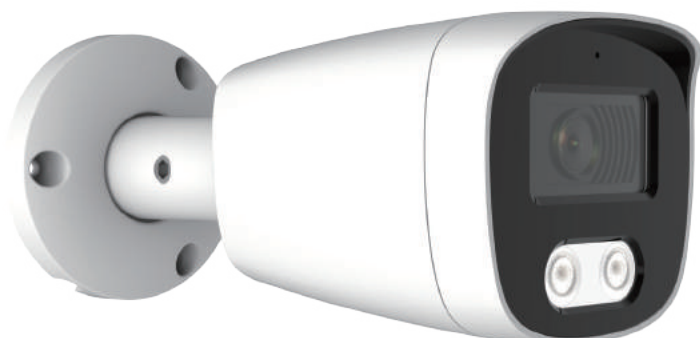


8 023389 763764

Master Carton
Quantity: 24 pcs

BULLET CAMERA 5M LITE 2,8mm FULL COLOR

A-HD 4in1 (AHD / TVI / CVI / CVBS) Bullet type camera with 5M Lite 1/3" CMOS sensor and 2592x1944 pixel video resolution, 2.8mm fixed lens and night vision up to 25m in color using FULL COLOR technology thanks with 2 WHITE LEDs. Metal structure also suitable for outdoor use. Power supply 12VDC 700mA and BNC connection.



TECHNOLOGY 4 IN 1
AHD - TVI - CVI - CVBS



Code	67.3786.10/F
Technology	A-HD 4 in 1
Typology	Bullet
Video resolution	2592x1944pixel
Frame rate	20fps
Output supportati	AHD / TVI / CVI / CVBS
Image Sensor	1/3" CMOS
Sensor resolution	5M Lite
Optical Type	fixed
Optics	2,8mm
Zoom	-
Viewing angle	90°
Night Vision	In color
Starlight	No
Number of leds	2
Led type	White LED
Led range	25m
Video output	BNC
Structure	Metal
Vandal-Proof	No
Joint	3 assi
Junction box	Cod. 67.3790.03
Power supply	12VDC - 700mA
Protection degree	IP 67
Operating temperature	-10 ~ +60°C
Dimensions	169,5x70x67,5mm
Weight	600g

Sensor + chipset	F37P + FH8538M
Standard video (Resolutions@FPS)	- AHD/TVI: 5M@20fps/12.5fps, 4M@30fps, 2M@30fps; - CVI: 4M@30fps, 2M@30fps

OSD Menu	Yes
UTC Joystick	Yes
FOV	H 93° / V 50° / D 108°
Pan - Tilt	No
IR CUT	Yes
IR Filter	Auto
Min Illumination	0,01Lux
WDR	DWDR
Video standard	PAL / NTSC
Noise reduction	DNR
White balance	Auto
Additional functions	Multilingual, Mirror, Image Adjustments

day



night



compatible with:

- 67.3800.04 - XVR 4 CHANNELS 5MPX AHD 5 IN 1
- 67.3800.13 - XVR 8 CHANNELS 5MPX AHD 5 IN 1
- 67.3810.04 - XVR 4 CHANNELS REAL 4K AHD 5 IN 1
- 67.3810.05 - XVR 8 CHANNELS REAL 4K AHD 5 IN 1
- 67.3810.00 - XVR 4 CHANNELS 4K-N AHD 5 IN 1
- 67.3810.01 - XVR 8 CHANNELS 4K-N AHD 5 IN 1
- 67.3810.02 - XVR 16 CHANNELS 4K-N AHD 5 IN 1

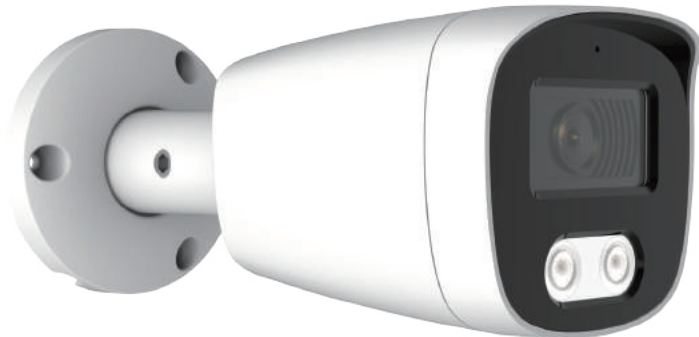


8 023389 763498

Master Carton
Quantity: 30 pcs

BULLET CAMERA 5M LITE SONY STARVIS 2,8mm FULL COLOR

A-HD 4in1 (AHD / TVI / CVI / CVBS) Bullet type camera with 5M Lite 1 / 2.8" Sony Starvis CMOS sensor and video resolution 2592x1944 pixels, 2.8mm fixed lens and night vision up to 25m in color using FULL technology COLOR thanks to 2 WHITE LEDs. Metal structure also suitable for outdoor use. 12VDC 700mA power supply and BNC connection.



TECHNOLOGY 4 IN 1
AHD - TVI - CVI - CVBS



Code	67.3786.25/F
Technology	A-HD 4 in 1
Typology	Bullet
Video resolution	2592x1944pixel
Frame rate	20fps
Output supportati	AHD / TVI / CVI / CVBS
Image Sensor	1/2.8" Sony Starvis
Sensor resolution	5M Lite
Optical Type	fixed
Optics	2,8mm
Zoom	-
Viewing angle	107°
Night Vision	In color
Starlight	Yes
Number of leds	2
Led type	White LED
Led range	25m
Video output	BNC
Structure	Metal
Vandal-Proof	No
Joint	3 assi
Junction box	Cod. 67.3790.03
Power supply	12VDC - 700mA
Protection degree	IP 67
Operating temperature	-10 ~ +60°C
Dimensions	169,5x70x67,5mm
Weight	600g

Sensor + chipset	IMX307 + EN772T
Standard video (Resolutions@FPS)	- AHD/TVI: 5M@20fps/12.5fps, 4M@30fps, 2M@30fps; - CVI: 4M@30fps, 2M@30fps

OSD Menu	Yes
UTC Joystick	Yes
FOV	H 107° / V 57° / D 128°
Pan - Tilt	No
IR CUT	Yes
IR Filter	Auto
Min Illumination	0,005Lux
WDR	WDR
Video standard	PAL / NTSC
Noise reduction	AI-DNR
White balance	Auto
Additional functions	Multilingual, Mirror, Image Adjustments

day



night



compatible with:

- 67.3800.04 - XVR 4 CHANNELS 5MPX AHD 5 IN 1
- 67.3800.13 - XVR 8 CHANNELS 5MPX AHD 5 IN 1
- 67.3810.04 - XVR 4 CHANNELS REAL 4K AHD 5 IN 1
- 67.3810.05 - XVR 8 CHANNELS REAL 4K AHD 5 IN 1
- 67.3810.00 - XVR 4 CHANNELS 4K-N AHD 5 IN 1
- 67.3810.01 - XVR 8 CHANNELS 4K-N AHD 5 IN 1
- 67.3810.02 - XVR 16 CHANNELS 4K-N AHD 5 IN 1

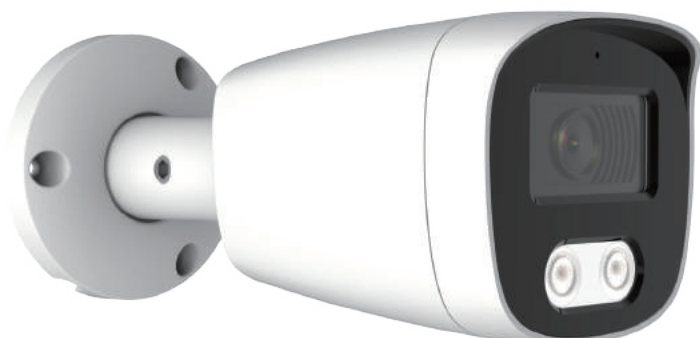


8 023389 763511

Master Carton
Quantity: 30 pcs

BULLET CAMERA 4K LITE SONY STARVIS 2,8mm FULL COLOR

A-HD 4in1 (AHD / TVI / CVI / CVBS) Bullet type camera with 5M 1 / 2.8" Sony Starvis CMOS sensor and video resolution 3840x2160 pixels, 2.8mm fixed lens and night vision up to 25m in color using FULL COLOR technology thanks to 2 WHITE LEDs. Metal frame also suitable for outdoor use. Power supply 12VDC 700mA and BNC connection.



TECHNOLOGY 4 IN 1
AHD - TVI - CVI - CVBS



Code	67.3786.30/F
Technology	A-HD 4 in 1
Typology	Bullet
Video resolution	3840x2160pixel
Frame rate	15fps
Output supportati	AHD / TVI / CVI / CVBS
Image Sensor	1/2.8" Sony Starvis
Sensor resolution	5M
Optical Type	fixed
Optics	2,8mm
Zoom	-
Viewing angle	107°
Night Vision	In color
Starlight	No
Number of leds	2
Led type	White LED
Led range	25m
Video output	BNC
Structure	Metal
Vandal-Proof	No
Joint	3 assi
Junction box	Cod. 67.3790.03
Power supply	12VDC - 700mA
Protection degree	IP 67
Operating temperature	-10 ~ +60°C
Dimensions	169,5x70x67,5mm
Weight	600g

Sensor + chipset	IMX335 + EN781
Standard video (Resolutions@FPS)	- AHD: 8M@15fps, 5M@20fps/12.5fps, 4M@30fps, 2M@25fps; - CVI: 8M@15fps/12.5fps, 4M@30fps, 2M@25fps; - TVI: 8M@15fps/12.5fps, 5M@20fps/12.5fps, 4M@30fps, 2M@25fps;

OSD Menu	Yes
UTC Joystick	Yes
FOV	H 107° / V 55° / D 127°
Pan - Tilt	No
IR CUT	Yes
IR Filter	Auto
Min Illumination	0,01Lux
WDR	WDR
Video standard	PAL / NTSC
Noise reduction	3DNR
White balance	Auto
Additional functions	Multilingual, Mirror, Image Adjustments

day



night



compatible with:

- 67.3810.04 - XVR 4 CHANNELS REAL 4K AHD 5 IN 1
- 67.3810.05 - XVR 8 CHANNELS REAL 4K AHD 5 IN 1
- 67.3810.00 - XVR 4 CHANNELS 4K-N AHD 5 IN 1
- 67.3810.01 - XVR 8 CHANNELS 4K-N AHD 5 IN 1
- 67.3810.02 - XVR 16 CHANNELS 4K-N AHD 5 IN 1

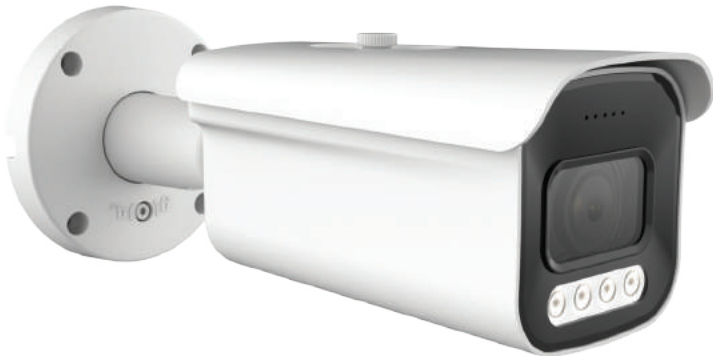


8 023389 763535

Master Carton
Quantity: 30 pcs

BULLET CAMERA 5M LITE SONY STARVIS MOTOR ZOOM AF FULL COLOR

A-HD 4in1 (AHD / TVI / CVI / CVBS) Bullet type camera with 5M Lite 1 / 2.8" Sony Starvis CMOS sensor and video resolution 2592x1944 pixels, motorized lens with 2.7-13.5mm AF and night vision up to 40m in color using FULL COLOR technology thanks to 4 WHITE LEDs. Metal structure also suitable for outdoor use. 12VDC 1A power supply and BNC connection.



Code	67.3786.45/F
Technology	A-HD 4 in 1
Typology	Bullet
Video resolution	2592x1944pixel
Frame rate	20fps
Output supportati	AHD / TVI / CVI / CVBS
Image Sensor	1/2.8" Sony Starvis
Sensor resolution	5M Lite
Optical Type	Motorized AF
Optics	2,7-13,5mm
Zoom	5x
Viewing angle	103°
Night Vision	In color
Starlight	Yes
Number of leds	4
Led type	White LED
Led range	40m
Video output	BNC
Structure	Metal
Vandal-Proof	No
Joint	3 assi
Junction box	Cod. 67.3790.05
Power supply	12VDC - 1A
Protection degree	IP 67
Operating temperature	-10 ~ +60°C
Dimensions	263x93x91mm
Weight	1200g

Sensor + chipset	IMX307 + EN772T
Standard video (Resolutions@FPS)	- AHD/TVI: 5M@20fps/12.5fps, 4M@30fps, 2M@30fps; - CVI: 4M@30fps, 2M@30fps

OSD Menu	Yes
UTC Joystick	Yes
FOV	H 103°-29° / V 54° - 16° / D 124° - 33°
Pan - Tilt	No
IR CUT	Yes
IR Filter	Auto
Min Illumination	0,005Lux
WDR	WDR
Video standard	PAL / NTSC
Noise reduction	AI-DNR
White balance	Auto
Additional functions	Multilingual, Mirror, Image Adjustments

day



night



compatible with:

- 67.3800.04 - XVR 4 CHANNELS 5MPX AHD 5 IN 1
- 67.3800.13 - XVR 8 CHANNELS 5MPX AHD 5 IN 1
- 67.3810.04 - XVR 4 CHANNELS REAL 4K AHD 5 IN 1
- 67.3810.05 - XVR 8 CHANNELS REAL 4K AHD 5 IN 1
- 67.3810.00 - XVR 4 CHANNELS 4K-N AHD 5 IN 1
- 67.3810.01 - XVR 8 CHANNELS 4K-N AHD 5 IN 1
- 67.3810.02 - XVR 16 CHANNELS 4K-N AHD 5 IN 1

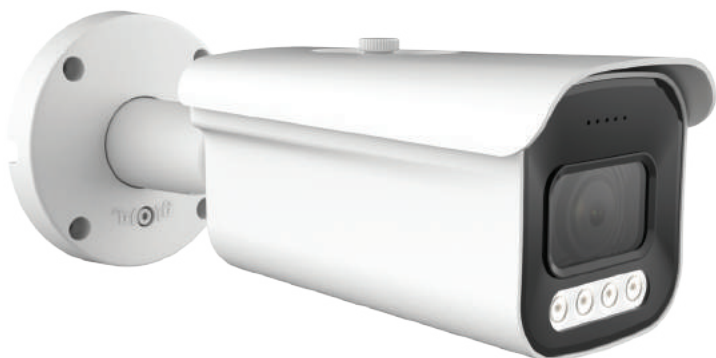


8 023389 764082

Master Carton
Quantity: 12 pcs

BULLET CAMERA 4K LITE SONY STARVIS MOTOR ZOOM AF FULL COLOR

A-HD 4in1 (AHD / TVI / CVI / CVBS) Bullet type camera with 5M 1 / 2.8" Sony Starvis CMOS sensor and video resolution 3840x2160 pixels, motorized lens with 2.7-13.5mm AF and night vision up to 40m in color using FULL COLOR technology thanks to 4 WHITE LEDs. Metal structure also suitable for outdoor use. 12VDC 1A power supply and BNC connection.



TECHNOLOGY 4 IN 1
AHD - TVI - CVI - CVBS

AF MOTOR ZOOM



Code	67.3786.50/F
Technology	A-HD 4 in 1
Typology	Bullet
Video resolution	3840x2160pixel
Frame rate	15fps
Output supportati	AHD / TVI / CVI / CVBS
Image Sensor	1/2.8" Sony Starvis
Sensor resolution	5M
Optical Type	Motorized AF
Optics	2,7-13,5mm
Zoom	5x
Viewing angle	103°
Night Vision	In color
Starlight	No
Number of leds	4
Led type	White LED
Led range	40m
Video output	BNC
Structure	Metal
Vandal-Proof	No
Joint	3 assi
Junction box	Cod. 67.3790.05
Power supply	12VDC - 1A
Protection degree	IP 67
Operating temperature	-10 ~ +60°C
Dimensions	263x93x91mm
Weight	1200g

Sensor + chipset	IMX335 + EN781
Standard video (Resolutions@FPS)	- AHD: 8M@15fps, 5M@20fps/12.5fps, 4M@30fps, 2M@25fps; - CVI: 8M@15fps/12.5fps, 4M@30fps, 2M@25fps; - TVI: 8M@15fps/12.5fps, 5M@20fps/12.5fps, 4M@30fps, 2M@25fps;

OSD Menu	Yes
UTC Joystick	Yes
FOV	H 103°-29° / V 54° - 16° / D 124° - 33°
Pan - Tilt	No
IR CUT	Yes
IR Filter	Auto
Min Illumination	0,01Lux
WDR	WDR
Video standard	PAL / NTSC
Noise reduction	3DNR
White balance	Auto
Additional functions	Multilingual, Mirror, Image Adjustments

day



night



compatible with:

- 67.3810.04 - XVR 4 CHANNELS REAL 4K AHD 5 IN 1
- 67.3810.05 - XVR 8 CHANNELS REAL 4K AHD 5 IN 1
- 67.3810.00 - XVR 4 CHANNELS 4K-N AHD 5 IN 1
- 67.3810.01 - XVR 8 CHANNELS 4K-N AHD 5 IN 1
- 67.3810.02 - XVR 16 CHANNELS 4K-N AHD 5 IN 1



8 023389 763573

Master Carton
Quantity: 12 pcs

DOME CAMERA 5M LITE SONY STARVIS 2,8mm FULL COLOR

A-HD 4in1 (AHD / TVI / CVI / CVBS) Dome type camera with 5M Lite 1 / 2.8" Sony Starvis CMOS sensor and video resolution 2592x1944 pixels, 2.8mm fixed lens and night vision up to 25m in color using FULL technology COLOR thanks to 2 WHITE LEDs. Metal structure also suitable for outdoor use. 12VDC 500mA power supply and BNC connection.



TECHNOLOGY 4 IN 1
AHD - TVI - CVI - CVBS



Code	67.3786.65/F
Technology	A-HD 4 in 1
Typology	Dome
Video resolution	2592x1944pixel
Frame rate	20fps
Output supportati	AHD / TVI / CVI / CVBS
Image Sensor	1/2.8" Sony Starvis
Sensor resolution	5M Lite
Optical Type	fixed
Optics	2,8mm
Zoom	-
Viewing angle	107°
Night Vision	In color
Starlight	Yes
Number of leds	2
Led type	White LED
Led range	25m
Video output	BNC
Structure	Metal
Vandal-Proof	Yes
Joint	No
Junction box	Cod. 67.3790.03
Power supply	12VDC - 500mA
Protection degree	IP 67
Operating temperature	-10 ~ +60°C
Dimensions	Ø96x91mm
Weight	600g

Sensor + chipset	IMX307 + EN772T
Standard video (Resolutions@FPS)	- AHD/TVI: 5M@20fps/12.5fps, 4M@30fps, 2M@30fps; - CVI: 4M@30fps, 2M@30fps

OSD Menu	Yes
UTC Joystick	Yes
FOV	H 107° / V 57° / D 128°
Pan - Tilt	No
IR CUT	Yes
IR Filter	Auto
Min Illumination	0,005Lux
WDR	WDR
Video standard	PAL / NTSC
Noise reduction	AI-DNR
White balance	Auto
Additional functions	Multilingual, Mirror, Image Adjustments

day



night



compatible with:

- 67.3800.04 - XVR 4 CHANNELS 5MPX AHD 5 IN 1
- 67.3800.13 - XVR 8 CHANNELS 5MPX AHD 5 IN 1
- 67.3810.04 - XVR 4 CHANNELS REAL 4K AHD 5 IN 1
- 67.3810.05 - XVR 8 CHANNELS REAL 4K AHD 5 IN 1
- 67.3810.00 - XVR 4 CHANNELS 4K-N AHD 5 IN 1
- 67.3810.01 - XVR 8 CHANNELS 4K-N AHD 5 IN 1
- 67.3810.02 - XVR 16 CHANNELS 4K-N AHD 5 IN 1



8 023389 763665

Master Carton
Quantity: 45 pcs

DOME CAMERA 4K LITE SONY STARVIS 2,8mm FULL COLOR

A-HD 4in1 (AHD / TVI / CVI / CVBS) Dome type camera with 5M 1 / 2.8" Sony Starvis CMOS sensor and 3840x2160 pixel video resolution, 2.8mm fixed lens and night vision up to 25m in color using FULL COLOR technology thanks to 2 WHITE LEDs. Metal frame also suitable for outdoor use. 12VDC 500mA power supply and BNC connection.



TECHNOLOGY 4 IN 1
AHD - TVI - CVI - CVBS



Code	67.3786.70/F
Technology	A-HD 4 in 1
Typology	Dome
Video resolution	3840x2160pixel
Frame rate	15fps
Output supportati	AHD / TVI / CVI / CVBS
Image Sensor	1/2.8" Sony Starvis
Sensor resolution	5M
Optical Type	fixed
Optics	2,8mm
Zoom	-
Viewing angle	107°
Night Vision	In color
Starlight	No
Number of leds	2
Led type	White LED
Led range	25m
Video output	BNC
Structure	Metal
Vandal-Proof	Yes
Joint	No
Junction box	Cod. 67.3790.03
Power supply	12VDC - 500mA
Protection degree	IP 67
Operating temperature	-10 ~ +60°C
Dimensions	Ø96x91mm
Weight	600g

Sensor + chipset	IMX335 + EN781
Standard video (Resolutions@FPS)	- AHD: 8M@15fps, 5M@20fps/12.5fps, 4M@30fps, 2M@25fps; - CVI: 8M@15fps/12.5fps, 4M@30fps, 2M@25fps; - TVI: 8M@15fps/12.5fps, 5M@20fps/12.5fps, 4M@30fps, 2M@25fps;
OSD Menu	Yes
UTC Joystick	Yes
FOV	H 107° / V 55° / D 127°
Pan - Tilt	No
IR CUT	Yes
IR Filter	Auto
Min Illumination	0,01Lux
WDR	WDR
Video standard	PAL / NTSC
Noise reduction	3DNR
White balance	Auto
Additional functions	Multilingual, Mirror, Image Adjustments

day



night



compatible with:

- 67.3810.04 - XVR 4 CHANNELS REAL 4K AHD 5 IN 1
- 67.3810.05 - XVR 8 CHANNELS REAL 4K AHD 5 IN 1
- 67.3810.00 - XVR 4 CHANNELS 4K-N AHD 5 IN 1
- 67.3810.01 - XVR 8 CHANNELS 4K-N AHD 5 IN 1
- 67.3810.02 - XVR 16 CHANNELS 4K-N AHD 5 IN 1



8 023389 763672

Master Carton
Quantity: 45 pcs

DOME CAMERA 4K LITE SONY STARVIS MOTOR ZOOM AF FULL COLOR

A-HD 4in1 (AHD / TVI / CVI / CVBS) Dome type camera with 5M 1 / 2.8" Sony Starvis CMOS sensor and 3840x2160 pixel video resolution, motorized lens with 2.7-13.5mm AF and night vision up to 30m in color using FULL COLOR technology thanks to 2 WHITE LEDs. Metal structure also suitable for outdoor use. 12VDC 550mA power supply and BNC connection.



Code	67.3786.85/F
Technology	A-HD 4 in 1
Typology	Dome
Video resolution	3840x2160pixel
Frame rate	15fps
Output supportati	AHD / TVI / CVI / CVBS
Image Sensor	1/2.8" Sony Starvis
Sensor resolution	5M
Optical Type	Motorized AF
Optics	2,7-13,5mm
Zoom	5x
Viewing angle	103°
Night Vision	In color
Starlight	No
Number of leds	2
Led type	White LED
Led range	30m
Video output	BNC
Structure	Metal
Vandal-Proof	Yes
Joint	No
Junction box	Cod. 67.3790.05
Power supply	12VDC - 550mA
Protection degree	IP 67
Operating temperature	-10 ~ +60°C
Dimensions	Ø115x113mm
Weight	800g

Sensor + chipset	IMX335 + EN781
Standard video (Resolutions@FPS)	- AHD: 8M@15fps, 5M@20fps/12.5fps, 4M@30fps, 2M@25fps; - CVI: 8M@15fps/12.5fps, 4M@30fps, 2M@25fps; - TVI: 8M@15fps/12.5fps, 5M@20fps/12.5fps, 4M@30fps, 2M@25fps;
OSD Menu	Yes
UTC Joystick	Yes
FOV	H 103°-29° / V 54° - 16° / D 124° - 33°
Pan - Tilt	No
IR CUT	Yes
IR Filter	Auto
Min Illumination	0,01Lux
WDR	WDR
Video standard	PAL / NTSC
Noise reduction	3DNR
White balance	Auto
Additional functions	Multilingual, Mirror, Image Adjustments

day



night



compatible with:

- 67.3810.04 - XVR 4 CHANNELS REAL 4K AHD 5 IN 1
- 67.3810.05 - XVR 8 CHANNELS REAL 4K AHD 5 IN 1
- 67.3810.00 - XVR 4 CHANNELS 4K-N AHD 5 IN 1
- 67.3810.01 - XVR 8 CHANNELS 4K-N AHD 5 IN 1
- 67.3810.02 - XVR 16 CHANNELS 4K-N AHD 5 IN 1



8 023389 763771

Master Carton
Quantity: 24 pcs

IP CAMERAS



POE

Our choice was to create a **a professional range that is technologically ready to face the demands of the market**, which is why all our IP cameras have **integrated POE technology**. They are able to get the power and the video signal on a single RJ45 cable and this goes very well with our POE NVRs thanks to which it is possible to connect them directly without going through other devices, or if you prefer you can connect in decentralized way through SWITCH POE, in any case they save: space, costs and time on wiring.

ONVIF

The standard **ONVIF** communication protocol guarantees security and compatibility, in fact it transmits the signal only after logging in with a username and password. The standard **ONVIF** also makes the cameras **compatible with NVRs and XVRs** from other brands.

H.265+
4K

Our models feature **H.265+ video encoding**, which makes it possible to reach **high resolutions up to 4K** with excellent image fluidity and greater **video compression** by optimizing hard disk space.

SKB IP POE cameras are also able to monitor a scene or landscape in **stand alone mode**. This means that thanks to the CMS software for PC, MAC and the SMARTPHONE app, you can watch live images without the need for an NVR. This is useful for capturing streaming videos outside the video surveillance system.



In videosurveillance, optics have an important role, and without losing ourselves in intrinsic characteristics, let's say that in our case it is crucial for the framing of the scene to be monitored, in particular we can have fixed, manual varifocal or motorized varifocal lenses.



The varifocal optics allow you to adjust the zoom and focus of the frame. The great advantage of the motorized version is that all this takes place **electronically and automatically** even remotely.



Fixed lenses have seen a change in the market, as cameras were once used mainly outdoors and therefore a 3.6mm lens was perfect, but today the market requires the use of this type of cameras in different environments, even indoors, for this type of need **we have decided to equip all our fixed lens cameras with a 2.8mm lens** allowing you to frame wider angles and keep more space under control.

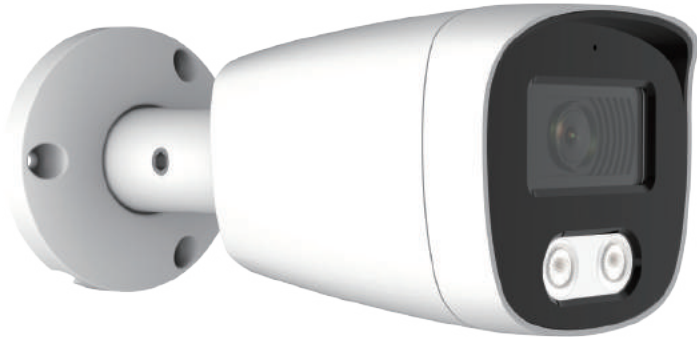


All SKB cameras allow night vision up to 40mt (depending on the model); the biggest news certainly concerns the **FULL COLOR technology**, which thanks to integrated FLASH LEDs, allows you to view **color images even in total darkness**.



IP POE BULLET CAMERA 2M 2,8mm IR LED

IP POE Bullet Camera with 2M 1 / 2.9 "Progressive scan CMOS sensor and video resolution 1920x1080 pixels, 2.8mm fixed lens and night vision up to 25m via 2 IR LEDs. Metal structure also suitable for outdoor use. Onvif compatible and Bitvision P2P app, additional adjustments via web interface. Power supply with POE standard IEEE 802.3af or 12VDC 700mA.



Code	67.3787.10
Technology	IP POE
Typology	Bullet
Video resolution	1920x1080pixel
Frame rate	30fps
Video encoding	H.265+
Onvif	2.4 s/t/g
Image Sensor	1/2.9" Progressive scan CMOS
Sensor resolution	2M
Optical Type	fixed
Optics	2,8mm
Zoom	-
Viewing angle	105°
Night Vision	B/W
Starlight	No
Number of leds	2
Led type	IR 42µ
Led range	25m
Stream type	1/2
Main stream	2304*1296@30fps
Structure	Metal
Vandal-Proof	No
Joint	3 assi
Junction box	Cod. 67.3790.03
RJ45 port	10/100
Standard POE	IEEE 802.3af
Power supply	12VDC - 700mA
Protection degree	IP 67
Operating temperature	-10° ~ +60°C
Dimensions	70x65,5x169,5mm
Weight	600g

Sensor + chipset	GC2063 + FH8652
Main stream 2	1920*1080@30fps
Sub stream 1	1280*720@30fps
TriStream	/

DHCP	Supported
Network standard	TCP/IP, ICMP, HTTP, HTTPS, FTP, DHCP, DNS, DDNS, RTP, RTSP, RTCP, PPPoE, NTP, UPnP, SMTP, UDP
P2P	BitVision
Supported browsers	IE 8-11, Chrome, Firefox, Safari
FOV	H 105° / V 56° / D 125°
Pan - Tilt	No
IR CUT	Yes
IR Filter	Auto
Min Illumination	0,01Lux
Smart functions	Face recognition, intrusion detection, video black out warning
Additional functions	Multilingual, Privacy mask, defog

day



night



compatible with:

- 67.3811.50 - NVR 4 CHANNELS 4K
- 67.3811.60 - NVR 8 CHANNELS 4K
- 67.3811.70 - NVR 16 CHANNELS 4K

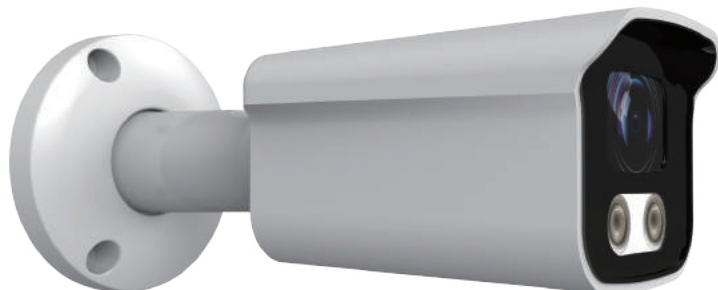


8 023389 763832

Master Carton
Quantity: 30 pcs

IP POE BULLET CAMERA 2M SONY STARVIS 2,8mm IR LED

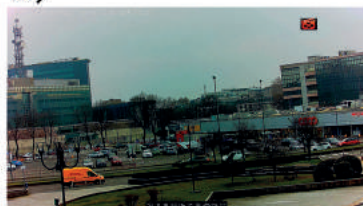
IP POE Bullet Camera with 2M 1 / 2.8 "Sony Starvis CMOS sensor and video resolution 1920x1080 pixels, 2.8mm fixed lens and night vision up to 25m via 2 IR LEDs. Metal structure also suitable for outdoor use. Onvif compatible and Bitvision P2P app, additional adjustments via web interface. Power supply with POE standard IEEE 802.3af or 12VDC 1A



Code	67.3787.25
Technology	IP POE
Typology	Bullet
Video resolution	1920x1080pixel
Frame rate	30fps
Video encoding	H.265+
Onvif	2.4 s/t/g
Image Sensor	1/2.8" Sony Starvis
Sensor resolution	2M
Optical Type	fixed
Optics	2,8mm
Zoom	-
Viewing angle	107°
Night Vision	B/W
Starlight	Yes
Number of leds	2
Led type	IR 42μ
Led range	25m
Stream type	1/2/3
Main stream	2304*1296@30fps
Structure	Metal
Vandal-Proof	No
Joint	3 assi
Junction box	Cod. 67.3790.03
RJ45 port	10/100
Standard POE	IEEE 802.3af
Power supply	12VDC - 1A
Protection degree	IP 67
Operating temperature	-10° ~ +60°C
Dimensions	175x72x66mm
Weight	700g

Sensor + chipset	IMX307 + RV1109
Main stream 2	1920*1080@30fps
Sub stream 1	1280*720@30fps
TriStream	1280*720@30fps 720*480@30fps 352*288@30fps
DHCP	Supported
Network standard	TCP/IP, ICMP, HTTP, HTTPS, FTP, DHCP, DNS, DDNS, RTP, RTSP, RTCP, PPPoE, NTP, UPnP, SMTP, UDP
P2P	BitVision
Supported browsers	IE 8-11, Chrome, Firefox, Safari
FOV	H 107° / V 57° / D 128°
Pan - Tilt	No
IR CUT	Yes
IR Filter	Auto
Min Illumination	0,005Lux
Smart functions	Face recognition, intrusion detection, video black out warning
Additional functions	Multilingual, Privacy mask, defog

day



night



compatible with:

- 67.3811.50 - NVR 4 CHANNELS 4K
- 67.3811.60 - NVR 8 CHANNELS 4K
- 67.3811.70 - NVR 16 CHANNELS 4K

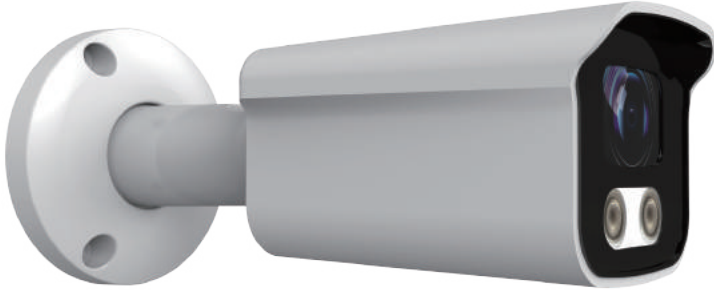


8 023389 763856

Master Carton
Quantity: 25 pcs

IP POE BULLET CAMERA 5M SONY STARVIS 2,8mm IR LED

IP POE Bullet Camera with 5M 1 / 2.8 "Sony Starvis CMOS sensor and video resolution 2592x1944 pixels, 2.8mm fixed lens and night vision up to 25m via 2 IR LEDs. Metal structure also suitable for outdoor use. Onvif compatible and Bitvision P2P app, additional adjustments via web interface. Power supply with POE standard IEEE 802.3af or 12VDC 1A



Code	67.3787.30
Technology	IP POE
Typology	Bullet
Video resolution	2592x1944pixel
Frame rate	30fps
Video encoding	H.265+
Onvif	2.4 s/t/g
Image Sensor	1/2.8" Sony Starvis
Sensor resolution	5M
Optical Type	fixed
Optics	2,8mm
Zoom	-
Viewing angle	107°
Night Vision	B/W
Starlight	Yes
Number of leds	2
Led type	IR 42μ
Led range	25m
Stream type	1/2/3
Main stream	2592*1944@30fps
Structure	Metal
Vandal-Proof	No
Joint	3 assi
Junction box	Cod. 67.3790.03
RJ45 port	10/100
Standard POE	IEEE 802.3af
Power supply	12VDC - 1A
Protection degree	IP 67
Operating temperature	-10° ~ +60°C
Dimensions	175x72x66mm
Weight	700g

Sensor + chipset	IMX335 + RV1109
Main stream 2	2560*1440@30fps
Sub stream 1	1280*720@30fps
TriStream	1280*720@30fps 720*480@30fps 352*288@30fps
DHCP	Supported
Network standard	TCP/IP, ICMP, HTTP, HTTPS, FTP, DHCP, DNS, DDNS, RTP, RTSP, RTCP, PPPoE, NTP, UPnP, SMTP, UDP
P2P	BitVision
Supported browsers	IE 8-11, Chrome, Firefox, Safari
FOV	H 107° / V 57° / D 128°
Pan - Tilt	No
IR CUT	Yes
IR Filter	Auto
Min Illumination	0,01Lux
Smart functions	Face recognition, intrusion detection, video black out warning
Additional functions	Multilingual, Privacy mask, defog

day



night



compatible with:

- 67.3811.50 - NVR 4 CHANNELS 4K
- 67.3811.60 - NVR 8 CHANNELS 4K
- 67.3811.70 - NVR 16 CHANNELS 4K



8 023389 763863

Master Carton
Quantity: 25 pcs

IP POE BULLET CAMERA 2M VARIFOCAL IR LED

IP POE Bullet Camera with 2M 1 / 2.9 "Progressive scan CMOS sensor and 1920x1080 pixel video resolution, 2.8-12mm varifocal lens and night vision up to 40m via 4 IR LEDs. Metal structure also suitable for outdoor use. Onvif compatible and Bitvision P2P app, additional adjustments via web interface. Power supply with POE standard IEEE 802.3af or 12VDC 1A



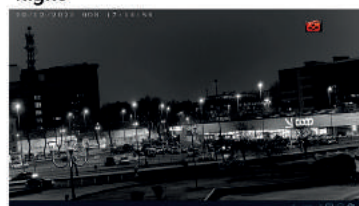
Code	67.3787.40
Technology	IP POE
Typology	Bullet
Video resolution	1920x1080pixel
Frame rate	20fps
Video encoding	H.265+
Onvif	2.4 s/t/g
Image Sensor	1/2.9" Progressive scan CMOS
Sensor resolution	2M
Optical Type	Varifocal
Optics	2,8-12mm
Zoom	Manual
Viewing angle	94°
Night Vision	B/W
Starlight	No
Number of leds	4
Led type	IR 42μ
Led range	40m
Stream type	1/2
Main stream	2304*1296@20fps
Structure	Metal
Vandal-Proof	No
Joint	3 assi
Junction box	Cod. 67.3790.05
RJ45 port	10/100
Standard POE	IEEE 802.3af
Power supply	12VDC - 1A
Protection degree	IP 67
Operating temperature	-10° ~ +60°C
Dimensions	90x92x211mm
Weight	1000g

Sensor + chipset	GC2063 + FH8652
Main stream 2	1920*1080@30fps
Sub stream 1	720*480@20fps
TriStream	/
DHCP	Supported
Network standard	TCP/IP, ICMP, HTTP, HTTPS, FTP, DHCP, DNS, DDNS, RTP, RTSP, RTCP, PPPoE, NTP, UPnP, SMTP, UDP
P2P	BitVision
Supported browsers	IE 8-11, Chrome, Firefox, Safari
FOV	H 94°-32° / V 50° - 18° / D 111° - 36°
Pan - Tilt	No
IR CUT	Yes
IR Filter	Auto
Min Illumination	0,01Lux
Smart functions	Face recognition, intrusion detection, video black out warning
Additional functions	Multilingual, Privacy mask, defog

day



night



compatible with:

- 67.3811.50 - NVR 4 CHANNELS 4K
- 67.3811.60 - NVR 8 CHANNELS 4K
- 67.3811.70 - NVR 16 CHANNELS 4K

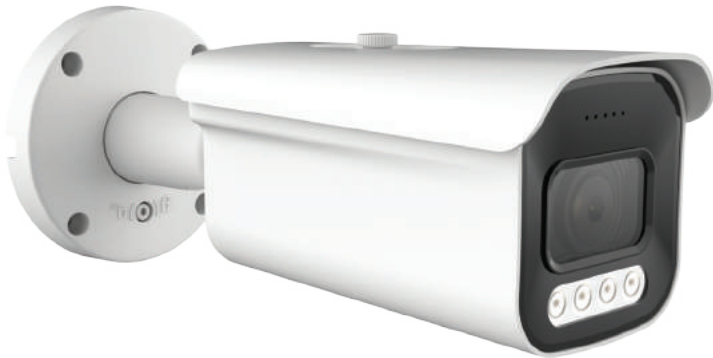


8 023389 763931

Master Carton
Quantity: 16 pcs

IP POE BULLET CAMERA 4K ZOOM AF IR LED

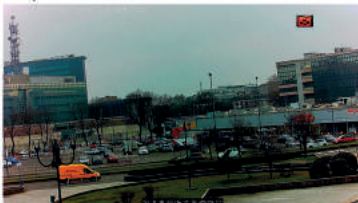
IP POE Bullet Camera with 8M 1 / 2.7 "Smart Sens CMOS sensor and video resolution 3840x2160 pixels, motorized lens with 2.7-13.5mm AF and night vision up to 40m via 4 IR LEDs. Metal structure also suitable for outdoor use. Onvif compatible and Bitvision P2P app, additional adjustments via web interface. Power supply with POE standard IEEE 802.3af or 12VDC 1A



Code	67.3787.55
Technology	IP POE
Typology	Bullet
Video resolution	3840x2160pixel
Frame rate	20fps
Video encoding	H.265+
Onvif	2.4 s/t/g
Image Sensor	1/2.7" Smart Sens CMOS
Sensor resolution	8M
Optical Type	Motorized AF
Optics	2,7-13,5mm
Zoom	5x
Viewing angle	100°
Night Vision	B/W
Starlight	No
Number of leds	4
Led type	IR 42μ
Led range	40m
Stream type	1/2/3
Main stream	3840*2160@20fps
Structure	Metal
Vandal-Proof	No
Joint	3 assi
Junction box	Cod. 67.3790.05
RJ45 port	10/100
Standard POE	IEEE 802.3af
Power supply	12VDC - 1A
Protection degree	IP 67
Operating temperature	-10° ~ +60°C
Dimensions	93x91x263mm
Weight	1200g

Sensor + chipset	SC8238 + SSC338Q
Main stream 2	2560*1440@20fps
Sub stream 1	720*480@20fps
TriStream	1280*720@20fps 720*480@20fps
DHCP	Supported
Network standard	TCP/IP, ICMP, HTTP, HTTPS, FTP, DHCP, DNS, DDNS, RTP, RTSP, RTCP, PPPoE, NTP, UPnP, SMTP, UDP
P2P	BitVision
Supported browsers	IE 8-11, Chrome, Firefox, Safari
FOV	H 100° / V 54° / D 120°
Pan - Tilt	No
IR CUT	Yes
IR Filter	Auto
Min Illumination	0,01Lux
Smart functions	Face recognition, intrusion detection, video black out warning
Additional functions	Multilingual, Privacy mask, defog

day



night



compatible with:

- 67.3811.50 - NVR 4 CHANNELS 4K
- 67.3811.60 - NVR 8 CHANNELS 4K
- 67.3811.70 - NVR 16 CHANNELS 4K



8 023389 763924

Master Carton
Quantity: 12 pcs

IP POE DOME CAMERA 2M 2,8mm IR LED

IP POE Dome Camera with 2M 1 / 2.9 "Progressive scan sensor and 1920x1080 pixel video resolution, 2.8mm fixed lens and night vision up to 25m via 2 IR LEDs. Vandal proof metal structure for outdoors. Onvif compatible and Bitvision P2P app, additional adjustments via web interface. Power supply with POE standard IEEE 802.3af or 12VDC 700mA



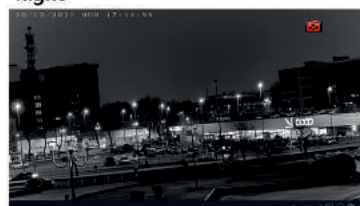
Code	67.3787.60
Technology	IP POE
Typology	Dome
Video resolution	1920x1080pixel
Frame rate	20fps
Video encoding	H.265+
Onvif	2.4 s/t/g
Image Sensor	1/2.9" Progressive scan
Sensor resolution	2M
Optical Type	fixed
Optics	2,8mm
Zoom	-
Viewing angle	105°
Night Vision	B/W
Starlight	No
Number of leds	2
Led type	IR 42μ
Led range	25m
Stream type	1/2
Main stream	2304*1296@20fps
Structure	Metal
Vandal-Proof	Yes
Joint	No
Junction box	Cod. 67.3790.03
RJ45 port	10/100
Standard POE	IEEE 802.3af
Power supply	12VDC - 700mA
Protection degree	IP 67
Operating temperature	-10° ~ +60°C
Dimensions	Ø96x91mm
Weight	600g

Sensor + chipset	GC2063 + GK7205V200
Main stream 2	1920*1080@30fps
Sub stream 1	720*480@20fps
TriStream	/
DHCP	Supported
Network standard	TCP/IP, ICMP, HTTP, HTTPS, FTP, DHCP, DNS, DDNS, RTP, RTSP, RTCP, PPPoE, NTP, UPnP, SMTP, UDP
P2P	BitVision
Supported browsers	IE 8-11, Chrome, Firefox, Safari
FOV	H 105° / V 56° / D 125°
Pan - Tilt	No
IR CUT	Yes
IR Filter	Auto
Min Illumination	0,01Lux
Smart functions	Face recognition, intrusion detection, video black out warning
Additional functions	Multilingual, Privacy mask, defog

day



night



compatible with:

- 67.3811.50 - NVR 4 CHANNELS 4K
- 67.3811.60 - NVR 8 CHANNELS 4K
- 67.3811.70 - NVR 16 CHANNELS 4K



8 023389 763948

Master Carton
Quantity: 45 pcs

IP POE DOME CAMERA 5M 2,8mm IR LED

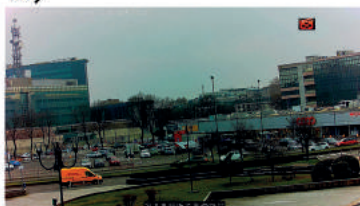
IP POE Dome Camera with 5M 1/3 "Progressive scan sensor and 2592x1944 pixel video resolution, 2.8mm fixed lens and night vision up to 25m via 2 IR LEDs. Vandal proof metal structure for outdoors. Onvif compatible and Bitvision P2P app, additional adjustments via web interface. Power supply with POE standard IEEE 802.3af or 12VDC 700mA



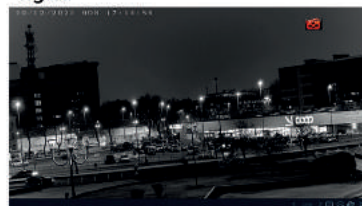
Code	67.3787.65
Technology	IP POE
Typology	Dome
Video resolution	2592x1944pixel
Frame rate	25fps
Video encoding	H.265+
Onvif	2.4 s/t/g
Image Sensor	1/3" Progressive scan
Sensor resolution	5M
Optical Type	fixed
Optics	2,8mm
Zoom	-
Viewing angle	103°
Night Vision	B/W
Starlight	No
Number of leds	2
Led type	IR 42μ
Led range	25m
Stream type	1/2
Main stream	2688*1512@25fps
Structure	Metal
Vandal-Proof	Yes
Joint	No
Junction box	Cod. 67.3790.03
RJ45 port	10/100
Standard POE	IEEE 802.3af
Power supply	12VDC - 700mA
Protection degree	IP 67
Operating temperature	-10° ~ +60°C
Dimensions	Ø96x91mm
Weight	600g

Sensor + chipset	GC4653 + GK7205V300
Main stream 2	2560*1440@25fps
Sub stream 1	720*480@25fps
TriStream	/
DHCP	Supported
Network standard	TCP/IP, ICMP, HTTP, HTTPS, FTP, DHCP, DNS, DDNS, RTP, RTSP, RTCP, PPoE, NTP, UPnP, SMTP, UDP
P2P	BitVision
Supported browsers	IE 8-11, Chrome, Firefox, Safari
FOV	H 105° / V 56° / D 126°
Pan - Tilt	No
IR CUT	Yes
IR Filter	Auto
Min Illumination	0,01Lux
Smart functions	Face recognition, intrusion detection, video black out warning
Additional functions	Multilingual, Privacy mask, defog

day



night



compatible with:

- 67.3811.50 - NVR 4 CHANNELS 4K
- 67.3811.60 - NVR 8 CHANNELS 4K
- 67.3811.70 - NVR 16 CHANNELS 4K



8 023389 763955

Master Carton
Quantity: 45 pcs

IP POE DOME CAMERA 4K 2,8mm IR LED

IP POE Dome Camera with 8M 1 / 2.7 "Smart Sens CMOS sensor and video resolution 3840x2160 pixels, 2.8mm fixed lens and night vision up to 25m via 2 IR LEDs. Vandal proof metal structure for outdoors. Onvif compatible and Bitvision P2P app, additional adjustments via web interface. Power supply with POE standard IEEE 802.3af or 12VDC 700mA



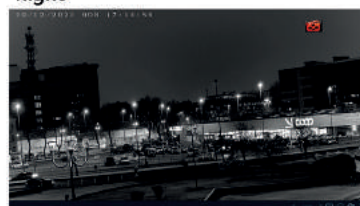
Code	67.3787.75
Technology	IP POE
Typology	Dome
Video resolution	3840x2160pixel
Frame rate	20fps
Video encoding	H.265+
Onvif	2.4 s/t/g
Image Sensor	1/2.7" Smart Sens
Sensor resolution	8M
Optical Type	fixed
Optics	2,8mm
Zoom	-
Viewing angle	100°
Night Vision	B/W
Starlight	No
Number of leds	2
Led type	IR 42μ
Led range	25m
Stream type	1/2/3
Main stream	3840*2160@20fps
Structure	Metal
Vandal-Proof	Yes
Joint	No
Junction box	Cod. 67.3790.03
RJ45 port	10/100
Standard POE	IEEE 802.3af
Power supply	12VDC - 700mA
Protection degree	IP 67
Operating temperature	-10° ~ +60°C
Dimensions	Ø96x91mm
Weight	600g

Sensor + chipset	SC8238 + SSC338Q
Main stream 2	2592*1536@20fps
Sub stream 1	720*480@20fps
TriStream	1280*720@20fps 720*480@20fps
DHCP	Supported
Network standard	TCP/IP, ICMP, HTTP, HTTPS, FTP, DHCP, DNS, DDNS, RTP, RTSP, RTCP, PPoE, NTP, UPnP, SMTP, UDP
P2P	BitVision
Supported browsers	IE 8-11, Chrome, Firefox, Safari
FOV	H 100° / V 54° / D 120°
Pan - Tilt	No
IR CUT	Yes
IR Filter	Auto
Min Illumination	0,01Lux
Smart functions	Face recognition, intrusion detection, video black out warning
Additional functions	Multilingual, Privacy mask, defog

day



night



compatible with:

- 67.3811.50 - NVR 4 CHANNELS 4K
- 67.3811.60 - NVR 8 CHANNELS 4K
- 67.3811.70 - NVR 16 CHANNELS 4K



8 023389 763986

Master Carton
Quantity: 45 pcs

IP POE DOME CAMERA 4K ZOOM AF IR LED

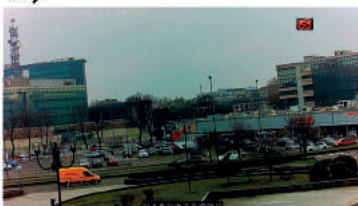
IP POE Dome Camera with 8M 1 / 2.7 "Smart Sens CMOS sensor and video resolution 3840x2160 pixels, motorized lens with 2.7-13.5mm AF and night vision up to 30m via 2 IR LEDs. Vandal proof metal structure for outdoors. Onvif compatible and Bitvision P2P app, additional adjustments via web interface. Power supply with POE standard IEEE 802.3af or 12VDC 1A



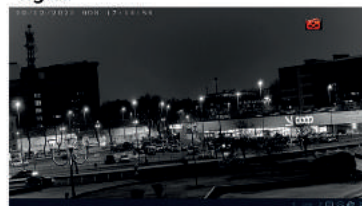
Code	67.3787.90
Technology	IP POE
Typology	Dome
Video resolution	3840x2160pixel
Frame rate	20fps
Video encoding	H.265+
Onvif	2.4 s/t/g
Image Sensor	1/2.7" Smart Sens
Sensor resolution	8M
Optical Type	Motorized AF
Optics	2,7-13,5mm
Zoom	5x
Viewing angle	108°
Night Vision	B/W
Starlight	No
Number of leds	2
Led type	IR 42μ
Led range	30m
Stream type	1/2/3
Main stream	3840*2160@20fps
Structure	Metal
Vandal-Proof	Yes
Joint	No
Junction box	Cod. 67.3790.05
RJ45 port	10/100
Standard POE	IEEE 802.3af
Power supply	12VDC - 1A
Protection degree	IP 67
Operating temperature	-10° ~ +60°C
Dimensions	Ø115x113mm
Weight	800g

Sensor + chipset	SC8238 + SSC338Q
Main stream 2	2592*1536@20fps
Sub stream 1	720*480@20fps
TriStream	1280*720@20fps 720*480@20fps
DHCP	Supported
Network standard	TCP/IP, ICMP, HTTP, HTTPS, FTP, DHCP, DNS, DDNS, RTP, RTSP, RTCP, PPPoE, NTP, UPnP, SMTP, UDP
P2P	BitVision
Supported browsers	IE 8-11, Chrome, Firefox, Safari
FOV	H 108° - 30° / V 56° - 17° / D 131° - 35°
Pan - Tilt	No
IR CUT	Yes
IR Filter	Auto
Min Illumination	0,01Lux
Smart functions	Face recognition, intrusion detection, video black out warning
Additional functions	Multilingual, Privacy mask, defog

day



night



compatible with:

67.3811.50 - NVR 4 CHANNELS 4K
67.3811.60 - NVR 8 CHANNELS 4K
67.3811.70 - NVR 16 CHANNELS 4K

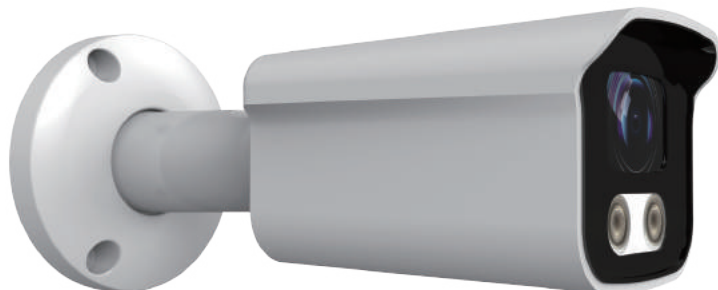


8 023389 764006

Master Carton
Quantity: 20 pcs

IP POE BULLET CAMERA 2M SONY STARVIS 2,8mm FULL COLOR

IP POE Bullet Camera with 2M 1 / 2.8 "Sony Starvis CMOS sensor and video resolution 1920x1080 pixels, 2.8mm fixed lens and night vision up to 25m in color using FULL COLOR technology thanks to 2 WHITE LEDs. Metal structure also suitable for outdoor use. Onvif compatible and Bitvision P2P app, additional adjustments via web interface. Power supply with POE standard IEEE 802.3af or 12VDC 1A



Code	67.3787.25/F
Technology	IP POE
Typology	Bullet
Video resolution	1920x1080pixel
Frame rate	25fps
Video encoding	H.265+
Onvif	2.4 s/t/g
Image Sensor	1/2.8" Sony Starvis
Sensor resolution	2M
Optical Type	fixed
Optics	2,8mm
Zoom	-
Viewing angle	107°
Night Vision	In color
Starlight	Yes
Number of leds	2
Led type	White LED
Led range	25m
Stream type	1/2/3
Main stream	2304*1296@30fps
Structure	Metal
Vandal-Proof	No
Joint	3 assi
Junction box	Cod. 67.3790.03
RJ45 port	10/100
Standard POE	IEEE 802.3af
Power supply	12VDC - 1A
Protection degree	IP 67
Operating temperature	-10° ~ +60°C
Dimensions	175x72x66mm
Weight	700g

Sensor + chipset	IMX307 + RV1109
Main stream 2	1920*1080@30fps
Sub stream 1	1280*720@30fps
TriStream	1280*720@30fps 720*480@30fps 352*288@30fps
DHCP	Supported
Network standard	TCP/IP, ICMP, HTTP, HTTPS, FTP, DHCP, DNS, DDNS, RTP, RTSP, RTCP, PPPoE, NTP, UPnP, SMTP, UDP
P2P	BitVision
Supported browsers	IE 8-11, Chrome, Firefox, Safari
FOV	H 107° / V 57° / D 128°
Pan - Tilt	No
IR CUT	Yes
IR Filter	Auto
Min Illumination	0,005Lux
Smart functions	Face recognition, intrusion detection, video black out warning
Additional functions	Multilingual, Privacy mask, defog



compatible with:

- 67.3811.50 - NVR 4 CHANNELS 4K
- 67.3811.60 - NVR 8 CHANNELS 4K
- 67.3811.70 - NVR 16 CHANNELS 4K

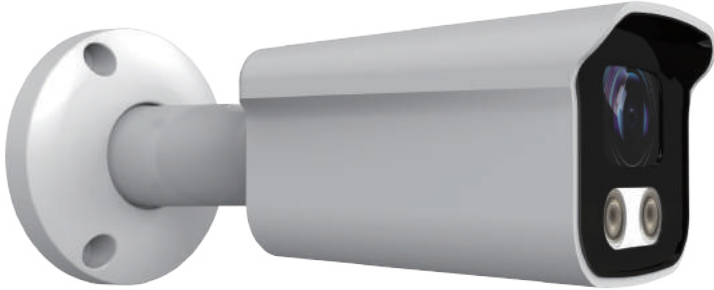


8 023389 764099

Master Carton
Quantity: 25 pcs

IP POE BULLET CAMERA 5M SONY STARVIS 2,8mm FULL COLOR

IP POE Bullet Camera with 5M 1 / 2.8 "Sony Starvis CMOS sensor and video resolution 2592x1944 pixel, 2,8mm fixed lens and night vision up to 25m in color using FULL COLOR technology thanks to 2 WHITE LEDs. Metal structure also suitable for outdoor use. Onvif compatible and Bitvision P2P app, additional adjustments via web interface. Power supply with POE standard IEEE 802.3af or 12VDC 1A



Code	67.3787.30/F
Technology	IP POE
Typology	Bullet
Video resolution	2592x1944pixel
Frame rate	30fps
Video encoding	H.265+
Onvif	2.4 s/t/g
Image Sensor	1/2.8" Sony Starvis
Sensor resolution	5M
Optical Type	fixed
Optics	2,8mm
Zoom	-
Viewing angle	107°
Night Vision	In color
Starlight	Yes
Number of leds	2
Led type	White LED
Led range	25m
Stream type	1/2/3
Main stream	2592*1944@30fps
Structure	Metal
Vandal-Proof	No
Joint	3 assi
Junction box	Cod. 67.3790.03
RJ45 port	10/100
Standard POE	IEEE 802.3af
Power supply	12VDC - 1A
Protection degree	IP 67
Operating temperature	-10° ~ +60°C
Dimensions	175x72x66mm
Weight	700g

Sensor + chipset	IMX335 + RV1109
Main stream 2	2560*1440@30fps
Sub stream 1	1280*720@30fps
TriStream	1280*720@30fps 720*480@30fps 352*288@30fps
DHCP	Supported
Network standard	TCP/IP, ICMP, HTTP, HTTPS, FTP, DHCP, DNS, DDNS, RTP, RTSP, RTCP, PPPoE, NTP, UPnP, SMTP, UDP
P2P	BitVision
Supported browsers	IE 8-11, Chrome, Firefox, Safari
FOV	H 107° / V 55° / D 127°
Pan - Tilt	No
IR CUT	Yes
IR Filter	Auto
Min Illumination	0,01Lux
Smart functions	Face recognition, intrusion detection, video black out warning
Additional functions	Multilingual, Privacy mask, defog


compatible with:

- 67.3811.50 - NVR 4 CHANNELS 4K
- 67.3811.60 - NVR 8 CHANNELS 4K
- 67.3811.70 - NVR 16 CHANNELS 4K

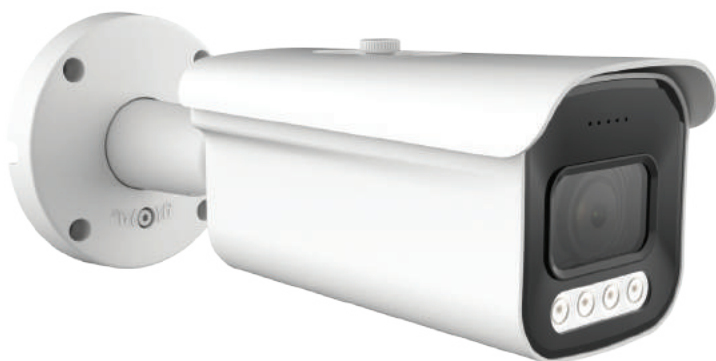


8 023389 763887

Master Carton
Quantity: 20 pcs

IP POE BULLET CAMERA 2M SONY STARVIS ZOOM AF FULL COLOR

IP POE Bullet Camera with 2M 1 / 2.8" Sony Starvis CMOS sensor and video resolution 1920x1080 pixels, motorized lens with 2.7-13.5mm AF and night vision up to 40m in color using FULL COLOR technology thanks to 4 WHITE LEDs . Metal structure also suitable for outdoor use. Onvif compatible and Bitvision P2P app, additional adjustments via web interface. Power supply with POE standard IEEE 802.3af or 12VDC 1A.



2MP

ONVIF

AF MOTOR ZOOM

HD 1080p

NIGHT VISION 40m

MOTOR LENS 2.7-13.5

POE

WEATHER PROOF

24/7 LED LIGHT

METAL



Code	67.3787.45/F
Technology	IP POE
Typology	Bullet
Video resolution	1920x1080pixel
Frame rate	25fps
Video encoding	H.265+
Onvif	2.4 s/t/g
Image Sensor	1/2.8" Sony Starvis
Sensor resolution	2M
Optical Type	Motorized AF
Optics	2,7-13,5mm
Zoom	5x
Viewing angle	103°
Night Vision	In color
Starlight	Yes
Number of leds	4
Led type	White LED
Led range	40m
Stream type	1/2/3
Main stream	2304*1296@25fps
Structure	Metal
Vandal-Proof	No
Joint	3 assi
Junction box	Cod. 67.3790.05
RJ45 port	10/100
Standard POE	IEEE 802.3af
Power supply	12VDC - 1A
Protection degree	IP 67
Operating temperature	-10° ~ +60°C
Dimensions	93x91x263mm
Weight	1200g

Sensor + chipset	IMX307 + RV1109
Main stream 2	1920*1080@30fps
Sub stream 1	1280*720@30fps
TriStream	1280*720@30fps 720*480@30fps 352*288@30fps
DHCP	Supported
Network standard	TCP/IP, ICMP, HTTP, HTTPS, FTP, DHCP, DNS, DDNS, RTP, RTSP, RTCP ,PPPoE, NTP, UPnP, SMTP, UDP
P2P	BitVision
Supported browsers	IE 8-11, Chrome, Firefox , Safari
FOV	H 103° - 29° / V 54° - 16° / D 124° - 33°
Pan - Tilt	No
IR CUT	Yes
IR Filter	Auto
Min Illumination	0,005Lux
Smart functions	Face recognition, intrusion detection, video black out warning
Additional functions	Multilingual, Privacy mask, defog



compatible with:

- 67.3811.50 - NVR 4 CHANNELS 4K
- 67.3811.60 - NVR 8 CHANNELS 4K
- 67.3811.70 - NVR 16 CHANNELS 4K

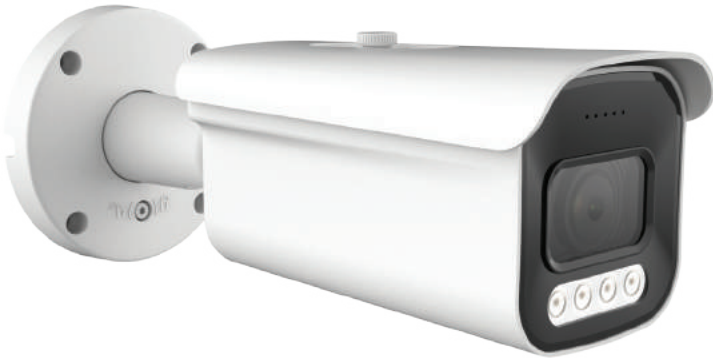


8 023389 763894

Master Carton
Quantity: 12 pcs

IP POE BULLET CAMERA 5M SONY STARVIS ZOOM AF FULL COLOR

IP POE Bullet Camera with 5M 1 / 2.8" Sony Starvis CMOS sensor and video resolution 2592x1944 pixels, motorized lens with 2.7-13.5mm AF and night vision up to 40m in color using FULL COLOR technology thanks to 4 WHITE LEDs. Metal structure also suitable for outdoor use. Onvif compatible and Bitvision P2P app, additional adjustments via web interface. Power supply with POE standard IEEE 802.3af or 12VDC 1A.



Code	67.3787.50/F
Technology	IP POE
Typology	Bullet
Video resolution	2592x1944pixel
Frame rate	30fps
Video encoding	H.265+
Onvif	2.4 s/t/g
Image Sensor	1/2.8" Sony Starvis
Sensor resolution	5M
Optical Type	Motorized AF
Optics	2,7-13,5mm
Zoom	5x
Viewing angle	103°
Night Vision	In color
Starlight	Yes
Number of leds	4
Led type	White LED
Led range	40m
Stream type	1/2/3
Main stream	2592*1944@30fps
Structure	Metal
Vandal-Proof	No
Joint	3 assi
Junction box	Cod. 67.3790.05
RJ45 port	10/100
Standard POE	IEEE 802.3af
Power supply	12VDC - 1A
Protection degree	IP 67
Operating temperature	-10° ~ +60°C
Dimensions	93x91x263mm
Weight	1200g

Sensor + chipset	IMX335 + RV1109
Main stream 2	2560*1440@30fps
Sub stream 1	1280*720@30fps
TriStream	1280*720@30fps 720*480@30fps 352*288@30fps
DHCP	Supported
Network standard	TCP/IP, ICMP, HTTP, HTTPS, FTP, DHCP, DNS, DDNS, RTP, RTSP, RTCP, PPPoE, NTP, UPnP, SMTP, UDP
P2P	BitVision
Supported browsers	IE 8-11, Chrome, Firefox, Safari
FOV	H 103° - 29° / V 54° - 16° / D 124° - 33°
Pan - Tilt	No
IR CUT	Yes
IR Filter	Auto
Min Illumination	0,01Lux
Smart functions	Face recognition, intrusion detection, video black out warning
Additional functions	Multilingual, Privacy mask, defog



compatible with:

- 67.3811.50 - NVR 4 CHANNELS 4K
- 67.3811.60 - NVR 8 CHANNELS 4K
- 67.3811.70 - NVR 16 CHANNELS 4K



8 023389 763900

Master Carton
Quantity: 12 pcs

IP POE DOME CAMERA 2M SONY STARVIS 2,8mm FULL COLOR

IP POE Dome Camera with 2M 1 / 2.8 "Sony Starvis CMOS sensor and video resolution 1920x1080 pixels, 2.8mm fixed lens and night vision up to 25m in color using FULL COLOR technology thanks to 2 WHITE LEDs. Vandal proof metal structure for outdoors. Onvif compatible and Bitvision P2P app, additional adjustments via web interface. Power supply with POE standard IEEE 802.3af or 12VDC 1A



Code	67.3787.60/F
Technology	IP POE
Typology	Dome
Video resolution	1920x1080pixel
Frame rate	25fps
Video encoding	H.265+
Onvif	2.4 s/t/g
Image Sensor	1/2.8" Sony Starvis
Sensor resolution	2M
Optical Type	fixed
Optics	2,8mm
Zoom	-
Viewing angle	107°
Night Vision	In color
Starlight	Yes
Number of leds	2
Led type	White LED
Led range	25m
Stream type	1/2/3
Main stream	2304*1296@25fps
Structure	Metal
Vandal-Proof	Yes
Joint	No
Junction box	Cod. 67.3790.03
RJ45 port	10/100
Standard POE	IEEE 802.3af
Power supply	12VDC - 1A
Protection degree	IP 67
Operating temperature	-10° ~ +60°C
Dimensions	Ø96x91mm
Weight	600g

Sensor + chipset	IMX307 + RV1109
Main stream 2	1920*1080@30fps
Sub stream 1	1280*720@30fps
TriStream	1280*720@30fps 720*480@30fps 352*288@30fps
DHCP	Supported
Network standard	TCP/IP, ICMP, HTTP, HTTPS, FTP, DHCP, DNS, DDNS, RTP, RTSP, RTCP, PPPoE, NTP, UPnP, SMTP, UDP
P2P	BitVision
Supported browsers	IE 8-11, Chrome, Firefox, Safari
FOV	H 107° / V 55° / D 127°
Pan - Tilt	No
IR CUT	Yes
IR Filter	Auto
Min Illumination	0,005Lux
Smart functions	Face recognition, intrusion detection, video black out warning
Additional functions	Multilingual, Privacy mask, defog



compatible with:

- 67.3811.50 - NVR 4 CHANNELS 4K
- 67.3811.60 - NVR 8 CHANNELS 4K
- 67.3811.70 - NVR 16 CHANNELS 4K



8 023389 763962

Master Carton
Quantity: 45 pcs

IP POE DOME CAMERA 5M SONY STARVIS 2,8mm FULL COLOR

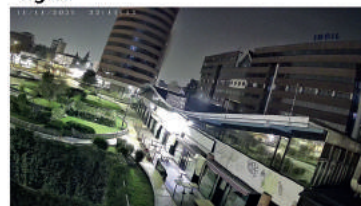
IP POE Dome Camera with 5M 1 / 2.8 "Sony Starvis CMOS sensor and video resolution 2592x1944 pixel, 2.8mm fixed lens and night vision up to 25m in color using FULL COLOR technology thanks to 2 WHITE LEDs. Vandal proof metal structure for outdoors. Onvif compatible and Bitvision P2P app, additional adjustments via web interface. Power supply with POE standard IEEE 802.3af or 12VDC 1A.



Code	67.3787.65/F
Technology	IP POE
Typology	Dome
Video resolution	2592x1944pixel
Frame rate	30fps
Video encoding	H.265+
Onvif	2.4 s/t/g
Image Sensor	1/2.8" Sony Starvis
Sensor resolution	5M
Optical Type	fixed
Optics	2,8mm
Zoom	-
Viewing angle	107°
Night Vision	In color
Starlight	Yes
Number of leds	2
Led type	White LED
Led range	25m
Stream type	1/2/3
Main stream	2592*1944@30fps
Structure	Metal
Vandal-Proof	Yes
Joint	No
Junction box	Cod. 67.3790.03
RJ45 port	10/100
Standard POE	IEEE 802.3af
Power supply	12VDC - 1A
Protection degree	IP 67
Operating temperature	-10° ~ +60°C
Dimensions	Ø96x91mm
Weight	600g

Sensor + chipset	IMX335 + RV1109
Main stream 2	2560*1440@30fps
Sub stream 1	1280*720@30fps
TriStream	1280*720@30fps 720*480@30fps 352*288@30fps
DHCP	Supported
Network standard	TCP/IP, ICMP, HTTP, HTTPS, FTP, DHCP, DNS, DDNS, RTP, RTSP, RTCP, PPPoE, NTP, UPnP, SMTP, UDP
P2P	BitVision
Supported browsers	IE 8-11, Chrome, Firefox, Safari
FOV	H 107° / V 55° / D 127°
Pan - Tilt	No
IR CUT	Yes
IR Filter	Auto
Min Illumination	0,01Lux
Smart functions	Face recognition, intrusion detection, video black out warning
Additional functions	Multilingual, Privacy mask, defog

day

night

compatible with:

- 67.3811.50 - NVR 4 CHANNELS 4K
- 67.3811.60 - NVR 8 CHANNELS 4K
- 67.3811.70 - NVR 16 CHANNELS 4K



8 023389 763979

 Master Carton
Quantity: 45 pcs

IP POE DOME CAMERA 2M SONY STARVIS ZOOM AF FULL COLOR

IP POE Dome Camera with 2M 1 / 2.8" Sony Starvis CMOS sensor and video resolution 1920x1080 pixels, motorized lens with 2.7-13.5mm AF and night vision up to 25m in color using FULL COLOR technology thanks to 2 WHITE LEDs . Vandal proof metal structure for outdoors. Onvif compatible and Bitvision P2P app, additional adjustments via web interface. Power supply with POE standard IEEE 802.3af or 12VDC 1A.



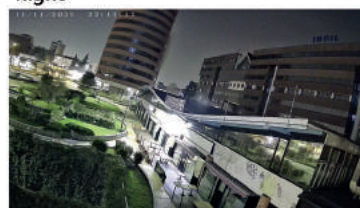
Code	67.3787.80/F
Technology	IP POE
Typology	Dome
Video resolution	1920x1080pixel
Frame rate	25fps
Video encoding	H.265+
Onvif	2.4 s/t/g
Image Sensor	1/2.8" Sony Starvis
Sensor resolution	2M
Optical Type	Motorized AF
Optics	2,7-13,5mm
Zoom	5x
Viewing angle	103°
Night Vision	In color
Starlight	Yes
Number of leds	2
Led type	White LED
Led range	25m
Stream type	1/2/3
Main stream	2304*1296@25fps
Structure	Metal
Vandal-Proof	Yes
Joint	No
Junction box	Cod. 67.3790.05
RJ45 port	10/100
Standard POE	IEEE 802.3af
Power supply	12VDC - 1A
Protection degree	IP 67
Operating temperature	-10° ~ +60°C
Dimensions	Ø115x113mm
Weight	800g

Sensor + chipset	IMX307 + RV1109
Main stream 2	1920*1080@30fps
Sub stream 1	1280*720@30fps
TriStream	1280*720@30fps 720*480@30fps 352*288@30fps
DHCP	Supported
Network standard	TCP/IP, ICMP, HTTP, HTTPS, FTP, DHCP, DNS, DDNS, RTP, RTSP, RTCP, PPPoE, NTP, UPnP, SMTP, UDP
P2P	BitVision
Supported browsers	IE 8-11, Chrome, Firefox, Safari
FOV	H 103° - 29° / V 54° - 16° / D 124° - 33°
Pan - Tilt	No
IR CUT	Yes
IR Filter	Auto
Min Illumination	0,005Lux
Smart functions	Face recognition, intrusion detection, video black out warning
Additional functions	Multilingual, Privacy mask, defog

day



night



compatible with:

- 67.3811.50 - NVR 4 CHANNELS 4K
- 67.3811.60 - NVR 8 CHANNELS 4K
- 67.3811.70 - NVR 16 CHANNELS 4K



8 023389 763993

Master Carton
Quantity: 20 pcs

IP POE DOME CAMERA 5M SONY STARVIS ZOOM AF FULL COLOR

IP POE Dome Camera with 5M 1 / 2.8" Sony Starvis CMOS sensor and video resolution 2592x1944 pixels, motorized lens with 2.7-13.5mm AF and night vision up to 25m in color using FULL COLOR technology thanks to 2 WHITE LEDs. Vandal proof metal structure for outdoors. Onvif compatible and Bitvision P2P app, additional adjustments via web interface. Power supply with POE standard IEEE 802.3af or 12VDC 1A.



Code	67.3787.85/F
Technology	IP POE
Typology	Dome
Video resolution	2592x1944pixel
Frame rate	30fps
Video encoding	H.265+
Onvif	2.4 s/t/g
Image Sensor	1/2.8" Sony Starvis
Sensor resolution	5M
Optical Type	Motorized AF
Optics	2,7-13,5mm
Zoom	5x
Viewing angle	103°
Night Vision	In color
Starlight	Yes
Number of leds	2
Led type	White LED
Led range	25m
Stream type	1/2/3
Main stream	2592*1944@30fps
Structure	Metal
Vandal-Proof	Yes
Joint	No
Junction box	Cod. 67.3790.05
RJ45 port	10/100
Standard POE	IEEE 802.3af
Power supply	12VDC - 1A
Protection degree	IP 67
Operating temperature	-10° ~ +60°C
Dimensions	Ø115x113mm
Weight	800g

Sensor + chipset	IMX335 + RV1109
Main stream 2	2560*1440@30fps
Sub stream 1	1280*720@30fps
TriStream	1280*720@30fps 720*480@30fps 352*288@30fps
DHCP	Supported
Network standard	TCP/IP, ICMP, HTTP, HTTPS, FTP, DHCP, DNS, DDNS, RTP, RTSP, RTCP, PPPoE, NTP, UPnP, SMTP, UDP
P2P	BitVision
Supported browsers	IE 8-11, Chrome, Firefox, Safari
FOV	H 103° - 29° / V 54° - 16° / D 124° - 33°
Pan - Tilt	No
IR CUT	Yes
IR Filter	Auto
Min Illumination	0,01Lux
Smart functions	Face recognition, intrusion detection, video black out warning
Additional functions	Multilingual, Privacy mask, defog


compatible with:

- 67.3811.50 - NVR 4 CHANNELS 4K
- 67.3811.60 - NVR 8 CHANNELS 4K
- 67.3811.70 - NVR 16 CHANNELS 4K



8 023389 764013

Master Carton
Quantity: 20 pcs



ACCESSORIES



HDD WD PURPLE 3,5" 1TB - WD10PURZ



Code	59.5901.00
Type	Internal HDD
Format	3.5"
Capacity	1TB
Interface	Sata III
Interface speed	6Gb/s
Data transfer rate	150MBps
Rotation speed	5400rpm
Cache	64MB
Usage	Video surveillance Pro
Size	100x26x147mm
Weight	450g

HDD WD PURPLE 3,5" 2TB - WD22PURZ



Code	59.5901.01
Type	Internal HDD
Format	3.5"
Capacity	2TB
Interface	Sata III
Interface speed	6Gb/s
Data transfer rate	150MBps
Rotation speed	5400rpm
Cache	256MB
Usage	Video surveillance Pro
Size	100x26x147mm
Weight	450g

HDD WD PURPLE 3,5" 4TB - WD40PURZ



Code	59.5901.02
Type	Internal HDD
Format	3.5"
Capacity	4TB
Interface	Sata III
Interface speed	6Gb/s
Data transfer rate	150MBps
Rotation speed	5400rpm
Cache	64MB
Usage	Video surveillance Pro
Size	100x26x147mm
Weight	600g



HDD SEAGATE 3,5" 1TB - ST1000DM010



Code	59.5900.16
Type	Internal HDD
Format	3.5"
Capacity	1TB
Interface	Sata III
Interface speed	6Gb/s
Data transfer rate	210MBps
Rotation speed	7200rpm
Cache	64MB
Usage	PC/Video surveillance
Size	102x20x147mm
Weight	400g

HDD SEAGATE 3,5" 2TB - ST2000DM008



Code	59.5900.19
Type	Internal HDD
Format	3.5"
Capacity	2TB
Interface	Sata III
Interface speed	6Gb/s
Data transfer rate	220MBps
Rotation speed	7200rpm
Cache	256MB
Usage	PC/Video surveillance
Size	102x20x147mm
Weight	490g

HDD SEAGATE 3,5" 3TB - ST3000DM007



Code	59.5900.20
Type	Internal HDD
Format	3.5"
Capacity	3TB
Interface	Sata III
Interface speed	6Gb/s
Data transfer rate	185MBps
Rotation speed	5400rpm
Cache	256MB
Usage	PC/Video surveillance
Size	102x20x147mm
Weight	490g

POWER SUPPLIES

FLUSH-MOUNTED POWER SUPPLY 12V 1.3A IP67



Code	34.0110.05
Input voltage	100-240Vac
Output voltage	12Vdc
Max output current	1.3A
Max power	15W
Ripple	250mVp-p
Technology	Switching
Input connection	Cabled
Output connection	5.5x2.1mm plug
Polarity	Central positive
Input cable length	1.2m

Output cable length	1.15m
Protection degree	IP67
Insulation class	II
Protection	Short circuit - overload - over voltage
Additional functions	-
Working temperature	-10°C ~ 40°C
Material	Plastic
Color	black
Dimensions	51x49x25mm
Weight	96g

FLUSH-MOUNTED POWER SUPPLY 5V 1A IP67



Code	34.0110.07
Input voltage	100-240Vac
Output voltage	5Vdc
Max output current	1A
Max power	5W
Ripple	100mVp-p
Technology	Switching
Input connection	Cabled
Output connection	Micro USB plug
Polarity	Central positive
Input cable length	1.2m

Output cable length	1.15m
Protection degree	IP67
Insulation class	II
Protection	Short circuit - overload - over voltage
Additional functions	-
Working temperature	-10°C ~ 40°C
Material	Plastic
Color	black
Dimensions	51x49x25mm
Weight	96g

GRILLED POWER SUPPLY 15W 12V



Code	34.0113.10
Input voltage	100-240Vac
Output voltage	12Vdc
Output current	1.25A
Power	15W
Ripple	-mVp-p
Technology	Switching
Input connection	Cabled
Output connection	screw terminals
Polarity	-
Protection degree	IP20

Insulation class	-
Protection	-
Additional functions	-
Working temperature	-10°C ~ 40°C
Material	Metal
Color	Silver
Dimensions	48x20x80mm
Weight	90g
Packaging	Box

12V 1A POWER SUPPLY



Code	34.0115.45
Input voltage	100-240Vac
Output voltage	12Vdc
Max output current	1A
Max power	12W
Ripple	120mVp-p
Technology	Switching
Input connection	Spina EU
Output connection	5.5x2.5-2.1mm plug
Polarity	Central positive
Input cable length	-

Output cable length	1m
Protection degree	IP20
Insulation class	II
Protection	Short circuit - overload - over voltage
Additional functions	-
Working temperature	-20°C ~ 50°C
Material	Plastic
Color	black
Dimensions	63.5x28.5x76mm
Weight	73g

12V 2A POWER SUPPLY



Code	34.0115.46
Input voltage	100-240Vac
Output voltage	12Vdc
Max output current	2A
Max power	24W
Ripple	120mVp-p
Technology	Switching
Input connection	Spina EU
Output connection	5.5x2.5-2.1mm plug
Polarity	Central positive
Input cable length	-

Output cable length	1m
Protection degree	IP20
Insulation class	II
Protection	Short circuit - overload - over voltage
Additional functions	-
Working temperature	-20°C ~ 50°C
Material	Plastic
Color	black
Dimensions	76x43x32mm
Weight	120g

12V 3A POWER SUPPLY



Code	34.0116.09
Input voltage	100-240Vac
Output voltage	12Vdc
Max output current	3A
Max power	36W
Ripple	200mVp-p
Technology	Switching
Input connection	Spina EU
Output connection	5.5x2.5mm-5.5x2.1mm plugs
Polarity	Central positive
Input cable length	1.2m

Output cable length	1.15m
Protection degree	IP20
Insulation class	II
Protection	Short circuit - overload - over voltage
Additional functions	-
Working temperature	0°C ~ 50°C
Material	Plastic
Color	black
Dimensions	114x50x28mm
Weight	230g

12V 5A POWER SUPPLY



Code	34.0116.13
Input voltage	100-240Vac
Output voltage	12Vdc
Max output current	5A
Max power	60W
Ripple	200mVp-p
Technology	Switching
Input connection	Spina EU
Output connection	5.5x2.5mm-5.5x2.1mm plugs
Polarity	Central positive
Input cable length	1.2m

Output cable length	1.15m
Protection degree	IP20
Insulation class	II
Protection	Short circuit - overload - over voltage
Additional functions	-
Working temperature	0°C ~ 50°C
Material	Plastic
Color	black
Dimensions	130x56x30mm
Weight	260g

POWER SUPPLY 12V 7A



Code	34.0116.15
Input voltage	100-240Vac
Output voltage	12Vdc
Max output current	7A
Max power	84W
Ripple	200mVp-p
Technology	Switching
Input connection	Spina EU
Output connection	5.5x2.5mm-5.5x2.1mm plugs
Polarity	Central positive
Input cable length	1.2m

Output cable length	1.15m
Protection degree	IP20
Insulation class	II
Protection	Short circuit - overload - over voltage
Additional functions	-
Working temperature	0°C ~ 50°C
Material	Plastic
Color	black
Dimensions	130x56x30mm
Weight	300g

12V 12A POWER SUPPLY



Code	34.0116.11
Input voltage	100-240Vac
Output voltage	12Vdc
Max output current	12A
Max power	144W
Ripple	200mVp-p
Technology	Switching
Input connection	Spina EU
Output connection	5.5x2.5mm-5.5x2.1mm plugs
Polarity	Central positive
Input cable length	1.2m

Output cable length	1.15m
Protection degree	IP20
Insulation class	II
Protection	Short circuit - overload - over voltage
Additional functions	-
Working temperature	0°C ~ 50°C
Material	Plastic
Color	black
Dimensions	190x63x40mm
Weight	398g

POWER SPLITTER CABLE dc



Code	67.3750.52
Connector A	DC plug 5.5x2.1
Connector B	DC 5.5x2.1 socket
Cable length	30cm
No. of outputs	4
Maximum voltage	-
Maximum current	-
Color	black

POWER SPLITTER CABLE dc



Code	67.3750.54
Connector A	DC plug 5.5x2.1
Connector B	DC 5.5x2.1 socket
Cable length	30cm
No. of outputs	8
Maximum voltage	-
Maximum current	-
Color	black

ADAPTERS

DC 5.5x2.1A SOCKET ADAPTER TERMINALS



Code	67.3750.69/S
Type	Power supply
Connector A	DC socket
Connector B	2-pole terminal
External dimension	5.5mm
Internal dimension	2.1mm
mounting	On the cable
Cable fixing	screw
Orientation	Straight
Material	Nickel plated brass

DC 5.5x2.1A PLUG ADAPTER TERMINALS



Code	67.3750.72/S
Type	Power supply
Connector A	DC plug
Connector B	2-pole terminal
External dimension	5.5mm
Internal dimension	2.1mm
mounting	On the cable
Cable fixing	screw
Orientation	Straight
Material	Nickel plated brass

DC 5.5x2.5 SOCKET ADAPTER TO TERMINALS



Code	67.3750.73/S
Type	Power supply
Connector A	DC socket
Connector B	2-pole terminal
External dimension	5.5mm
Internal dimension	2.5mm
mounting	On the cable
Cable fixing	screw
Orientation	Straight
Material	Nickel plated brass

DC 5.5x2.5 PLUG ADAPTER TO TERMINALS



Code	67.3750.74/S
Type	Power supply
Connector A	DC plug
Connector B	2-pole terminal
External dimension	5.5mm
Internal dimension	2.5mm
mounting	On the cable
Cable fixing	screw
Orientation	Straight
Material	Nickel plated brass

BNC PLUG TO TERMINAL ADAPTER



Code	67.3750.75/S
Type	BNC
Connector A	BNC plug
Connector B	2-pole terminal
Cable type	RG59
mounting	On the cable
Cable fixing	screw
Orientation	Straight
Material	Nickel plated brass
Insulation	PTFE

TERMINAL BNC SOCKET ADAPTER



Code	67.3750.76/S
Type	BNC
Connector A	Preso BNC
Connector B	2-pole terminal
Cable type	RG59
mounting	On the cable
Cable fixing	screw
Orientation	Straight
Material	Nickel plated brass
Insulation	PTFE

RCA PLUG TO TERMINAL ADAPTER



Code	67.3750.77/S
Type	RCA
Connector A	RCA plug
Connector B	2-pole terminal
Cable type	RG59
mounting	On the cable
Cable fixing	screw
Orientation	Straight
Material	Nickel plated brass
Insulation	-

TERMINAL RCA SOCKET ADAPTER



Code	67.3750.78/S
Type	RCA
Connector A	Rca socket
Connector B	2-pole terminal
Cable type	RG59
mounting	On the cable
Cable fixing	screw
Orientation	Straight
Material	Nickel plated brass
Insulation	-

RJ45 PLUG TO TERMINALS ADAPTER



Code	59.6622.90
Type	RJ45
Connector	RJ45 plug
Cat.	6
Shielding	FTP
Outputs	8P8C
gilding	3u
fixing	Screw terminal
N°Pin	8
Cable type	Round - Flat
Cable structure	Rigid and stranded
mounting	On the cable
Orientation	Straight
Material	Polycarbonate
Color	black

BNC PLUG TO PUSH TERMINALS ADAPTER



Code	67.3751.00
Type	BNC
Connector A	BNC plug
Connector B	2-pole terminal
Cable type	RG59
mounting	On the cable
Cable fixing	Spring loaded
Orientation	Straight
Material	Nickel plated brass
Insulation	PTFE

DC 5.5x2.1A PLUG ADAPTER PUSH TERMINALS



Code	67.3751.05
Type	Power supply
Connector A	DC plug
Connector B	2-pole terminal
External dimension	5.5mm
Internal dimension	2.1mm
mounting	On the cable
Cable fixing	Spring loaded
Orientation	Straight
Material	Nickel plated brass

DC 5.5x2.1A SOCKET ADAPTER PUSH TERMINALS



Code	67.3751.10
Type	Power supply
Connector A	DC socket
Connector B	2-pole terminal
External dimension	5.5mm
Internal dimension	2.1mm
mounting	On the cable
Cable fixing	Spring loaded
Orientation	Straight
Material	Nickel plated brass

BNC SCREW PLUG WITH CABLE GUIDE



Code	30.2840.00
Type	BNC
Connector	BNC plug
Impedance	75ohm
Cable type	RG59
mounting	On the cable
Cable fixing	screw
Orientation	Straight
Material	Nickel plated brass
Insulation	PTFE
cable guide	PVC

BNC PLUG TO CRIMP RG59



Code	30.2892.02
Type	BNC
Connector	BNC plug
Impedance	75ohm
Cable type	RG59
mounting	On the cable
Cable fixing	To crimp
Orientation	Straight
Material	Nickel plated brass
Insulation	PTFE
cable guide	No

RJ45 PLUG CAT.5E UTP 3μ



Code	59.9600.16
Type	RJ45
Connector	RJ45 plug
Cat.	5e
Shielding	UTP
Outputs	8P8C
gilding	3u
fixing	To crimp
N°Pin	8
Cable type	Round
Cable structure	Rigid and stranded
mounting	On the cable
Orientation	Straight
Material	Polycarbonate
Color	Transparent

RJ45 PLUG CAT.5E UTP 50μ



Code	59.9600.17
Type	RJ45
Connector	RJ45 plug
Cat.	5e
Shielding	UTP
Outputs	8P8C
gilding	50u
fixing	To crimp
N°Pin	8
Cable type	Round
Cable structure	Rigid and stranded
mounting	On the cable
Orientation	Straight
Material	Polycarbonate
Color	Transparent

RJ45 PLUG CAT.5E FTP 50μ



Code	59.9600.18
Type	RJ45
Connector	RJ45 plug
Cat.	5e
Shielding	FTP
Outputs	8P8C
gilding	50u
fixing	To crimp
N°Pin	8
Cable type	Round
Cable structure	Rigid and stranded
mounting	On the cable
Orientation	Straight
Material	Polycarbonate
Color	Transparent

RJ45 PLUG CAT.6 UTP 50μ



Code	59.9600.19
Type	RJ45
Connector	RJ45 plug
Cat.	6
Shielding	UTP
Outputs	8P8C
gilding	50u
fixing	To crimp
N°Pin	8
Cable type	Round
Cable structure	Rigid and stranded
mounting	On the cable
Orientation	Straight
Material	Polycarbonate
Color	Transparent

RJ45 CAT.6 FTP 50μ PLUG



Code	59.9600.20
Type	RJ45
Connector	RJ45 plug
Cat.	6
Shielding	FTP
Outputs	8P8C
gilding	50u
fixing	To crimp
N°Pin	8
Cable type	Round
Cable structure	Rigid and stranded
mounting	On the cable
Orientation	Straight
Material	Polycarbonate
Color	Transparent



PROTECTIVE SHEATH FOR RJ45 PLUG



Code	59.9610.10	59.9610.11	59.9610.12	59.9610.13	59.9610.14	59.9610.15
Type	RJ45	RJ45	RJ45	RJ45	RJ45	RJ45
Color	Grey	black	Red	Green	Yellow	Blue
Cable type	Round	Round	Round	Round	Round	Round
Structure	Crease protection	Crease protection	Crease protection	Crease protection	Crease protection	Crease protection
Material	PVC	PVC	PVC	PVC	PVC	PVC

CONNECTORS

RJ45 CAT.6 UTP PASS-THROUGH PLUG



Code	59.9600.21
Type	RJ45
Connector	RJ45 plug
Cat.	6
Shielding	UTP
Outputs	8P8C
gilding	50u
fixing	To crimp
N°Pin	8
Cable type	Round
Cable structure	Rigid and stranded
mounting	On the cable
Orientation	Straight
Material	Polycarbonate
Color	Transparent

RJ45 CAT.6 FTP THROUGH PLUG



Code	59.9600.22
Type	RJ45
Connector	RJ45 plug
Cat.	6
Shielding	FTP
Outputs	8P8C
gilding	50u
fixing	To crimp
N°Pin	8
Cable type	Round
Cable structure	Rigid and stranded
mounting	On the cable
Orientation	Straight
Material	Polycarbonate
Color	Transparent

RJ45 PLUG CAT.5E UTP TOOL-LESS



Code	59.9620.00
Type	RJ45
Connector	RJ45 plug
Cat.	5e
Shielding	UTP
Outputs	8P8C
gilding	3u
fixing	Toolless
N°Pin	8
Cable type	Round
Cable structure	Rigid and stranded
mounting	On the cable
Orientation	Straight
Material	Plastic
Color	Grey

RJ45 PLUG CAT.6 UTP TOOL-LESS



Code	59.9620.50
Type	RJ45
Connector	RJ45 plug
Cat.	6
Shielding	UTP
Outputs	8P8C
gilding	3u
fixing	Toolless
N°Pin	8
Cable type	Round
Cable structure	Rigid and stranded
mounting	On the cable
Orientation	Straight
Material	Plastic
Color	Grey

RJ45 SOCKET TO RJ45 CAT5E UTP SOCKET ADAPTER



Code	67.9000.32
Type	RJ45
Connector A	RJ45 socket
Connector B	RJ45 socket
Shielding	UTP
Outputs	8P8C
gilding	3u
fixing	-
N°Pin	8
Cable type	-
Cable structure	-
mounting	Pin to Pin
Orientation	Straight
Material	ABS
Color	ivory

RJ45 SOCKET TO RJ45 CAT6 FTP SOCKET ADAPTER



Code	67.9000.39
Type	RJ45
Connector A	RJ45 socket
Connector B	RJ45 socket
Shielding	FTP
Outputs	8P8C
gilding	3u
fixing	-
N°Pin	8
Cable type	-
Cable structure	-
mounting	Pin to Pin
Orientation	Straight
Material	Nickel
Color	Silver

RJ45 KEYSTONE CAT6 UTP SOCKET



Code	59.6323.45
Cat.	6
Shielding	UTP
Poles	8P8C
Material	Plastic
Contacts	pressure

RJ45 SOCKET KEYSTONE TOOLLESS CAT. 6A STP



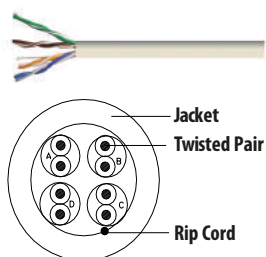
Code	59.6323.50
Cat.	6A
Shielding	STP
Standard	TIA / EIA 568 A & B
Coating	Zinc alloy
Casing	Polycarbonate
Contacts	Bronze

RJ45 KEYSTONE TOOLLESS CAT. 6



Code	59.6323.40
Connectors	RJ45 socket - RJ45 socket

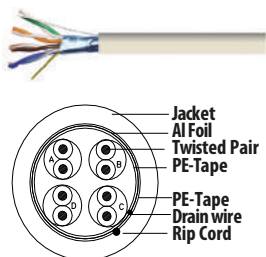
NETWORK CABLE CAT.5E UTP CCA



Code	59.6623.00
Cat.	5e
Conductor	CCA
Shielding	UTP
Shielding material	-
Section	24AWG
Conductor diameter	0.5mm
Sheath	PVC
Outer diameter	5.0mm
Length	305m

CPR class	Eca
Standard	TIA / EIA 568B
Cable type	Rigid
Band	100MHz
Impedance	100Ω
Speed	10/100Mbps
Marking on the cable	every meter
Color	White
Packaging	Box

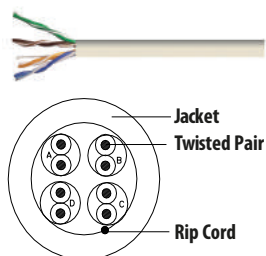
NETWORK CABLE CAT.5E FTP CCA



Code	59.6623.05
Cat.	5e
Conductor	CCA
Shielding	FTP
Shielding material	Aluminum / PE foil with ground wire
Section	24AWG
Conductor diameter	0.5mm
Sheath	PVC
Outer diameter	5.8mm
Length	305m

CPR class	Eca
Standard	TIA / EIA 568B
Cable type	Rigid
Band	100MHz
Impedance	100Ω
Speed	10/100Mbps
Marking on the cable	every meter
Color	White
Packaging	Box

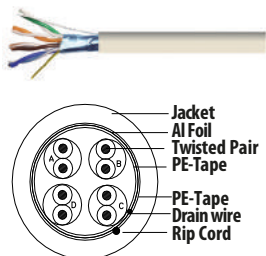
NETWORK CABLE CAT.5E UTP COPPER



Code	59.6623.10
Cat.	5e
Conductor	Copper
Shielding	UTP
Shielding material	-
Section	24AWG
Conductor diameter	0.48mm
Sheath	PVC
Outer diameter	4.9mm
Length	305m

CPR class	Eca
Standard	TIA / EIA 568B
Cable type	Rigid
Band	100MHz
Impedance	100Ω
Speed	10/100Mbps
Marking on the cable	every meter
Color	White
Packaging	Box

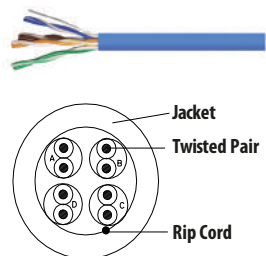
NETWORK CABLE CAT.5E FTP COPPER



Code	59.6623.15
Cat.	5e
Conductor	Copper
Shielding	FTP
Shielding material	Aluminum / PE foil with ground wire
Section	24AWG
Conductor diameter	0.48mm
Sheath	PVC
Outer diameter	5.5mm
Length	305m

CPR class	Eca
Standard	TIA / EIA 568B
Cable type	Rigid
Band	100MHz
Impedance	100Ω
Speed	10/100Mbps
Marking on the cable	every meter
Color	White
Packaging	Box

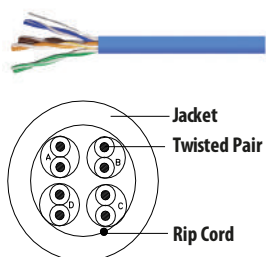
NETWORK CABLE CAT.5E UTP CCA LSZH



Code	59.6623.20
Cat.	5e
Conductor	CCA
Shielding	UTP
Shielding material	-
Section	24AWG
Conductor diameter	0.5mm
Sheath	LSZH
Outer diameter	5.0mm
Length	305m

CPR class	Eca
Standard	TIA / EIA 568B
Cable type	Rigid
Band	100MHz
Impedance	100Ω
Speed	10/100Mbps
Marking on the cable	every meter
Color	Blue
Packaging	Box

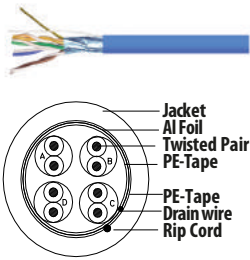
NETWORK CABLE CAT.5E UTP COPPER LSZH



Code	59.6623.25
Cat.	5e
Conductor	Copper
Shielding	UTP
Shielding material	-
Section	24AWG
Conductor diameter	0.48mm
Sheath	LSZH
Outer diameter	4.9mm
Length	305m

CPR class	Eca
Standard	TIA / EIA 568B
Cable type	Rigid
Band	100MHz
Impedance	100Ω
Speed	10/100Mbps
Marking on the cable	every meter
Color	Blue
Packaging	Box

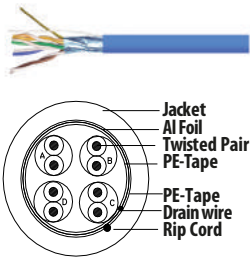
NETWORK CABLE CAT.5E FTP CCA LSZH



Code	59.6623.30
Cat.	5e
Conductor	CCA
Shielding	FTP
Shielding material	Aluminum / PE foil with ground wire
Section	24AWG
Conductor diameter	0.5mm
Sheath	LSZH
Outer diameter	5.8mm
Length	305m

CPR class	Eca
Standard	TIA / EIA 568B
Cable type	Rigid
Band	100MHz
Impedance	100Ω
Speed	10/100Mbps
Marking on the cable	every meter
Color	Blue
Packaging	Box

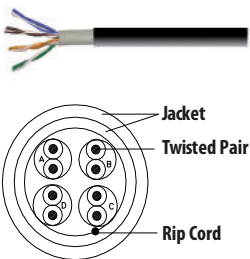
NETWORK CABLE CAT.5E FTP COPPER LSZH



Code	59.6623.35
Cat.	5e
Conductor	Copper
Shielding	FTP
Shielding material	Aluminum / PE foil with ground wire
Section	24AWG
Conductor diameter	0.48mm
Sheath	LSZH
Outer diameter	5.5mm
Length	305m

CPR class	Eca
Standard	TIA / EIA 568B
Cable type	Rigid
Band	100MHz
Impedance	100Ω
Speed	10/100Mbps
Marking on the cable	every meter
Color	Blue
Packaging	Box

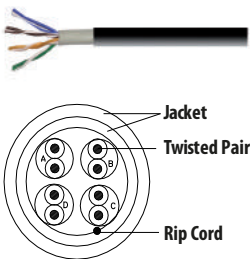
OUTDOOR NETWORK CABLE CAT.5E UTP CCA



Code	59.6623.50
CAT.	5e
Conductor	CCA
Shielding	UTP
Shielding material	-
Section	24AWG
Conductor diameter	0.5mm
Sheath	PE
Outer diameter	6mm
Length	305m

CPR class	Eca
Standard	TIA / EIA 568B
Cable type	Rigid
Band	100MHz
Impedance	100Ω
Speed	10/100Mbps
Marking on the cable	every meter
Color	black
Packaging	Wooden spool

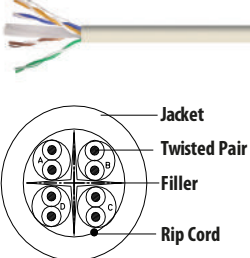
OUTDOOR NETWORK CABLE CAT.5E UTP COPPER



Code	59.6623.55
Cat.	5e
Conductor	Copper
Shielding	UTP
Shielding material	-
Section	24AWG
Conductor diameter	0.48mm
Sheath	PE
Outer diameter	5.8mm
Length	305m

CPR class	Eca
Standard	TIA / EIA 568B
Cable type	Rigid
Band	100MHz
Impedance	100Ω
Speed	10/100Mbps
Marking on the cable	every meter
Color	black
Packaging	Wooden spool

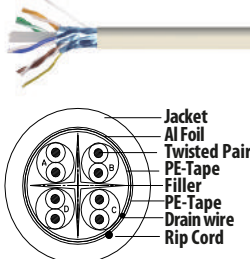
NETWORK CABLE CAT.6 UTP CCA



Code	59.6623.60
Cat.	6
Conductor	CCA
Shielding	UTP
Shielding material	-
Section	23AWG
Conductor diameter	0.57mm
Sheath	PVC
Outer diameter	6mm
Length	305m

CPR class	Eca
Standard	TIA / EIA 568B
Cable type	Rigid
Band	250MHz
Impedance	100Ω
Speed	10/100/1000Mbps
Marking on the cable	every meter
Color	White
Packaging	Box

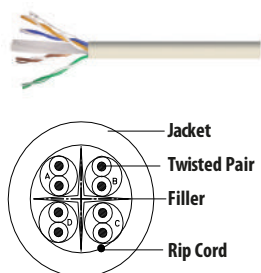
NETWORK CABLE CAT.6 FTP CCA



Code	59.6623.65
Cat.	6
Conductor	CCA
Shielding	FTP
Shielding material	Aluminum / PE foil with ground wire
Section	23AWG
Conductor diameter	0.57mm
Sheath	PVC
Outer diameter	6.8mm
Length	305m

CPR class	Eca
Standard	TIA / EIA 568B
Cable type	Rigid
Band	250MHz
Impedance	100Ω
Speed	10/100/1000Mbps
Marking on the cable	every meter
Color	White
Packaging	Box

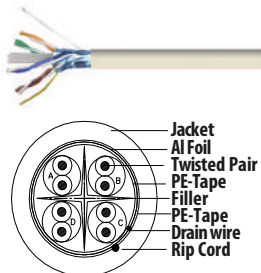
NETWORK CABLE CAT.6 UTP COPPER



Code	59.6623.70
Cat.	6
Conductor	Copper
Shielding	UTP
Shielding material	-
Section	23AWG
Conductor diameter	0.57mm
Sheath	PVC
Outer diameter	6mm
Length	305m

CPR class	Eca
Standard	TIA / EIA 568B
Cable type	Rigid
Band	250MHz
Impedance	100Ω
Speed	10/100/1000Mbps
Marking on the cable	every meter
Color	White
Packaging	Box

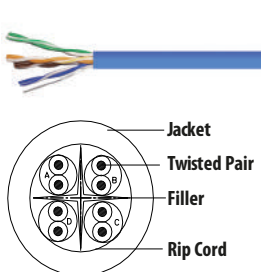
NETWORK CABLE CAT.6 FTP COPPER



Code	59.6623.72
Cat.	6
Conductor	Copper
Shielding	FTP
Shielding material	Aluminum / PE foil with ground wire
Section	23AWG
Conductor diameter	0.57mm
Sheath	PVC
Outer diameter	7.2mm
Length	305m

CPR class	Eca
Standard	TIA / EIA 568B
Cable type	Rigid
Banda	250MHz
Impedance	100Ω
Speed	10/100/1000Mbps
Marking on the cable	every meter
Color	White
Packaging	Box

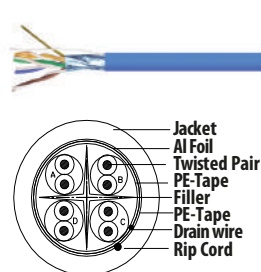
NETWORK CABLE CAT.6 UTP COPPER LSZH



Code	59.6623.85
Cat.	6
Conductor	Copper
Shielding	UTP
Shielding material	-
Section	23AWG
Conductor diameter	0.57mm
Sheath	LSZH
Outer diameter	6.1mm
Length	305m

CPR class	Eca
Standard	TIA / EIA 568B
Cable type	Rigid
Band	250MHz
Impedance	100Ω
Speed	10/100/1000Mbps
Marking on the cable	every meter
Color	Blue
Packaging	Box

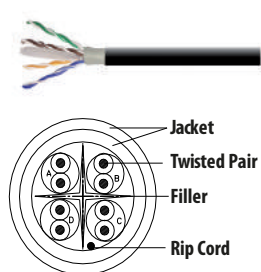
NETWORK CABLE CAT.6 FTP COPPER LSZH



Code	59.6623.86
Cat.	6
Conductor	Copper
Shielding	FTP
Shielding material	Aluminum / PE foil with ground wire
Section	23AWG
Conductor diameter	0.57mm
Sheath	LSZH
Outer diameter	7.2mm
Length	305m

CPR class	Eca
Standard	TIA / EIA 568B
Cable type	Rigid
Band	250MHz
Impedance	100Ω
Speed	10/100/1000Mbps
Marking on the cable	every meter
Color	Blue
Packaging	Box

OUTDOOR NETWORK CABLE CAT.6 UTP COPPER



Code	59.6623.75
Cat.	6
Conductor	Copper
Shielding	UTP
Shielding material	-
Section	23AWG
Conductor diameter	0.57mm
Sheath	PE
Outer diameter	7.1mm
Length	305m

CPR class	Eca
Standard	TIA / EIA 568B
Cable type	Rigid
Band	250MHz
Impedance	100Ω
Speed	10/100/1000Mbps
Marking on the cable	every meter
Color	black
Packaging	Wooden spool

UTP/STP Cable Stripper



Code 49.P063.00
Simple tool for stripping UTP / STP cables. Also suitable as an impact insertion tool.

Impact Terminal Tool For Krone



Code 49.P071.00
Impact inserter for KRONE. It allows the assembly of the network cable into the RJ45 wall or PATCH PANEL sockets. Combi tool, with cable pull function and practical screwdriver.

Pouch Down Tool With 110 Blades



Code 49.P070.70
Impact inserter for LAME 110. It allows the assembly of the network cable into the RJ45 wall or PATCH PANEL sockets. Combi tool, with cable pull function and practical screwdriver.

SWITCH 5 DOORS 10/100



Code	TN.3800.00
Ports	5
Port type	10/100
Interfaces	Base-TX 10/100
POE ports	-
POE power	-
Installation	Desktop
Network standard	IEEE 802.3/3u/3x
Switch type	Unmanaged
Switch capability	1Gbps
Transmission distance	-
Power supply	5V/0.6A Vdc
Material	Plastic
Dimensions	82.0x52.0x22.3mm
Color	White

SWITCH 8 DOORS 10/100



Code	TN.3800.10
Ports	8
Port type	10/100
Interfaces	Base-TX 10/100
POE ports	-
POE power	-
Installation	Desktop
Network standard	IEEE 802.3/3u/3x
Switch type	Unmanaged
Switch capability	1.6Gbps
Transmission distance	-
Power supply	5V/0.6A Vdc
Material	Plastic
Dimensions	124x59x23mm
Color	White

SWITCH 16 PORTS 10/100



Code	TN.3800.20
Ports	16
Port type	10/100
Interfaces	Base-TX 10/100
POE ports	-
POE power	-
Installation	Desktop
Network standard	IEEE 802.3/3u/3x
Switch type	Unmanaged
Switch capability	3.2Gbps
Transmission distance	-
Power supply	9V/0.6A Vdc
Material	Plastic
Dimensions	218x135x42mm
Color	White

METAL SWITCH 5 GIGABIT DOORS



Code	TN.3803.00
Ports	5
Port type	10/100/1000
Interfaces	Base-T 10/100/1000
POE ports	-
POE power	-
Installation	Desktop
Network standard	IEEE 802.3/3u/3x. IEEE 802.3ab
Switch type	Unmanaged
Switch capability	1Gbps
Transmission distance	-
Power supply	5V/0.6A Vdc
Material	Metal
Dimensions	100x64x23mm
Color	black

METAL SWITCH 8 GIGABIT DOORS



Code	TN.3803.10
Ports	8
Port type	10/100/1000
Interfaces	Base-T 10/100/1000
POE ports	-
POE power	-
Installation	Desktop
Network standard	IEEE 802.3/3u/3x. IEEE 802.3ab
Switch type	Unmanaged
Switch capability	16Gbps
Transmission distance	-
Power supply	9V/1A Vdc
Material	Metal
Dimensions	187x107x33mm
Color	black

METAL SWITCH 8 GIGABIT DOORS FOR CCTV



Code	TN.3803.15
Ports	8
Port type	10/100/1000
Interfaces	Base-T 10/100/1000
POE ports	-
POE power	-
Installation	Desktop
Network standard	IEEE 802.3/3u/3x. IEEE 802.3ab
Switch type	Unmanaged
Switch capability	16Gbps
Transmission distance	-
Power supply	9-12Vdc
Material	Metal
Dimensions	140x66.5x25mm
Color	black

SWITCH 16 DOORS GIGABIT DESK / RACK



Code	TN.3803.20
Ports	16
Port type	10/100/1000
Interfaces	Base-T 10/100/1000
POE ports	-
POE power	-
Installation	Rack 13"
Network standard	IEEE 802.3/3u/3x. IEEE 802.3ab
Switch type	Unmanaged
Switch capability	32Gbps
Transmission distance	-
Power supply	100-240Vac
Material	Metal
Dimensions	294x178x44mm
Color	black

SWITCH 24 DOORS GIGABIT DESK / RACK



Code	TN.3803.30
Ports	24
Port type	10/100/1000
Interfaces	Base-T 10/100/1000
POE ports	-
POE power	-
Installation	Rack 13"
Network standard	IEEE 802.3/3u/3x. IEEE 802.3ab
Switch type	Unmanaged
Switch capability	48Gbps
Transmission distance	-
Power supply	100-240Vac
Material	Metal
Dimensions	294x178x44mm
Color	black

SWITCH POE 5 PORTS 10/100 (4 * POE) 38W



Code	TN.3805.00
Ports	5
Port type	10/100
Interfaces	Base-TX 10/100
POE ports	4
POE power	35W
Installation	Desktop
Network standard	IEEE 802.3/3u/3x. IEEE 802.3af/at
Switch type	Poe Unmanaged
Switch capability	1Gbps
Transmission distance	250m
Power supply	48V/0.8A Vdc
Material	Metal
Dimensions	100x100x26mm
Color	black

SWITCH POE 5 PORTS 10/100 (4 * POE) 63W



Code	TN.3805.10
Ports	5
Port type	10/100
Interfaces	Base-TX 10/100
POE ports	4
POE power	58W
Installation	Desktop
Network standard	IEEE 802.3/3u/3x. IEEE 802.3af/at
Switch type	Poe Unmanaged
Switch capability	1Gbps
Transmission distance	250m
Power supply	51V/1.25A Vdc
Material	Metal
Dimensions	100x100x26mm
Color	black

SWITCH POE 9 PORTS 10/100 (8 * POE) 63W



Code	TN.3805.30
Ports	9
Port type	10/100
Interfaces	Base-TX 10/100
POE ports	8
POE power	58W
Installation	Desktop
Network standard	IEEE 802.3/3u/3x. IEEE 802.3af/at
Switch type	Poe Unmanaged
Switch capability	1.8Gbps
Transmission distance	250m
Power supply	51V/1.25A Vdc
Material	Metal
Dimensions	177.5x104x26mm
Color	black

SWITCH POE 9 PORTS 10/100 (8 * POE) 102W



Code	TN.3805.32
Ports	9
Port type	10/100
Interfaces	Base-TX 10/100
POE ports	8
POE power	92W
Installation	Desktop
Network standard	IEEE 802.3/3u/3x. IEEE 802.3af/at
Switch type	Poe Unmanaged
Switch capability	1.8Gbps
Transmission distance	250m
Power supply	51V/1.25A Vdc
Material	Metal
Dimensions	177.5x104x26mm
Color	black

SWITCH POE 6 DOORS 10/100 (4 * POE) 63W



Code	TN.3805.36
Ports	6
Port type	10/100
Interfaces	Base-TX 10/100
POE ports	4
POE power	63W
Installation	Desktop
Network standard	IEEE 802.3/3u/3x. IEEE 802.3af/at
Switch type	Poe Unmanaged
Switch capability	1.2Gbps
Transmission distance	250m
Power supply	51V/1.25A Vdc
Material	Metal
Dimensions	100x100x26mm
Color	black

30W GIGABIT POE INJECTOR



Code	TN.3808.00
Ports	2
Port type	10/100/1000
Interfaces	Base-T 10/100/1000
POE ports	1
POE power	30W
Installation	Desktop
Network standard	IEEE 802.3/3u/3x. IEEE 802.3af/at
Switch type	Iniettore
Switch capability	1Gbps
Transmission distance	-
Power supply	51V/0.8A Vdc
Material	Plastic
Dimensions	131x60x33mm
Color	White

POE INJECTOR 10/100 15W 48V



Code	TN.3808.10
Ports	2
Port type	10/100
Interfaces	Base-TX 10/100
POE ports	1
POE power	15W
Installation	Desktop
Network standard	IEEE 802.3/3u
Switch type	Iniettore
Switch capability	0.1Gbps
Transmission distance	-
Power supply	48V/0.3A Vdc
Material	Plastic
Dimensions	84.5x44x29.8mm
Color	black

POE INJECTOR 10/100 15W 48V



Code	TN.3808.20
Ports	2
Port type	10/100
Interfaces	Base-TX 10/100
POE ports	1
POE power	15W
Installation	Muro
Network standard	IEEE 802.3/3u
Switch type	Iniettore
Switch capability	0.1Gbps
Transmission distance	-
Power supply	48V/0.3A Vdc
Material	Plastic
Dimensions	82.7x46.8x40.3mm
Color	black

MULTI SPECTRUM 10BIT



Professional multi spectrum 10bit instrument for terrestrial, satellite signals including dCSS, cable, CCTV camera pointing including AHD and LAN network test.

Code	JL 43986
Display	5" TFT LCD True-Color FULL HD
Functions	H.265 HEVC 10 bit, dCSS, unicable SCR, real-time spectrum, camera control and LAN test
Quick signal search	Yes
Acoustic signal	Adjustable according to the signal level
Measurements	CBER - VBER - MER - C/N
AV Output/Input	Jack da 3,5mm, RCA, Yprpb
HD Output	Yes
Video decompression	H.265 HEVC 10bit, AVC, AVS+, AVC/H.264, MPEG-2, MPEG-4 Part 2, Div X, X vide, MPEG-1/h.261/h.263, AVS
Video resolution	HD 2160p, HD 1080p, 1080i, 720p, 576p and 576i
Video format	4:3, 16:9, by pan & scan and letter box
Audio decompression	DD/DD+, AAC/AACHE, WMA/WMApro, MPEG I Layer 1, 2, MP3 and 3D SRS
Programmable satellites	250

Programmable transponders	6500
Programmable channels	10.000 (TV and Radio)
Short circuit protection	Yes
Update	Via USB 2.0
CPU	751 Mhz
SDRAM	512 MB DDR3
FLASH memory	1MB SPI + 128MB Nand
Battery	Li-oN 11,1V/2600mAh
House Power supply	Input: 100-240Vac 50/60Hz - Output: 14Vdc/1,5A
Automobile Power supply	Input: 12Vdc Output: 12Vdc/3,0A
Consumption	25W max
LED light	Yes
Dimensions	21 x 13 x 4,8 cm
Weight	0,75 Kg
DVB-S/DVB-S2 (satellite)	950 MHz ~ 2150 MHz dCSS, SCR Unicable, Universal
DVB-T/DVB-T2 (terrestrial)	VHF-UHF 48 MHz ~ 862 MHz
DVB-C	110 MHz ~ 862 MHz
LAN	RJ45
WiFi	Yes

LAN CABLE LENGTH ANALYZER WITH PROBE



Code	49.P010.30
<p>MT-7071K includes 8 + 1 remote units, allows you to measure cable length up to 1200M, identify and check the condition of the cable to resolve any wiring problems. Ideal for all fields of telecommunications installation and maintenance, networking, datacom, audio / video, cable TV and all weather cabling, etc.</p> <p>- Power supply: 9V</p> <p>- Accessories included: RJ45 patch cable, RJ11 / 12 patch cable, Alligator test cable, Earphones, Kangaroo bag.</p>	

LAN CABLE TESTER WITH TONE GENERATOR



Code	49.P010.40
<p>Allows you to trace the cable easily and quickly. Easily identify telephone line polarity and detect status such as open lines, off-hook condition or incoming call ringing. PoE switches and STP cable traceability up to 3km. Ideal for tracing active Ethernet cables and STP cables and determining network continuity. Cable mapping and status indication up to 300m. Fast / slow scan function. Displays the result of the pin-to-pin cable mapping. View cable status to troubleshoot any cabling problems.</p> <p>- Power supply: 9V</p> <p>- Accessories included: RJ45 patch cable, RJ11 / 12 patch cable, Alligator test cable, Earphones, Kangaroo bag.</p>	

TESTER FOR POE AND LAN CABLES



Code	49.P010.55
<p>Easily test your Ethernet network for the existence of Power over Ethernet. Quickly detects the type of power supply equipment (endspan or midspan). Check the RJ11 / RJ12 / RJ45 pin-to-pin cable map. Automatically performs all tests and checks for wire pairs such as continuity, breaks, shorts. Cable mapping up to 300M</p> <p>- Power supply: 9V</p>	

CAT 5E AND 6 RJ45 NETWORK TESTER



Code **59.6622.50**

Check the RJ11 / RJ12 / RJ45 pin-to-pin cable map. Automatically performs all tests and checks for wire pairs such as continuity, breaks, shorts.
Possibility of manual or automatic scanning.
- Power supply: 9V

NETWORK TESTER RJ45 USB BNC



Code **59.6622.55**

Tester for testing 4 types of cables:
UTP and STP LAN cables, terminated with RJ-45 male connectors (EIA / TIA 568).
RJ-11 cables with male connectors, 2 to 6 conductors installed.
USB cables with flat type A plug on one end and square type B plug on the other end.
BNC cables with male connectors.
Faults indicated: no connection, short circuit, open and reverse.
Low Battery Indicator: The LED lights up to indicate that the battery is low.
- Power supply: 9V

3-5 / 6 DIGITAL MULTIMETER



Code **49.P011.16**

The True RMS intelligent digital multimeter is a portable digital multimeter with high reliability and portability; a perfect tool for the professional.
One touch to take measurement.
Large display with backlight and integrated LED flashlight.
NCV Non-Contact Voltage Detection: As you move the non-contact voltage sensor to the conductor, the meter beeps and flashes with frequency based on the strength of the AC voltage.
It can measure AC / dc voltage, AC / dc current, resistance, diode, capacitance, frequency, duty ratio, temperature, continuity, NCV.
TRUE RMS function.

CRIMPING MACHINE FOR COAXIAL CONNECTORS



Code **49.P052.70**

Made of AISI4140 steel, black oxide finish for corrosion resistance and durability.
To accurately crimp cable connectors:
- RG: 55, 58, 59, 5, 6, 21, 141, 142, 143, 210, 212, 222, 223, 303, 304, 400
- Belden: 8279, 8281, 9231, 9141

PROFESSIONAL CRIMPING TOOL FOR MODULAR CONNECTORS



Code **49.P053.55**

For crimping modular plugs in parallel action.
10P10C, 8P8C / RJ45, 6P6C / RJ12, 6P4C / RJ11, 4P4C & 4P2C / RJ22 plugs, and RJ11 / 6P6C.
- Smooth ratchet mechanism ensures effective connections.
- Integrated with wire stripper for round cables.
- Central carbon steel frame, black oxide finish and hardened.
- Lightweight, strong and compact.

CRIMPING MACHINE FOR MODULAR CONNECTORS 4/6/8



Code **49.P053.85**

To crimp modular plugs:
8P8C / RJ45, 6P6C / RJ12, 6P4C / RJ11, 4P4C & 4P2C / RJ22 plugs, and RJ11 / 6P6C.

- Integrated with wire strippers for round cables.
- Central carbon steel frame, black oxide finish and hardened.

PLASTIC CRIMPING PLIERS FOR MODULAR PLUGS



Code **49.P054.22**

Ideal for crimping modular plugs with feed-through technology such as:
8P8C / RJ45, 6P6C / RJ12, 6P4C / RJ11.

- Accurate: Parallel action crimping performance is accurate.
- Convenient: High lever ratchet design for consistent and repeatable crimping.
- Comfortable: Ergonomically shaped non-slip handle for comfortable use in all conditions.
- 3in1: Cut, strip and crimp in one design for quick wiring installation.

MINI UPS 5V 2A



Code	59.6317.00
Power output	5VA
Output voltage	5 Vdc
Real power	10W
Output sockets	dc 3.5x1.35mm
Cabinet	Plastic
Technology	Offline
Performance	-
Output wave format	Simulated sinusoidal
Battery type	Li-Ion 18650
Battery capacity	1x2000 mAh
Autonomy	3 ore
Manageable from PC	No

Alarms	Visivo
Intervention time	2-6 ms
Overvoltage protection	Yes
AVR (Automatic Voltage Regulator)	No
Input voltage	100-240Vac
Noise level	<45
Operating temperature	-0°C ~ 50°C
Dimensions	100x50x68mm
Color	black
Weight	0.152Kg.

MINI UPS 9V 1A



Code	59.6317.30
Power output	9VA
Output voltage	9 Vdc
Real power	9W
Output sockets	dc 5.5x2.5mm
Cabinet	Plastic
Technology	Offline
Performance	-
Output wave format	Simulated sinusoidal
Battery type	Li-Ion 18650
Battery capacity	2x2000 mAh
Autonomy	10 ore
Manageable from PC	No

Alarms	Visivo
Intervention time	2-6 ms
Overvoltage protection	Yes
AVR (Automatic Voltage Regulator)	No
Input voltage	100-240Vac
Noise level	<45
Operating temperature	-0°C ~ 50°C
Dimensions	102x65x30mm
Color	White
Weight	0.200Kg.

MINI UPS 12V 2A



Code	59.6317.50
Power output	24VA
Output voltage	12 Vdc
Real power	24W
Output sockets	dc 5.5x2.5mm
Cabinet	Plastic
Technology	Offline
Performance	-
Output wave format	Simulated sinusoidal
Battery type	Li-Ion 18650
Battery capacity	3x2000 mAh
Autonomy	10 ore
Manageable from PC	No

Alarms	Visivo
Intervention time	2-6 ms
Overvoltage protection	Yes
AVR (Automatic Voltage Regulator)	No
Input voltage	100-240Vac
Noise level	<45
Operating temperature	-0°C ~ 50°C
Dimensions	102x65x30mm
Color	White
Weight	0.250Kg.

LEAD BATTERY 12V 1.3Ah SKB



Code	38.6401.25
Voltage	12V
Capacity	1.3Ah
Power	4W/cell - 15 min (1.67V/cell)
Terminals	faston 4.8 mm
Dimensions (WxDxH)	98 x 45 x 50mm
Dimensions with terminal (LxWxH-HT)	98x45x50-58mm
Weight	0.60Kg

Number of cells	6
Buffer charging voltage	13,5 - 13,8V
Charging voltage for cyclic use	14,4 - 15,0V
Standard charging current	0.36A
Max Discharge Current (5 sec.)	19A
Discharge temperature	-10° - 60°C
Charging temperature	-20° - 60°C
Storage temperature	-20° - 60°C

LEAD BATTERY 12V 2.3Ah SKB



Code	38.6402.05
Voltage	12V
Capacity	2.3Ah
Power	8W/cell - 15 min (1.67V/cell)
Terminals	faston 4.8 mm
Dimensions (WxDxH)	178 x 34 x 60mm
Dimensions with terminal (LxWxH-HT)	178x34x60-67mm
Weight	0.86Kg

Number of cells	6
Buffer charging voltage	13,5 - 13,8V
Charging voltage for cyclic use	14,4 - 15,0V
Standard charging current	0.69A
Max Discharge Current (5 sec.)	24A
Discharge temperature	-10° - 60°C
Charging temperature	-20° - 60°C
Storage temperature	-20° - 60°C

LEAD BATTERY 12V 7.2Ah SKB



Code	38.6407.04
Voltage	12V
Capacity	7.2Ah
Power	25W/cell - 15 min (1.67V/cell)
Terminals	faston 4.8 mm
Dimensions (WxDxH)	151 x 65 x 95mm
Dimensions with terminal (LxWxH-HT)	151x65x95-101mm
Weight	2.00Kg

Number of cells	6
Buffer charging voltage	13,5 - 13,8V
Charging voltage for cyclic use	14,4 - 15,0V
Standard charging current	2.16A
Max Discharge Current (5 sec.)	108A
Discharge temperature	-10° - 60°C
Charging temperature	-20° - 60°C
Storage temperature	-20° - 60°C

LEAD BATTERY 12V 12Ah SKB



Code	38.6412.05
Voltage	12V
Capacity	12Ah
Power	45W/cell - 15 min (1.67V/cell)
Terminals	faston 6.3 mm
Dimensions (WxDxH)	151 x 98 x 95mm
Dimensions with terminal (LxWxH-HT)	151x98x95-101mm
Weight	3.55Kg

Number of cells	6
Buffer charging voltage	13,5 - 13,8V
Charging voltage for cyclic use	14,4 - 15,0V
Standard charging current	3.60A
Max Discharge Current (5 sec.)	180A
Discharge temperature	-10° - 60°C
Charging temperature	-20° - 60°C
Storage temperature	-20° - 60°C

UPS uninterruptible power supply 600VA



Code	59.6300.57
Power output	600VA
Output voltage	220 Vac
Real power	360W
Output sockets	2x Schuko
Cabinet	Plastic
Technology	Offline
Performance	0.6Cosfi
Output wave format	Simulated sinusoidal
Battery	lead
Battery capacity	12V/7Ah
Autonomy	3->20 minuti
Manageable from PC	No

Alarms	Visual and acoustic
Intervention time	2-6 ms
Overvoltage protection	Yes
AVR (Automatic Voltage Regulator)	±10%
Input voltage	145-290Vac
Noise level	<45
Operating temperature	-0°C ~ 50°C
Dimensions	314x97x143mm
Color	black
Weight	4.9Kg

UPS uninterruptible power supply 800VA



Code	59.6300.67
Power output	800VA
Output voltage	220 Vac
Real power	480W
Output sockets	1x Schuko + 2x IEC
Cabinet	Metal
Technology	Offline
Performance	0.6Cosfi
Output wave format	Simulated sinusoidal
Battery	lead
Battery capacity	12V/9Ah
Autonomy	3->20 minuti
Manageable from PC	Yes

Alarms	Visual and acoustic
Intervention time	2-6 ms
Overvoltage protection	Yes
AVR (Automatic Voltage Regulator)	±10%
Input voltage	145-290Vac
Noise level	<45
Operating temperature	-0°C ~ 50°C
Dimensions	324x100x153mm
Color	black
Weight	5.8Kg

UPS 1200VA UPS



Code	59.6300.72
Power output	1200VA
Output voltage	220 Vac
Real power	720W
Output sockets	2x Schuko + 2x IEC
Cabinet	Metal
Technology	Offline
Performance	0.6Cosfi
Output wave format	Simulated sinusoidal
Battery	lead
Battery capacity	2x 12V/9Ah
Autonomy	5->30 minuti
Manageable from PC	Yes

Alarms	Visual and acoustic
Intervention time	2-6 ms
Overvoltage protection	Yes
AVR (Automatic Voltage Regulator)	±10%
Input voltage	145-290Vac
Noise level	<45
Operating temperature	-0°C ~ 50°C
Dimensions	350x120x188mm
Color	black
Weight	12.6Kg.

BATTERIES & POWER








MONITOR

17" LCD MONITOR FOR VIDEO SURVEILLANCE



Code	67.3910.26
Inches	17
Resolution	1280x1024pixel
Format	5:4
Video inputs	HDMI/VGA/BNC
Outputs	BNC/RCA
Audio	RCA + Jack 3.5mm
Vesa	100x100
Color	black
Dimensions	371.5x183x380mm
Weight	2.6kg
Energy Rating	A

19" LCD MONITOR FOR VIDEO SURVEILLANCE



Code	67.3910.31
Inches	19
Resolution	1280x1024pixel
Format	5:4
Video inputs	HDMI/VGA/BNC
Outputs	BNC/RCA
Audio	RCA + Jack 3.5mm
Vesa	100x100
Color	black
Dimensions	411x183x410mm
Weight	2.9kg
Energy Rating	A

RACK

19" WALL RACK CABINET FOR DVR



Code	59.6322.40
Format	19"
Unit	2
Porta	steel
Material	steel
Maximum load	60Kg
Dimensions	600x750x150mm
Color	black
Weight	19Kg

19" WALL RACK CABINET 6 UNITS



Code	59.6322.00
Format	19"
Unit	6
Porta	Glass
Material	steel
Maximum load	60Kg
Dimensions	600x450x370mm
Color	black
Weight	15Kg

19" WALL RACK CABINET 9 UNITS



Code	59.6322.05
Format	19"
Unit	9
Porta	Glass
Material	steel
Maximum load	60Kg
Dimensions	600x450x500mm
Color	black
Weight	19Kg

PATCH PANEL EMPTY 19" 1U 24 SOCKETS CAT.6A



Code	59.6323.30
Ports	24

1 UNIT FIXED SHELF FOR RACK CABINETS 30CM



Code	59.6323.20
Dimensions	445x300mm

1 UNIT FIXED SHELF FOR RACK CABINETS 40CM



Code	59.6323.25
Dimensions	445x400mm

CABLE GUIDE PANEL 19" 1U IN PLASTIC 4 RINGS



Code	59.6323.10
Dimensions	19" 1U
Number of rings	4
Material	Plastic

SCREWS KIT FOR RACK PACKAGE 20 PIECES

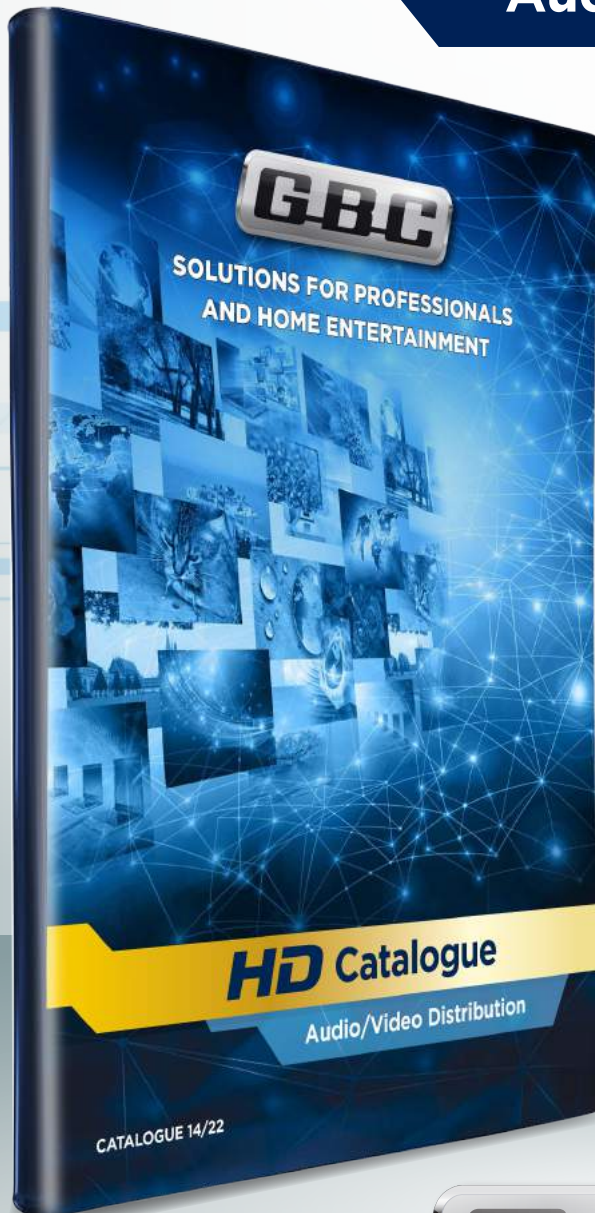


Code	59.6323.00
Number of pieces	20
Material	Stainless steel



Catalog **HD** 2022

Audio/Video Distribution



- HDMI Extenders
- HDMI Wireless Extenders
- HDMI Extenders on Optical Fiber
- HDMI Switch
- HDMI Switch/Splitter
- HDMI Splitter
- HDMI Matrix
- Audio / Video Converters
- HDMI Cables
- HDMI Adapters
- Toslink Optical Audio Cables
- VGA Cables
- RCA/SCART Cables
- Coaxial Cables
- RJ45 Cables
- Optical Fiber Cables



WATCH ANY WHERE DOUBLE - DVB-T audio/video modulator, with HD port



Code	JL41985
Modulation type	DVB-T Standard
Modulation	QPSK/16QAM/64QAM
Band width	6/7/8 MHz
Carrier	2K/8K
Guard space	1/4, 1/8, 1/16, 1/32
Code rate	1/2, 2/3, 3/4, 5/6, 7/8
MER	35 dB
Frequency range	50 - 860 MHz
Output level	70 - 100 dBuV
Output impedance	75 Ohm
Audio bitrate	64K, 128K, 192K, 256K, 320K
Video input format	HD Port
Video bitrate	1M ~ 20M
Video encoding format	H. 264

Video resolution	1920x1080 @60p, 1920x1080 @50p, 1920x1080 @60i, 1920x1080 @50i, 1280x720 @60p, 1280x720 @50p
Video connector	HD 1.3
Power supply	12Vcc/1,5A
Dimensions	125 mm x 100 mm x 28 mm
Weight	0,5 Kg
TSID e SID	0 ~ 65535
LCN	0 ~ 1023
Other	Double HDMI port in order to connect TV sets directly

HDMI 1080P 60M EXTENDER ON ETHERNET CABLE WITH LOOPOUT AND IR



Code	14.2810.40
Type	HDMI
Technology (e.g. TCP-IP)	Point To Point
Max resolution	1080p
Max distance	60m
Connection type	RJ45 Cat.6
IR repeater	Yes
Loop-Out	Yes
Inputs	1 x HDMI
Outputs	1 x HDMI
HDR support	No
EDID support	No
HdcP support	1.3
Additional functions	POC

Band	6.75Gbps
Deep color	24bit
Color space	4:2:2 YUV
Audio	LPCM, DTS Digital, Dolby Digital
Max input cable length	7m
Max output cable length	7m
Power supply	5V 1A POC
Material	Plastic
TX dimensions	81x62x26mm
RX dimensions	81x48x26mm
Color	black
Weight	2 x 37g

HDMI 4K @ 30HZ 120M CASCADE EXTENDER ON ETHERNET CABLE WITH LOOPOUT AND IR



Code	14.2800.59
Type	HDMI
Technology (e.g. TCP-IP)	One To Many
Max resolution	4K@30Hz
Max distance	100m
Connection type	RJ45 Cat.6
IR repeater	Yes
Loop-Out	Yes
Inputs	1 x HDMI
Outputs	1 x HDMI
HDR support	No
EDID support	No
HdcP support	1.4
Additional functions	Cascade / BI-DIRECTIONAL

Band	10.2Gbps
Deep color	36bit
Color space	4:2:2 YUV
Audio	LPCM, DTS Digital, Dolby Digital
Max input cable length	5m
Max output cable length	5m
Power supply	5V 1A
Material	Metal
TX dimensions	94x84x24mm
RX dimensions	94x84x24mm
Color	black
Weight	2 x 223g

ADDITIONAL RECEIVER FOR 14280059



Code	14.2800.59/R
Type	HDMI
Technology (e.g. TCP-IP)	One To Many
Max resolution	4K@30Hz
Max distance	100m
Connection type	RJ45 Cat.6
IR repeater	Yes
Loop-Out	Yes
Inputs	1 x HDMI
Outputs	1 x HDMI
HDR support	No
EDID support	No
HdcP support	1.4
Additional functions	Cascade / BI-DIRECTIONAL

Band	10.2Gbps
Deep color	36bit
Color space	4:2:2 YUV
Audio	LPCM, DTS Digital, Dolby Digital
Max input cable length	5m
Max output cable length	5m
Power supply	5V 1A
Material	Metal
TX dimensions	94x84x24mm
RX dimensions	94x84x24mm
Color	black
Weight	223g

HDMI 1080P IP 150m KVM EXTENDER ON ETHERNET CABLE WITH LOOPOUT AND IR



Code	14.2800.62		
Type	KVM	Band	6.75Gbps
Technology (e.g. TCP-IP)	Multi Point IP	Deep color	24bit
Max resolution	1080p	Color space	4:2:2 YUV
Max distance	150m	Audio	LPCM
Connection type	RJ45 Cat.6	Max input cable length	3m
IR repeater	Yes	Max output cable length	3m
Loop-Out	Yes	Power supply	5V 1A
Inputs	1 x HDMI / 1x USB "B"	Material	Metal
Outputs	1 x HDMI / 2 x USB "A" 1.1	TX dimensions	110x89,5x26mm
HDR support	No	RX dimensions	170x81,5x22mm
EDID support	No	Color	black
HdcP support	1.3	Weight	2 x 274g
Additional functions	KVM		

ADDITIONAL RECEIVER FOR 14280062 KVM HDMI 1080P IP ON ETHERNET CABLE



Code	14.2800.63		
Type	KVM	Band	6.75Gbps
Technology (e.g. TCP-IP)	Multi Point IP	Deep color	24bit
Max resolution	1080p	Color space	4:2:2 YUV
Max distance	150m	Audio	LPCM
Connection type	RJ45 Cat.6	Max input cable length	3m
IR repeater	Yes	Max output cable length	3m
Loop-Out	Yes	Power supply	5V 1A
Inputs	1 x HDMI	Material	Metal
Outputs	1 x HDMI / 2 x USB "A" 1.1	TX dimensions	-mm
HDR support	No	RX dimensions	170x81,5x22mm
EDID support	No	Color	black
HdcP support	1.3	Weight	274g
Additional functions	KVM		

HDMI 1080P 50M KVM EXTENDER ON ETHERNET CABLE WITH LOOPOUT AND IR



Code	14.2800.64		
Type	KVM	Band	6.75Gbps
Technology (e.g. TCP-IP)	Point To Point	Deep color	24bit
Max resolution	1080p	Color space	4:2:2 YUV
Max distance	50m	Audio	LPCM, DTS Digital, Dolby Digital
Connection type	RJ45 Cat.6	Max input cable length	5m
IR repeater	Yes	Max output cable length	5m
Loop-Out	Yes	Power supply	5V 1A POC
Inputs	1 x HDMI / 1x USB "B"	Material	Metal
Outputs	1 x HDMI / 2 x USB "A" 2.0	TX dimensions	145x69x25mm
HDR support	No	RX dimensions	145x69x25mm
EDID support	No	Color	black
HdcP support	1.3	Weight	2 x 245g
Additional functions	KVM - HDMI LoopOut		

4K @ 60HZ 60M HDMI KVM EXTENDER ON ETHERNET CABLE WITH LOOPOUT AND IR



Code	14.2813.62		
Type	KVM	Band	18Gbps
Technology (e.g. TCP-IP)	Point To Point	Deep color	24bit
Max resolution	4K@60Hz	Color space	4:4:4 YUV
Max distance	60m	Audio	LPCM, DTS Digital, Dolby Digital
Connection type	RJ45 Cat.6	Max input cable length	3m
IR repeater	Yes	Max output cable length	3m
Loop-Out	Yes	Power supply	5V 1A
Inputs	1 x HDMI / 1x USB "A"	Material	Metal
Outputs	1 x HDMI / 2 x USB "A" 1.1	TX dimensions	107x105x27mm
HDR support	Yes	RX dimensions	107x105x27mm
EDID support	No	Color	black
HdcP support	2.2	Weight	2 x 499g
Additional functions	KVM - 3.5mm audio output		

4K @ 30HZ HDMI SPLITTER



Code	14.2810.17
Inputs	1
Outputs	2
Max resolution	4K@30Hz
HDR support	No
Downscaling	No
Mode	Smart
Band	10.2Gbps
Deep color	36bit
EDID support	No
Hdcp support	1.3
CEC support	No
Additional functions	
Audio	LPCM, DTS Digital, Dolby Digital

Max input cable length	5m
Max output cable length	5m
Remote control	No
Power supply	No
Material	Metal
Dimensions	75x38x15mm
Color	black
Weight	160g

4K @ 30HZ HDMI SPLITTER



Code	14.2810.18
Inputs	1
Outputs	4
Max resolution	4K@30Hz
HDR support	No
Downscaling	No
Mode	Smart
Band	10.2Gbps
Deep color	36bit
EDID support	No
Hdcp support	1.3
CEC support	No
Additional functions	
Audio	LPCM, DTS Digital, Dolby Digital

Max input cable length	5m
Max output cable length	5m
Remote control	No
Power supply	5V 1A
Material	Metal
Dimensions	165x79x25mm
Color	black
Weight	210g

VGA TO HDMI CONVERTER WITH AUDIO



Code	14.2800.96
Input	VGA + Audio
	3,5mm
Output	HDMI
Max in Resolution	1920 x 1080 pixel
Max out Resolution	1080p@60Hz
Band	6.75 Gbps
Supported technologies	Audio LPCM, Hdcp 1.3
Power supply	5V USB
Material	Plastic
Color	black
Dimensions	50x40x11mm
Weight	90g

CONVERTER FROM HDMI TO VGA WITH AUDIO



Code	14.2800.08
Input	HDMI
Output	VGA + Audio
	3,5mm
Max in Resolution	1080p@60Hz
Max out Resolution	1920 x 1080 pixel
Band	6.75 Gbps
Supported technologies	Audio LPCM, Hdcp 1.3
Power supply	5V USB
Material	Plastic
Color	black
Dimensions	46x23x15mm
Weight	45g

CONVERTER FROM HDMI TO AV / RCA



Code	14.2810.56
Input	HDMI
Output	AV/RCA
Max in Resolution	1080p@60Hz
Max out Resolution	800 x 600 pixel
Band	6.75 Gbps
Supported technologies	Downscaling 576i - 480p / Hdcp 1.3
Power supply	5V USB (non incl.)
Material	Plastic
Color	black
Dimensions	60x56x21mm
Weight	45g

AV / RCA TO HDMI CONVERTER WITH SCALER



Code	14.2800.91
Input	AV/RCA
Output	HDMI
Max in Resolution	800 x 600 pixel
Max out Resolution	1080p@60Hz
Band	6.75 Gbps
Supported technologies	Scaler 720p - 1080p / Hdcp 1.3
Power supply	5V USB (non incl.)
Material	Plastic
Color	black
Dimensions	60x56x21mm
Weight	45g

4K HIGH SPEED WITH ETHERNET HDMI CABLE



Code	14.2851.94
Definition	4K@60Hz
Length	0.5m
Max resolution	4096x2160pixel
Band	18Gbps
Connectors	Spina HDMI - Spina HDMI

Cable diameter	6.0mm
AWG	30
HdcP	2.2
Color space	YUV 4:4:4
Body Connectors Material	Plastic

4K HIGH SPEED WITH ETHERNET HDMI CABLE



Code	14.2851.96
Definition	4K@60Hz
Length	1m
Max resolution	4096x2160pixel
Band	18Gbps
Connectors	Spina HDMI - Spina HDMI

Cable diameter	6.0mm
AWG	30
HdcP	2.2
Color space	YUV 4:4:4
Body Connectors Material	Plastic

4K HIGH SPEED WITH ETHERNET HDMI CABLE



Code	14.2851.99
Definition	4K@60Hz
Length	1.5m
Max resolution	4096x2160pixel
Band	18Gbps
Connectors	Spina HDMI - Spina HDMI

Cable diameter	6.0mm
AWG	30
HdcP	2.2
Color space	YUV 4:4:4
Body Connectors Material	Plastic

4K HIGH SPEED WITH ETHERNET HDMI CABLE



Code	14.2852.01
Definition	4K@60Hz
Length	2m
Max resolution	4096x2160pixel
Band	18Gbps
Connectors	Spina HDMI - Spina HDMI

Cable diameter	6.0mm
AWG	30
HdcP	2.2
Color space	YUV 4:4:4
Body Connectors Material	Plastic

4K HIGH SPEED WITH ETHERNET HDMI CABLE



Code	14.2852.04
Definition	4K@60Hz
Length	3m
Max resolution	4096x2160pixel
Band	18Gbps
Connectors	Spina HDMI - Spina HDMI

Cable diameter	6.0mm
AWG	30
HdcP	2.2
Color space	YUV 4:4:4
Body Connectors Material	Plastic

4K HIGH SPEED WITH ETHERNET HDMI CABLE



Code	14.2852.06
Definition	4K@60Hz
Length	5m
Max resolution	4096x2160pixel
Band	18Gbps
Connectors	Spina HDMI - Spina HDMI

Cable diameter	6.0mm
AWG	30
HdcP	2.2
Color space	YUV 4:4:4
Body Connectors Material	Plastic

4K HIGH SPEED WITH ETHERNET HDMI CABLE



Code	14.2852.10
Definition	4K@60Hz
Length	10m
Max resolution	4096x2160pixel
Band	10.2Gbps
Connectors	Spina HDMI - Spina HDMI

Cable diameter	6.0mm
AWG	30
HdcP	2.2
Color space	YUV 4:2:0
Body Connectors Material	Plastic

4K HIGH SPEED WITH ETHERNET HDMI CABLE



Code	14.2852.15
Definition	4K@60Hz
Length	15m
Max resolution	4096x2160pixel
Band	10.2Gbps
Connectors	Spina HDMI - Spina HDMI

Cable diameter	8.0mm
AWG	26
HdcP	2.2
Color space	YUV 4:2:0
Body Connectors Material	Plastic

4K HIGH SPEED WITH ETHERNET HDMI CABLE

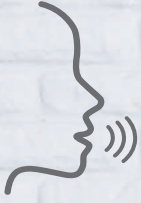


Code	14.2852.80
Definition	4K@60Hz
Length	20m
Max resolution	4096x2160pixel
Band	10.2Gbps
Connectors	Spina HDMI - Spina HDMI

Cable diameter	9.0mm
AWG	24
HdcP	2.2
Color space	YUV 4:2:0
Body Connectors Material	Aluminum

HeySmart

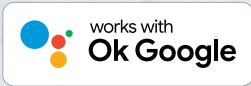
THE HOUSE OF TOMORROW ... TODAY



**VOICE
CONTROL**



**SMART
CONTROL**



DISCOVER THE COMPLETE LINE OF HEYSMART PRODUCTS TO CONTROL YOUR HOME FROM REMOTE IN AN EFFICIENT AND INNOVATIVE WAY, **OUR PRODUCT LINES MEET EVERY NEED MAKING IT SMART!**



 LIGHTING



 AUTOMATION



 AIR



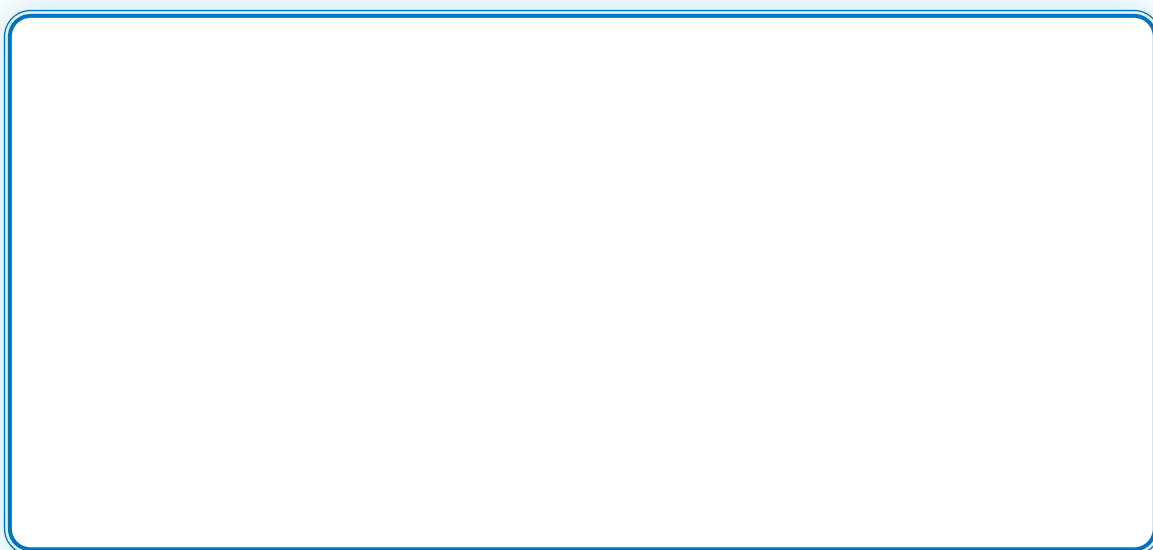
 SECURITY





gbconline.it - [find us on facebook](#)

DEALER STAMP



Copyright Kon.El.Co. 2022. All rights reserved. All brands and product names mentioned are trademarked or registered trademarks of their respective companies. Le foto sono solo rappresentative. Le caratteristiche tecniche e/o estetiche dei prodotti possono subire variazioni senza alcun preavviso. Tutti i marchi rappresentati sono di proprietà dei rispettivi proprietari.



Kon.El.Co. S.p.A. Piazza Don Mapelli, 75 - 20099 - Sesto San Giovanni - Milano - ITALY